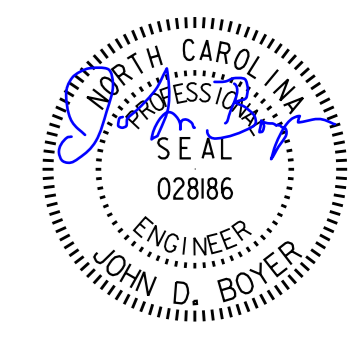
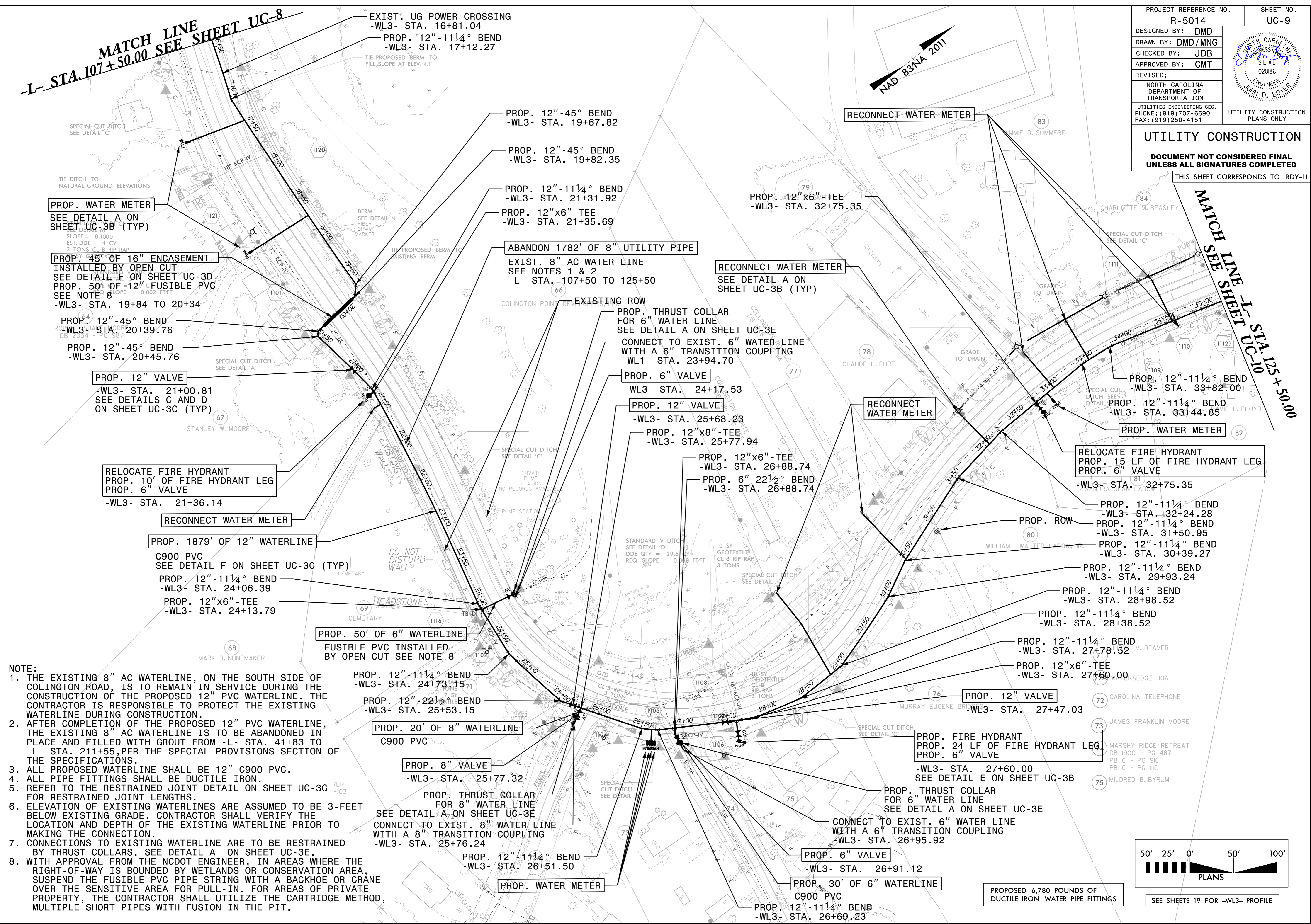


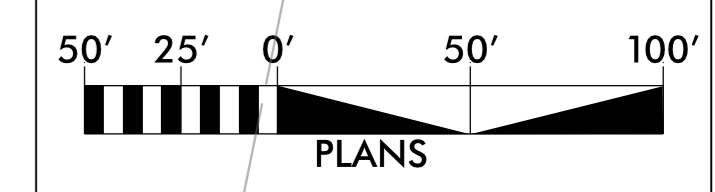
8/17/99

MATCH LINE
-L- STA. 107+50.00 SEE SHEET UC-8

PROJECT REFERENCE NO.	SHEET NO.
R-5014	UC-9
DESIGNED BY: DMD	
DRAWN BY: DMD/MNG	
CHECKED BY: JDB	
APPROVED BY: CMT	
REVISED:	UTILITY CONSTRUCTION PLANS ONLY
NORTH CAROLINA DEPARTMENT OF TRANSPORTATION UTILITIES ENGINEERING SEC. PHONE: (919) 707-6690 FAX: (919) 250-4151	
UTILITY CONSTRUCTION	
DOCUMENT NOT CONSIDERED FINAL UNLESS ALL SIGNATURES COMPLETED	
THIS SHEET CORRESPONDS TO RDY-11	



- NOTE:**
1. THE EXISTING 8" AC WATERLINE, ON THE SOUTH SIDE OF COLINGTON ROAD, IS TO REMAIN IN SERVICE DURING THE CONSTRUCTION OF THE PROPOSED 12" PVC WATERLINE. THE CONTRACTOR IS RESPONSIBLE TO PROTECT THE EXISTING WATERLINE DURING CONSTRUCTION.
 2. AFTER COMPLETION OF THE PROPOSED 12" PVC WATERLINE, THE EXISTING 8" AC WATERLINE IS TO BE ABANDONED IN PLACE AND FILLED WITH GROUT FROM -L- STA. 41+83 TO -L- STA. 211+55, PER THE SPECIAL PROVISIONS SECTION OF THE SPECIFICATIONS.
 3. ALL PROPOSED WATERLINE SHALL BE 12" C900 PVC.
 4. ALL PIPE FITTINGS SHALL BE DUCTILE IRON.
 5. REFER TO THE RESTRAINED JOINT DETAIL ON SHEET UC-3G FOR RESTRAINED JOINT LENGTHS.
 6. ELEVATION OF EXISTING WATERLINES ARE ASSUMED TO BE 3- FEET BELOW EXISTING GRADE. CONTRACTOR SHALL VERIFY THE LOCATION AND DEPTH OF THE EXISTING WATERLINE PRIOR TO MAKING THE CONNECTION.
 7. CONNECTIONS TO EXISTING WATERLINE ARE TO BE RESTRAINED BY THRUST COLLARS. SEE DETAIL A ON SHEET UC-3E.
 8. WITH APPROVAL FROM THE NCDOT ENGINEER, IN AREAS WHERE THE RIGHT-OF-WAY IS BOUNDED BY WETLANDS OR CONSERVATION AREA, SUSPEND THE FUSIBLE PVC PIPE STRING WITH A BACKHOE OR CRANE OVER THE SENSITIVE AREA FOR PULL-IN. FOR AREAS OF PRIVATE PROPERTY, THE CONTRACTOR SHALL UTILIZE THE CARTRIDGE METHOD, MULTIPLE SHORT PIPES WITH FUSION IN THE PIT.



PROPOSED 6,780 POUNDS OF DUCTILE IRON WATER PIPE FITTINGS

SEE SHEETS 19 FOR -WL3- PROFILE

REVISIONS