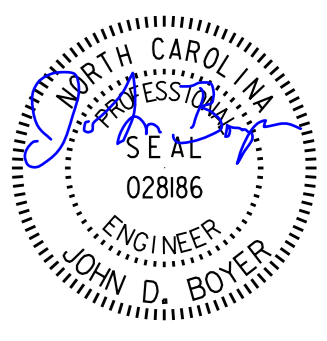
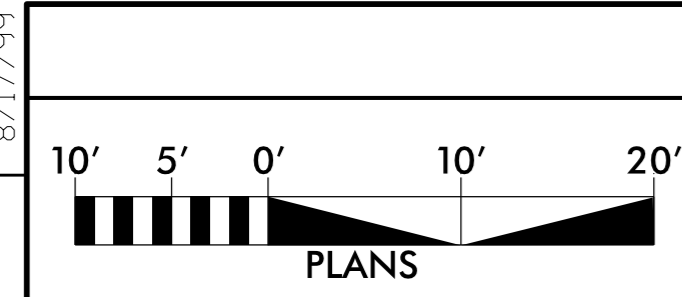


PROJECT REFERENCE NO.	SHEET NO.
R-5014	UC-7
DESIGNED BY: DMD	
DRAWN BY: DMD/MNG	
CHECKED BY: JDB	
APPROVED BY: CMT	
REVISED:	UTILITY CONSTRUCTION PLANS ONLY
NORTH CAROLINA DEPARTMENT OF TRANSPORTATION	
UTILITIES ENGINEERING SEC. PHONE: (919) 707-6690 FAX: (919) 250-4151	

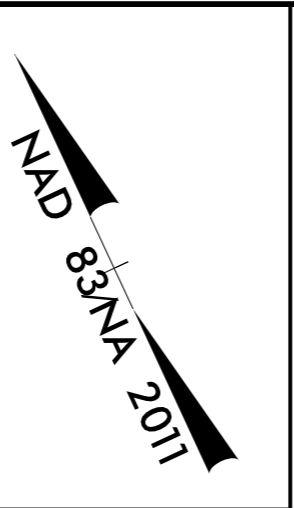
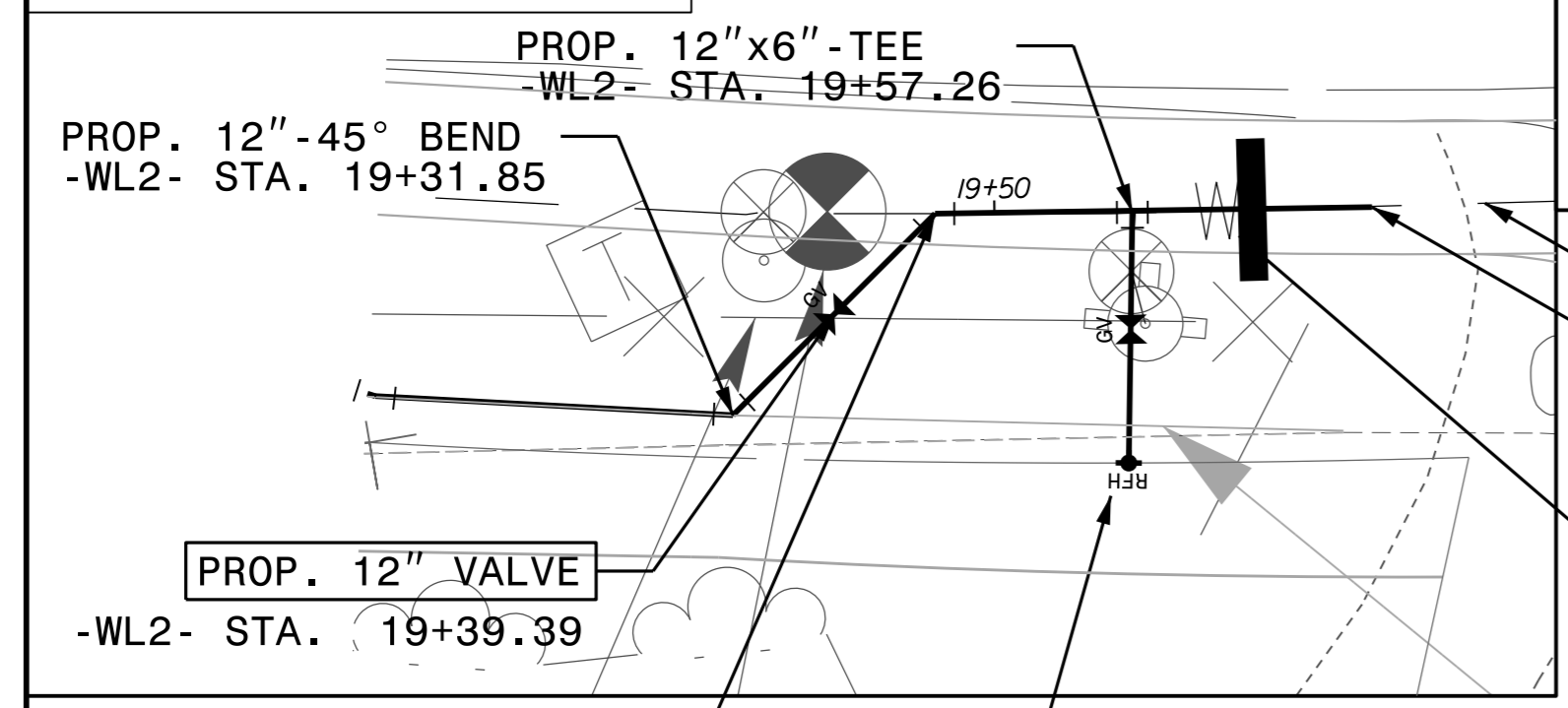
**UTILITY CONSTRUCTION**

**DOCUMENT NOT CONSIDERED FINAL  
UNLESS ALL SIGNATURES COMPLETED**

THIS SHEET CORRESPONDS TO RDY-9

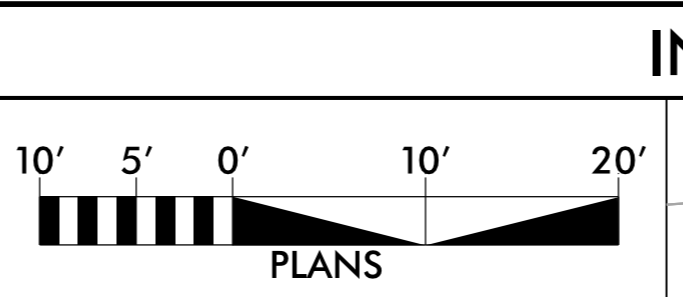


**INSET A**

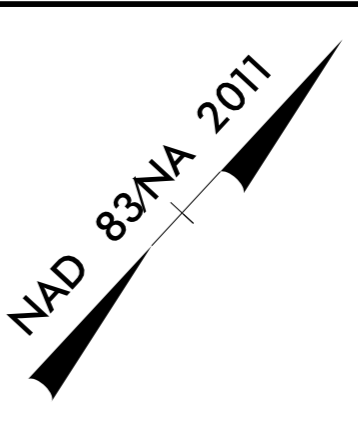
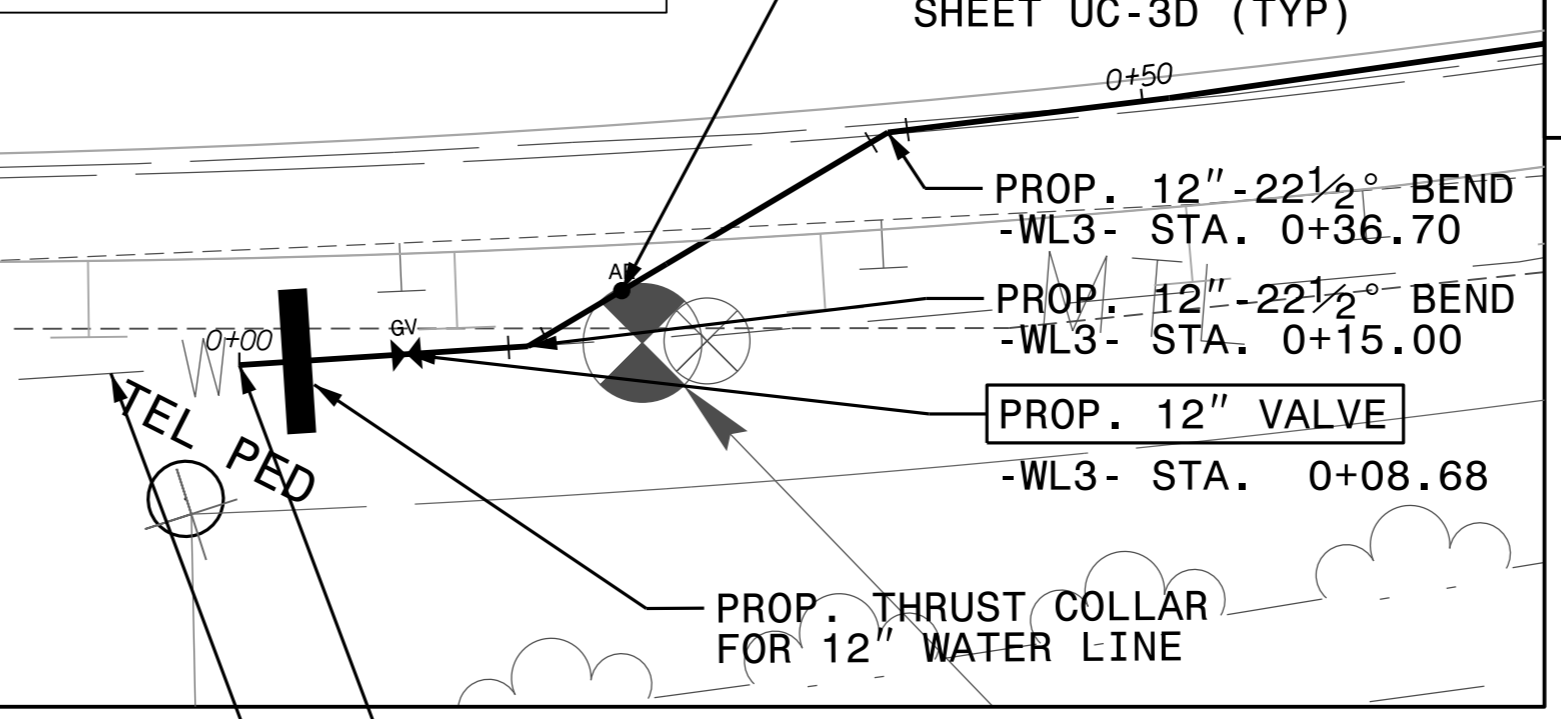


EXIST. 12" WATER LINE  
CONNECT TO EXIST. 12" WATER LINE WITH A 12" MJ SLEEVE  
-WL2- STA. 19+69.87  
-L- STA. 80+51.40, 15.51' RT

PROP. THRUST COLLAR FOR 12" WATER LINE  
SEE DETAIL A ON SHEET UC-3E (TYP)



**INSET B**



CONNECT TO EXIST. 12" WATER LINE WITH A 12" MJ SLEEVE  
-WL3- STA. 0+00.00  
-L- STA. 92+11.28, 22.37' RT

EXIST. 12" WATER LINE

RELOCATE FIRE HYDRANT  
PROP. 15 LF OF 6" FIRE HYDRANT LEG  
PROP. 6" VALVE

-L- STA. 80+39.23, 29.16' RT  
SEE DETAILS C AND D  
SHEET UC-3C (TYP)  
SEE DETAIL E ON SHEET UC-3B (TYP)

ABANDON 21' OF 8" UTILITY PIPE  
EXIST. 8" AC WATER LINE  
SEE NOTES 1 & 2  
-L- STA. 80+00 TO 80+21

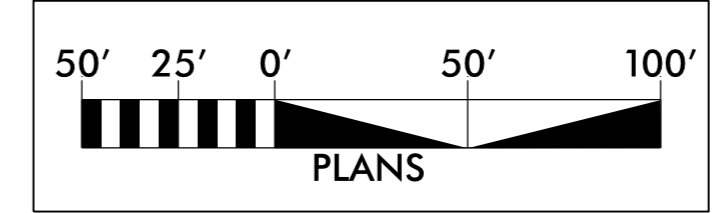
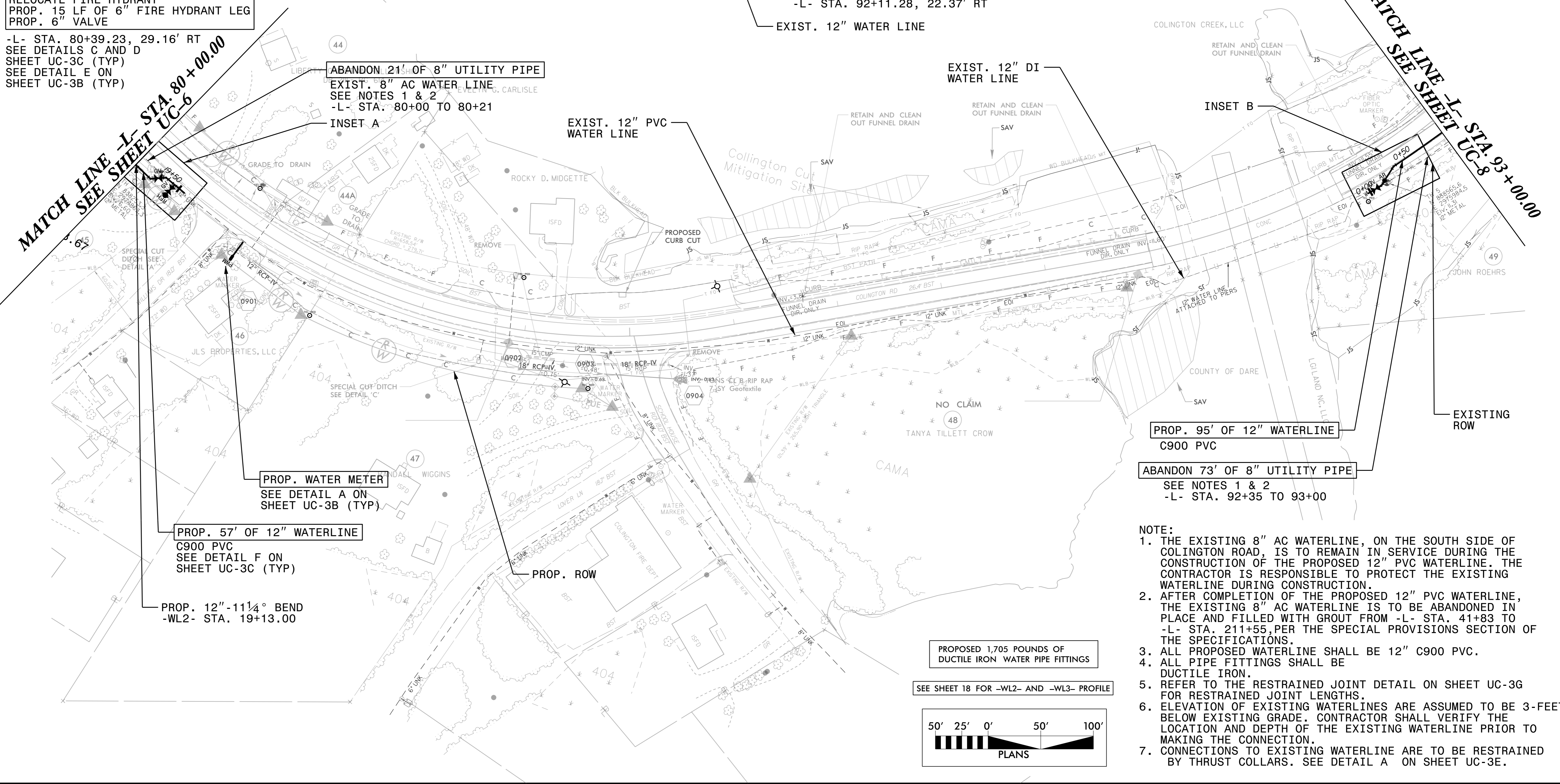
MATCH LINE -L- STA. 80+00.00  
SEE SHEET UC-6

MATCH LINE -L- STA. 93+00.00  
SEE SHEET UC-8

REVISIONS

8/17/99

SYSTEMTIME: 8/17/99 10:14:14 AM  
USER: GYANTM



PLANS