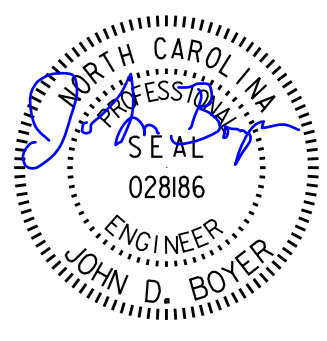


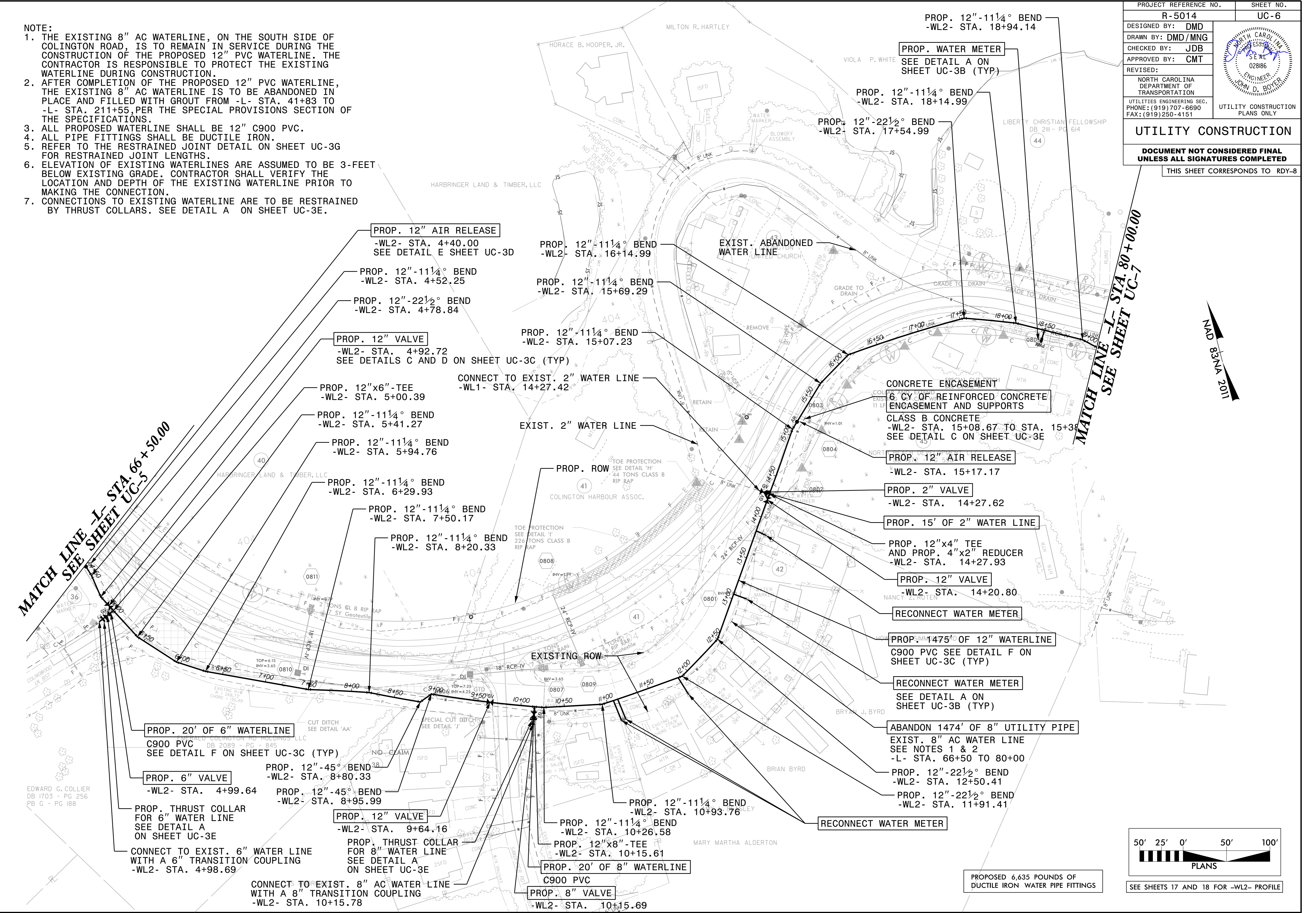
PROJECT REFERENCE NO.	SHEET NO.
R-5014	UC-6
DESIGNED BY: DMD	
DRAWN BY: DMD/MNG	
CHECKED BY: JDB	
APPROVED BY: CMT	
REVISED:	UTILITY CONSTRUCTION PLANS ONLY
NORTH CAROLINA DEPARTMENT OF TRANSPORTATION	
UTILITIES ENGINEERING SEC. PHONE: (919) 707-6690 FAX: (919) 250-4151	

**UTILITY CONSTRUCTION**

**DOCUMENT NOT CONSIDERED FINAL UNLESS ALL SIGNATURES COMPLETED**

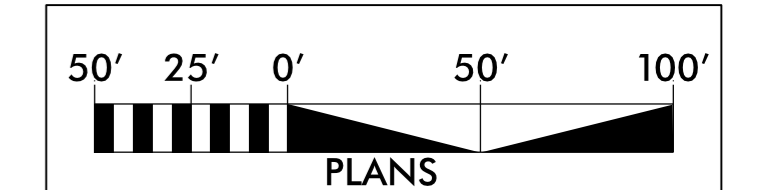
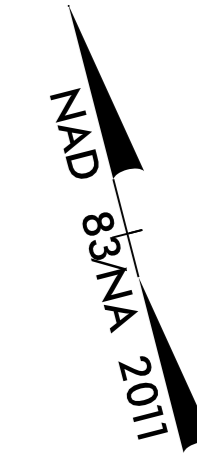
THIS SHEET CORRESPONDS TO RDY-8

- NOTE:**
1. THE EXISTING 8" AC WATERLINE, ON THE SOUTH SIDE OF COLINGTON ROAD, IS TO REMAIN IN SERVICE DURING THE CONSTRUCTION OF THE PROPOSED 12" PVC WATERLINE. THE CONTRACTOR IS RESPONSIBLE TO PROTECT THE EXISTING WATERLINE DURING CONSTRUCTION.
  2. AFTER COMPLETION OF THE PROPOSED 12" PVC WATERLINE, THE EXISTING 8" AC WATERLINE IS TO BE ABANDONED IN PLACE AND FILLED WITH GROUT FROM -L- STA. 41+83 TO -L- STA. 211+55, PER THE SPECIAL PROVISIONS SECTION OF THE SPECIFICATIONS.
  3. ALL PROPOSED WATERLINE SHALL BE 12" C900 PVC.
  4. ALL PIPE FITTINGS SHALL BE DUCTILE IRON.
  5. REFER TO THE RESTRAINED JOINT DETAIL ON SHEET UC-3G FOR RESTRAINED JOINT LENGTHS.
  6. ELEVATION OF EXISTING WATERLINES ARE ASSUMED TO BE 3-FEET BELOW EXISTING GRADE. CONTRACTOR SHALL VERIFY THE LOCATION AND DEPTH OF THE EXISTING WATERLINE PRIOR TO MAKING THE CONNECTION.
  7. CONNECTIONS TO EXISTING WATERLINE ARE TO BE RESTRAINED BY THRUST COLLARS. SEE DETAIL A ON SHEET UC-3E.



**MATCH LINE -L- STA. 66+50.00**  
SEE SHEET UC-5

**MATCH LINE -L- STA. 80+00.00**  
SEE SHEET UC-7



SEE SHEETS 17 AND 18 FOR -WL2- PROFILE

PROPOSED 6,635 POUNDS OF DUCTILE IRON WATER PIPE FITTINGS

REVISIONS

SYSTEM: R5014\_U1\_UC6\_psh.dgn  
USER: GYANTAN

EDWARD C. COLLIER  
DB 1703 - PG 256  
PB 6 - PG 188

PROP. 20' OF 6" WATERLINE  
C900 PVC  
SEE DETAIL F ON SHEET UC-3C (TYP)

PROP. 6" VALVE  
-WL2- STA. 4+99.64

PROP. THRUST COLLAR FOR 6" WATER LINE  
SEE DETAIL A ON SHEET UC-3E

CONNECT TO EXIST. 6" WATER LINE WITH A 6" TRANSITION COUPLING  
-WL2- STA. 4+98.69

PROP. 12"-45° BEND  
-WL2- STA. 8+80.33

PROP. 12"-45° BEND  
-WL2- STA. 8+95.99

PROP. 12" VALVE  
-WL2- STA. 9+64.16

PROP. THRUST COLLAR FOR 8" WATER LINE  
SEE DETAIL A ON SHEET UC-3E

CONNECT TO EXIST. 8" AC WATER LINE WITH A 8" TRANSITION COUPLING  
-WL2- STA. 10+15.78

PROP. 8" VALVE  
-WL2- STA. 10+15.69

PROP. 20' OF 8" WATERLINE  
C900 PVC

PROP. 12"-11 1/4° BEND  
-WL2- STA. 10+26.58

PROP. 12" x 8" -TEE  
-WL2- STA. 10+15.61

PROP. 12"-11 1/4° BEND  
-WL2- STA. 10+93.76

RECONNECT WATER METER

RECONNECT WATER METER  
SEE DETAIL A ON SHEET UC-3B (TYP)

PROP. 1475' OF 12" WATERLINE  
C900 PVC SEE DETAIL F ON SHEET UC-3C (TYP)

RECONNECT WATER METER

PROP. 12" VALVE  
-WL2- STA. 14+20.80

PROP. 12" x 4" TEE AND PROP. 4" x 2" REDUCER  
-WL2- STA. 14+27.93

PROP. 15' OF 2" WATER LINE

PROP. 2" VALVE  
-WL2- STA. 14+27.62

PROP. 12" AIR RELEASE  
-WL2- STA. 15+17.17

CONCRETE ENCASEMENT  
6 CY OF REINFORCED CONCRETE ENCASEMENT AND SUPPORTS  
CLASS B CONCRETE  
-WL2- STA. 15+08.67 TO STA. 15+30.00  
SEE DETAIL C ON SHEET UC-3E

EXIST. 2" WATER LINE

CONNECT TO EXIST. 2" WATER LINE  
-WL1- STA. 14+27.42

PROP. 12"-11 1/4° BEND  
-WL2- STA. 15+07.23

PROP. 12"-11 1/4° BEND  
-WL2- STA. 15+69.29

PROP. 12"-11 1/4° BEND  
-WL2- STA. 16+14.99

PROP. 12" AIR RELEASE  
-WL2- STA. 4+40.00  
SEE DETAIL E SHEET UC-3D

PROP. 12"-11 1/4° BEND  
-WL2- STA. 4+52.25

PROP. 12"-22 1/2° BEND  
-WL2- STA. 4+78.84

PROP. 12" VALVE  
-WL2- STA. 4+92.72  
SEE DETAILS C AND D ON SHEET UC-3C (TYP)

PROP. 12" x 6" -TEE  
-WL2- STA. 5+00.39

PROP. 12"-11 1/4° BEND  
-WL2- STA. 5+41.27

PROP. 12"-11 1/4° BEND  
-WL2- STA. 5+94.76

PROP. 12"-11 1/4° BEND  
-WL2- STA. 6+29.93

PROP. 12"-11 1/4° BEND  
-WL2- STA. 7+50.17

PROP. 12"-11 1/4° BEND  
-WL2- STA. 8+20.33