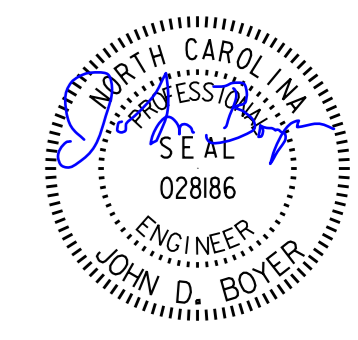
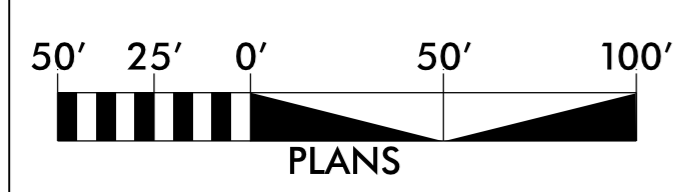
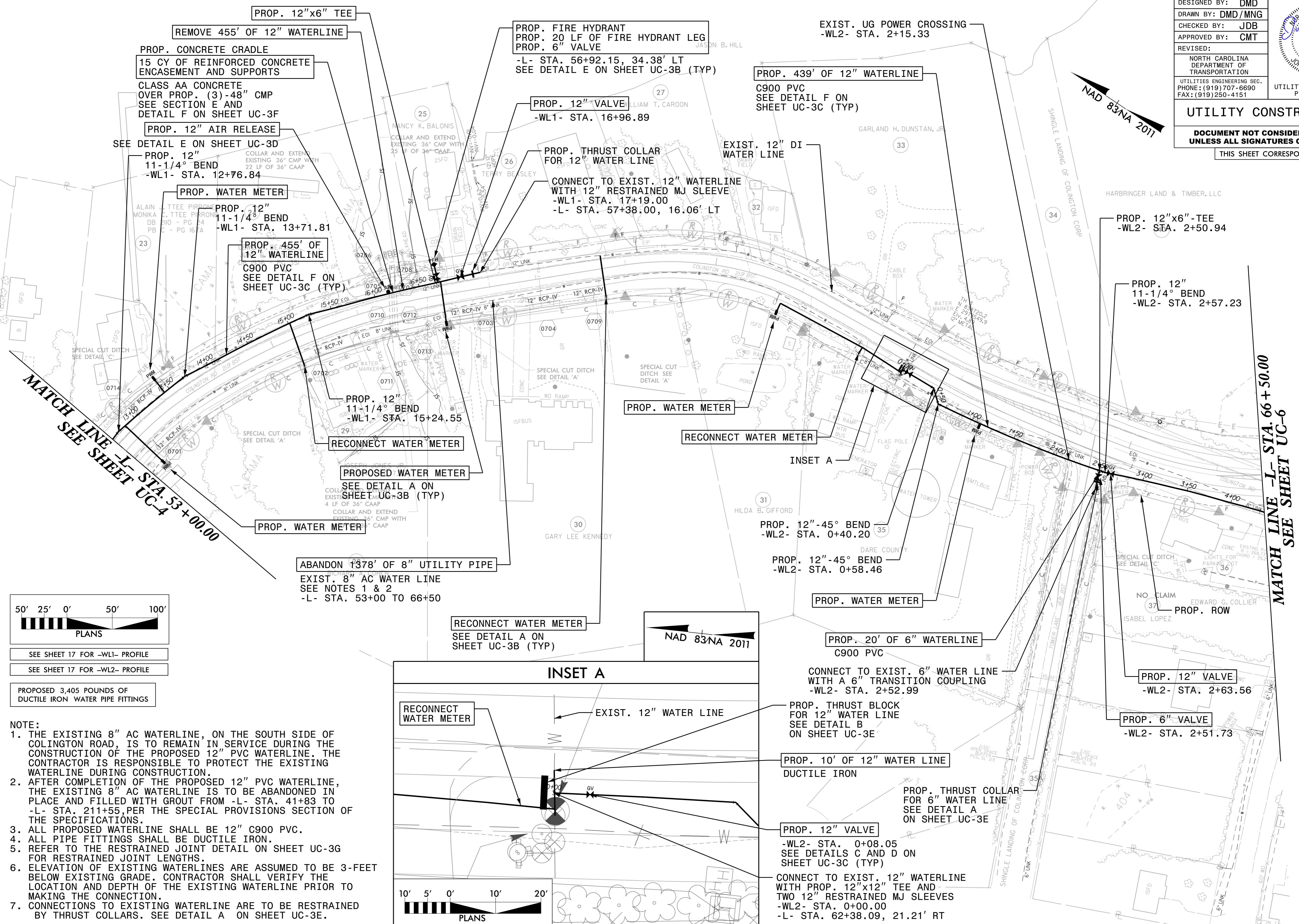
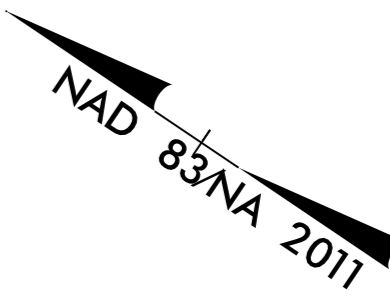


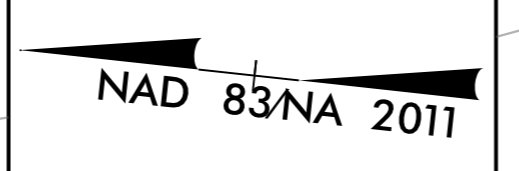
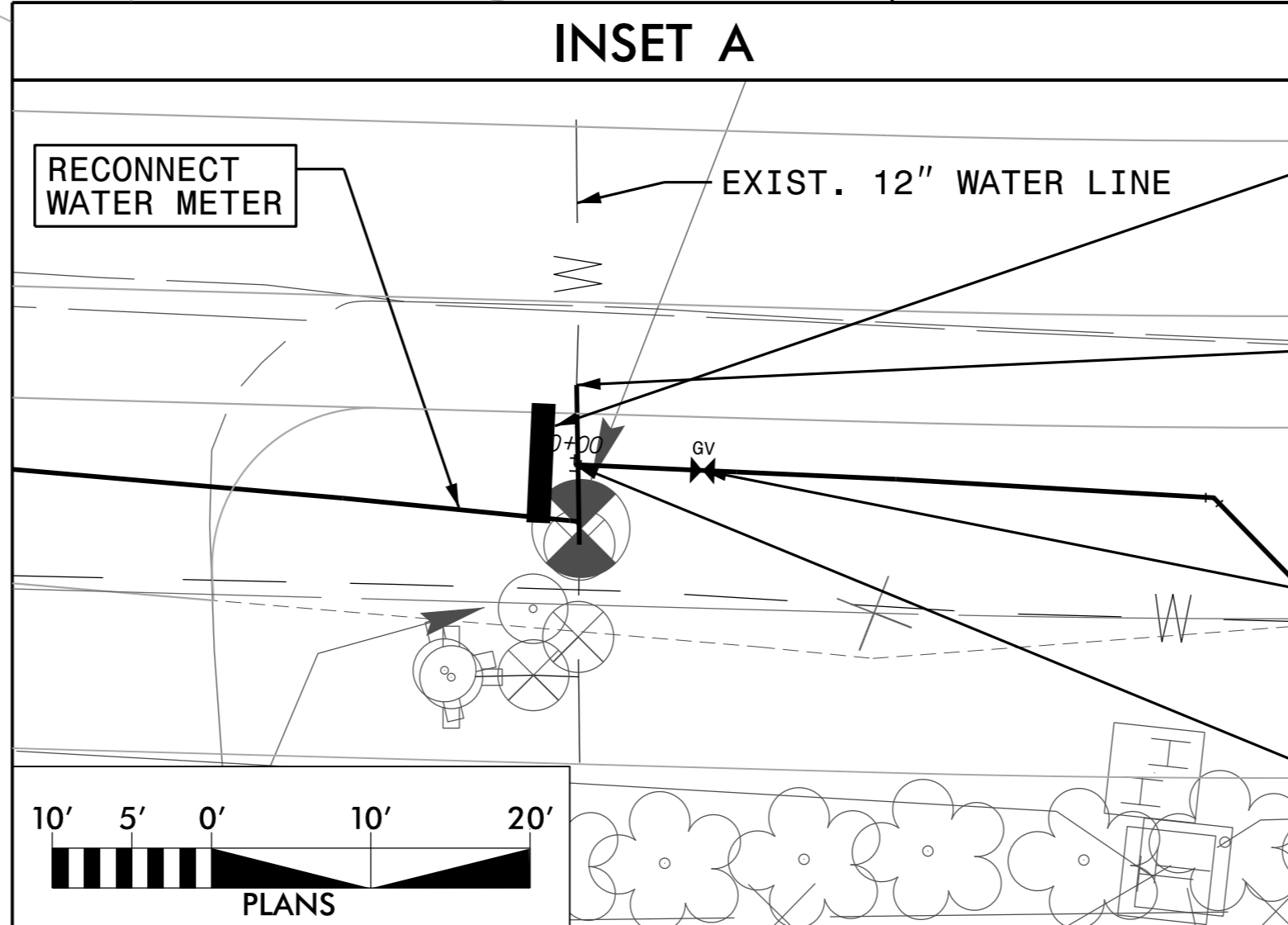
PROJECT REFERENCE NO.	R-5014	SHEET NO.	UC-5
DESIGNED BY:	DMD		
DRAWN BY:	DMD/MNG		
CHECKED BY:	JDB		
APPROVED BY:	CMT		
REVISED:			
NORTH CAROLINA DEPARTMENT OF TRANSPORTATION		UTILITY CONSTRUCTION PLANS ONLY	
UTILITY ENGINEERING SEC. PHONE: (919) 707-6690 FAX: (919) 250-4151			
<b>UTILITY CONSTRUCTION</b>			
<b>DOCUMENT NOT CONSIDERED FINAL UNLESS ALL SIGNATURES COMPLETED</b>			
THIS SHEET CORRESPONDS TO RDY-7			



SEE SHEET 17 FOR -WL1- PROFILE  
SEE SHEET 17 FOR -WL2- PROFILE

PROPOSED 3,405 POUNDS OF DUCTILE IRON WATER PIPE FITTINGS

- NOTE:**
1. THE EXISTING 8" AC WATERLINE, ON THE SOUTH SIDE OF COLINGTON ROAD, IS TO REMAIN IN SERVICE DURING THE CONSTRUCTION OF THE PROPOSED 12" PVC WATERLINE. THE CONTRACTOR IS RESPONSIBLE TO PROTECT THE EXISTING WATERLINE DURING CONSTRUCTION.
  2. AFTER COMPLETION OF THE PROPOSED 12" PVC WATERLINE, THE EXISTING 8" AC WATERLINE IS TO BE ABANDONED IN PLACE AND FILLED WITH GROUT FROM -L- STA. 41+83 TO -L- STA. 211+55, PER THE SPECIAL PROVISIONS SECTION OF THE SPECIFICATIONS.
  3. ALL PROPOSED WATERLINE SHALL BE 12" C900 PVC.
  4. ALL PIPE FITTINGS SHALL BE DUCTILE IRON.
  5. REFER TO THE RESTRAINED JOINT DETAIL ON SHEET UC-3G FOR RESTRAINED JOINT LENGTHS.
  6. ELEVATION OF EXISTING WATERLINES ARE ASSUMED TO BE 3- FEET BELOW EXISTING GRADE. CONTRACTOR SHALL VERIFY THE LOCATION AND DEPTH OF THE EXISTING WATERLINE PRIOR TO MAKING THE CONNECTION.
  7. CONNECTIONS TO EXISTING WATERLINE ARE TO BE RESTRAINED BY THRUST COLLARS. SEE DETAIL A ON SHEET UC-3E.



MATCH LINE -L- STA. 66 + 50.00  
SEE SHEET UC-6

MATCH LINE -L- STA. 53 + 00.00  
SEE SHEET UC-4

REVISIONS

8/17/99

SYSTEM: UC05P05014\_UL\_UC5\_psh.dgn  
USER: GYANTM