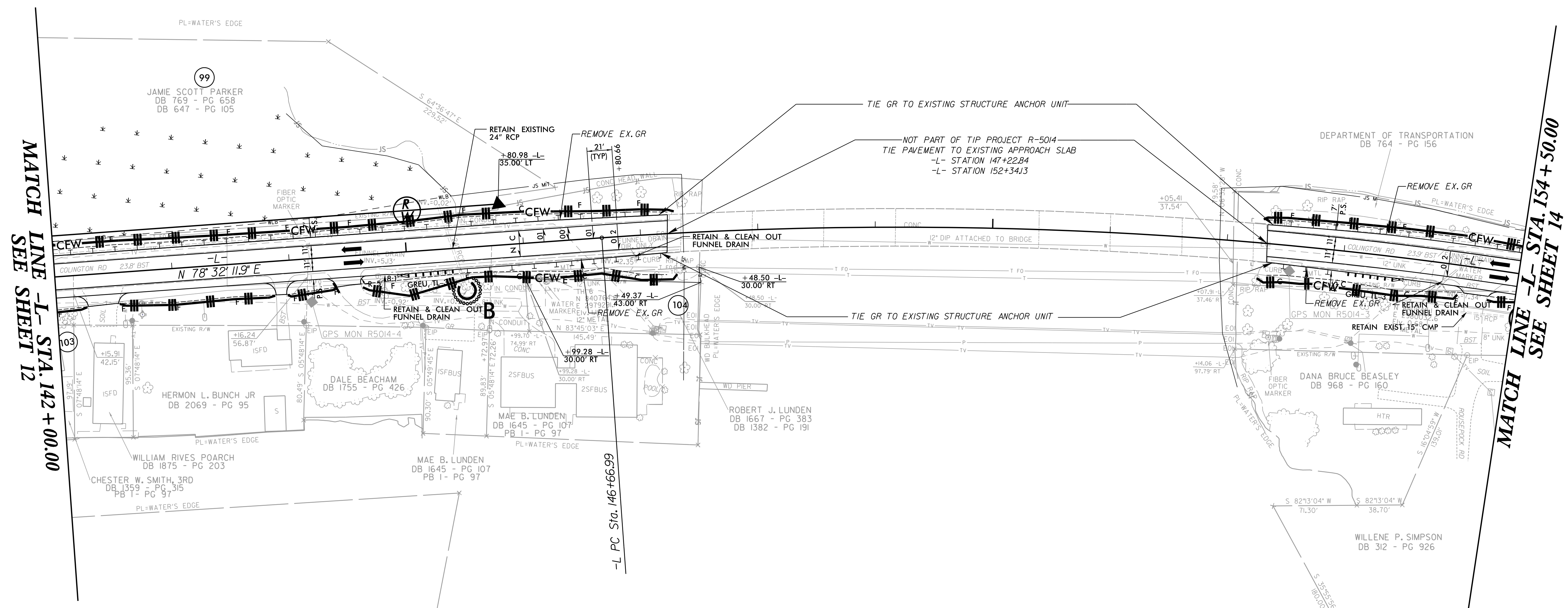


| | |
|--|------------------------------------|
| PROJECT REFERENCE NO. R-5014 | SHEET NO. <i>EC-30/CONST.13</i> |
| RW SHEET NO. | |
| ROADWAY DESIGN ENGINEER | HYDRAULICS ENGINEER |

-L-
PI Sta 151+21.7
 $\Delta = 14' 36" 20.0" (RT)$
 $D = 1' 37" 00.0"$
 $L = 903.44'$
 $T = 454.18'$
 $R = 3,544.07'$
 $SE = 2\%$
 $RO = 42'$
 $V = 80 MPH$

NAD 83 NA 2011

REVISIONS



MATCH LINE -L- STA. 142 + 00.00
SEE SHEET 12

MATCH LINE -L- STA. 154 + 50.00
SEE SHEET 14

PAVED SHOULDER

NOTES:
DRIVEWAY RADII ARE 10' UNLESS OTHERWISE NOTED
SEE SHEET 25 AND 26 FOR -L- PROFILE

8/17/99
I:\E\2018\REF\commental\Design\RE014_hyd_EC_psh_30.dwg
10/20/08
10/20/08