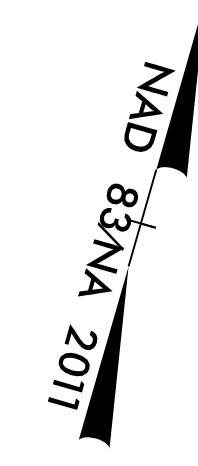
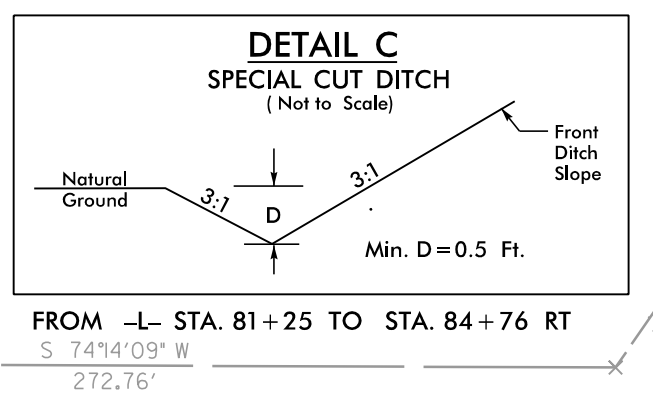
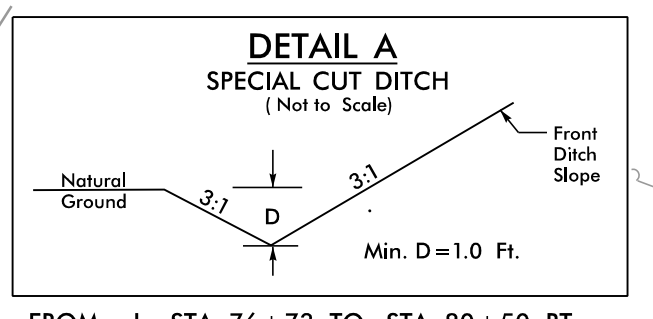
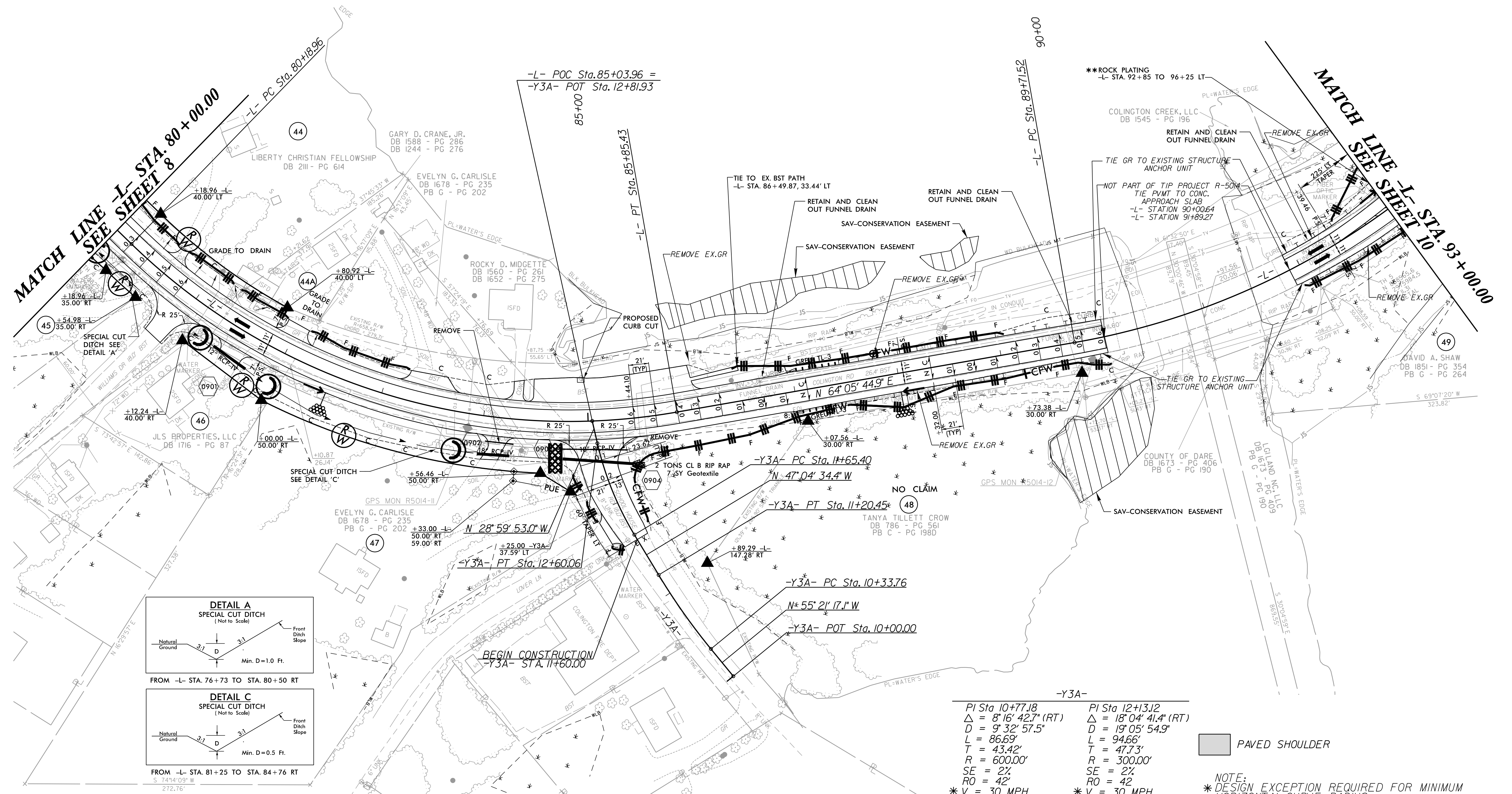


-L-
 PI Sta 83+25.29 PI Sta 92+55.51
 $\Delta = 54^{\circ}05'38.6" (LT)$ $\Delta = 43^{\circ}15'31.2" (LT)$
 $D = 9^{\circ}32'57.5"$ $D = 8^{\circ}00'00.0"$
 $L = 566.47'$ $L = 540.73'$
 $T = 306.34'$ $T = 283.99'$
 $R = 600.00'$ $R = 716.20'$
 $SE = 6\%$ $SE = 6\%$
 $RO = 126'$ $RO = 126'$
 $V = 40 MPH$ $V = 45 MPH$



45 LIBERTY CHRISTIAN FELLOWSHIP
DB 2III - PG 614



-Y3A-
 PI Sta 10+77.18 PI Sta 12+13.12
 $\Delta = 8^{\circ}16'42.7" (RT)$ $\Delta = 18^{\circ}04'41.4" (RT)$
 $D = 9^{\circ}32'57.5"$ $D = 19^{\circ}05'54.9"$
 $L = 86.69'$ $L = 94.66'$
 $T = 43.42'$ $T = 47.73'$
 $R = 600.00'$ $R = 300.00'$
 $SE = 2\%$ $SE = 2\%$
 $RO = 42'$ $RO = 42'$
 $V = 30 MPH$ $V = 30 MPH$

PAVED SHOULDER

NOTE:
 * DESIGN EXCEPTION REQUIRED FOR MINIMUM HORIZONTAL CURVE RADIUS.
 * DRIVEWAY RADIUS ARE 10' UNLESS OTHERWISE NOTED
 * SEE SHEET 26-1 FOR GEOTECHNICAL DETAILS
 * SEE SHEET 23 FOR -L- PROFILE
 * SEE SHEET 31 FOR -Y3A- PROFILE
 * SAV = SUBMERGED AQUATIC VEGETATION

REVISIONS

8/17/99

I:\512018
 R:\external\Design\RE014_hyd_EC_psh_26.dwg
 1/26/2018