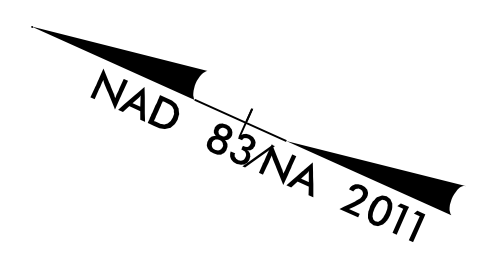


8/17/99

CALYX
ENGINEERS + CONSULTANTS
6750 TRYON ROAD
CARY, NC 27518
phone: 919.851.1912
CALYXengineers.com
NC License # F-1333
Formerly Hubbs Engineers & Consultants

PROJECT REFERENCE NO. R-5014	SHEET NO. <i>EC-22/CONST.05</i>
RW SHEET NO.	
ROADWAY DESIGN ENGINEER	HYDRAULICS ENGINEER



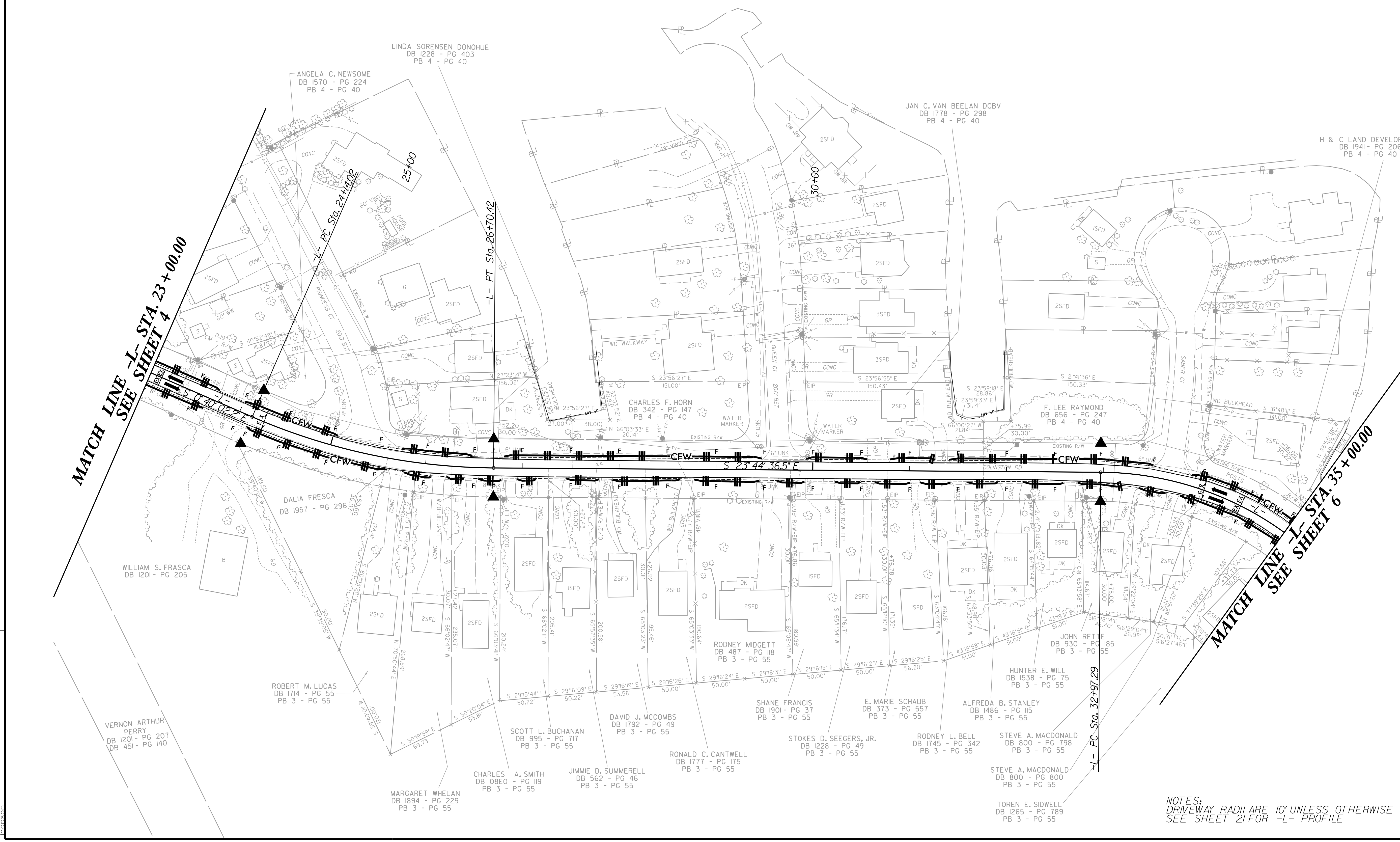
-L-

PI Sta 25+43.98 Δ = 23° 04' 34.3" (LT) D = 9' 00' 00.0" L = 256.40' T = 129.96' R = 636.62' SE = EXIST. V = EXIST.	PI Sta 34+44.90 Δ = 48° 32' 06.7" (RT) D = 17' 30' 00.0" L = 277.34' T = 147.61' R = 327.40' SE = EXIST. V = EXIST.
---	--

REVISIONS

MATCH LINE -L- STA. 23+00.00
SEE SHEET 4

MATCH LINE -L- STA. 35+00.00
SEE SHEET 6



NOTES:
DRIVEWAY RADII ARE 10' UNLESS OTHERWISE NOTED
SEE SHEET 21 FOR -L- PROFILE

I:\512018
 R:\2018\commental\Design\RE014_hyd_EC_psh_22.dgn
 1/2/2018 10:53:00 AM