

5/28/99

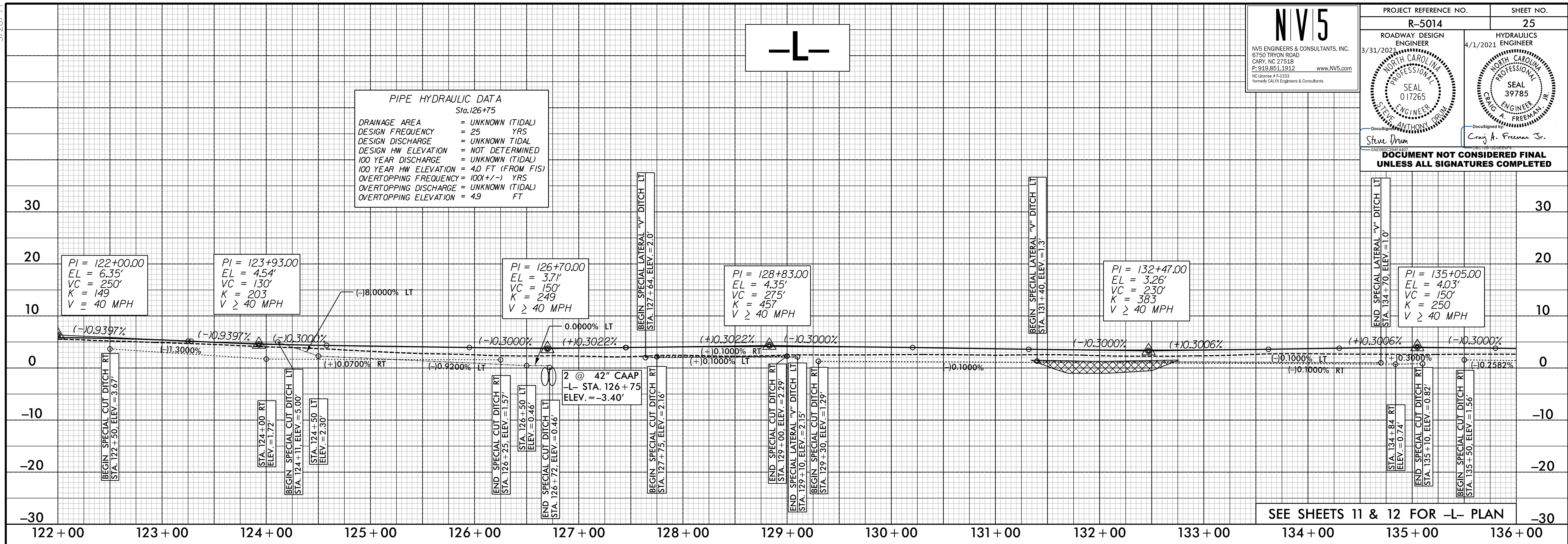
NV5
 NV5 ENGINEERS & CONSULTANTS, INC.
 6750 TRYON ROAD
 CARY, NC 27518
 P: 919.851.1912
 www.nv5.com
 formerly CALYX Engineers & Consultants

PROJECT REFERENCE NO. R-5014	SHEET NO. 25
ROADWAY DESIGN ENGINEER 3/31/2021	HYDRAULICS ENGINEER 4/1/2021
SEAL 017265 NORTH CAROLINA PROFESSIONAL ENGINEER	SEAL 39785 NORTH CAROLINA PROFESSIONAL ENGINEER
DocuSign DocuSign Envelope ID: 78EE31E-70EB-4961-A4D8-1F1EAD02D539	DocuSign DocuSign Envelope ID: 78EE31E-70EB-4961-A4D8-1F1EAD02D539

**DOCUMENT NOT CONSIDERED FINAL
UNLESS ALL SIGNATURES COMPLETED**

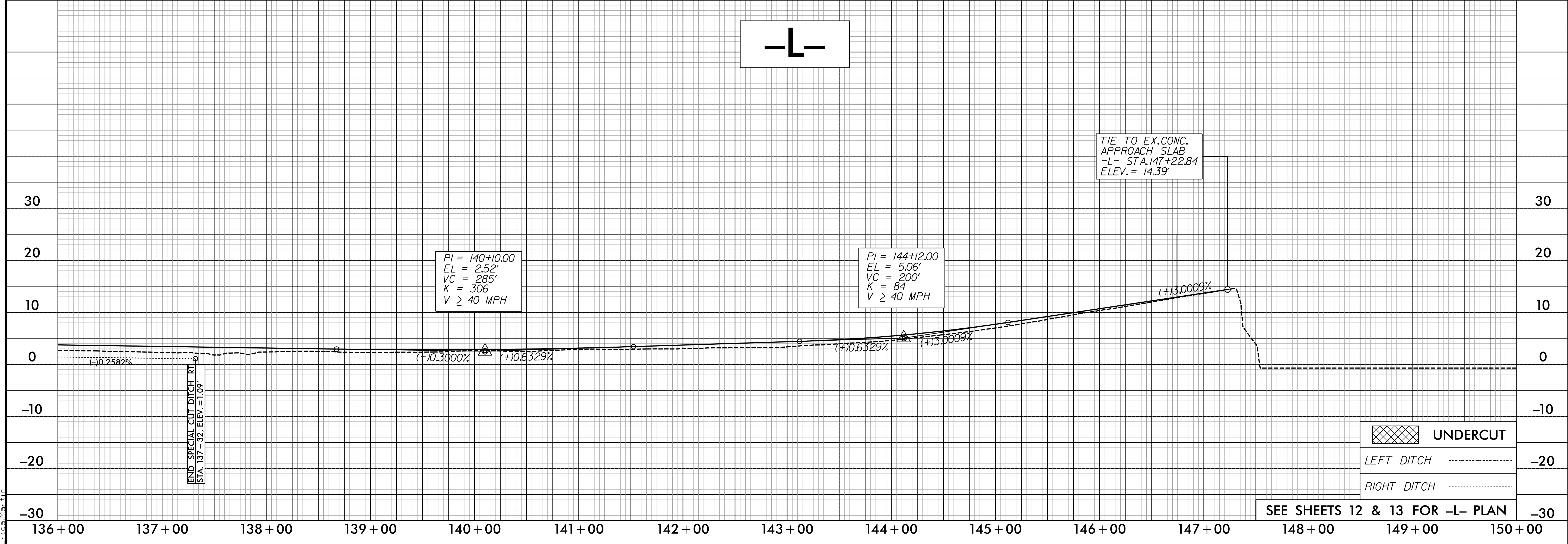
PIPE HYDRAULIC DATA
 Sta. 126+75

DRAINAGE AREA = UNKNOWN (TIDAL)
 DESIGN FREQUENCY = 25 YRS
 DESIGN DISCHARGE = UNKNOWN TIDAL
 DESIGN HW ELEVATION = NOT DETERMINED
 100 YEAR DISCHARGE = UNKNOWN (TIDAL)
 100 YEAR HW ELEVATION = 4.0 FT (FROM FIS)
 OVERTOPPING FREQUENCY = 100X(+/-) YRS
 OVERTOPPING DISCHARGE = UNKNOWN (TIDAL)
 OVERTOPPING ELEVATION = 4.9 FT



SEE SHEETS 11 & 12 FOR -L- PLAN

-L-



UNDERCUT (hatched symbol)

LEFT DITCH (dashed line symbol)

RIGHT DITCH (dotted line symbol)

SEE SHEETS 12 & 13 FOR -L- PLAN

3/21/2021
R:\Projects\5014\Roadway\Profile\125.dgn
E:\cadd\mario