

5/28/19

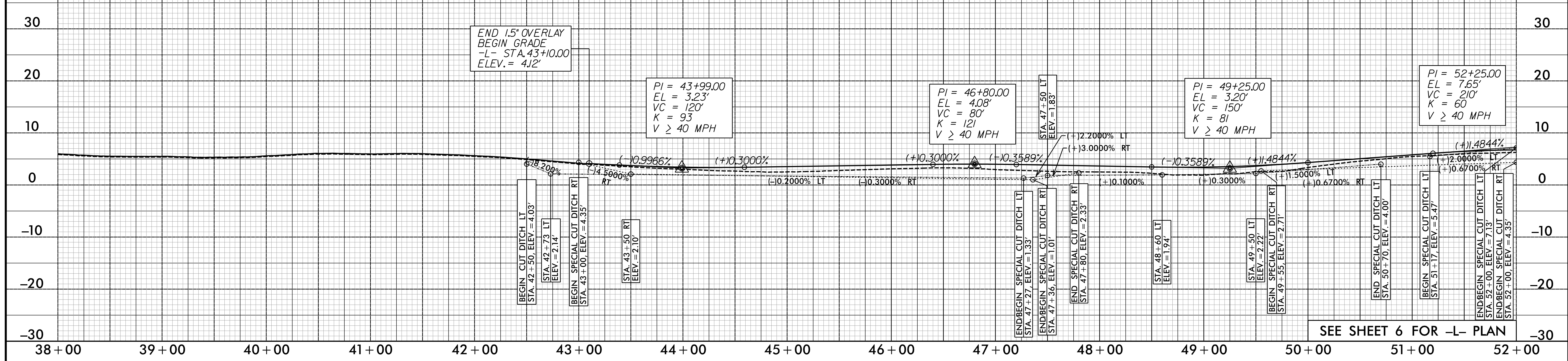
NV5
 NV5 ENGINEERS & CONSULTANTS, INC.
 6750 TRYON ROAD
 CARY, NC 27518
 P: 919.851.1912 www.nv5.com
 NC License # F-5333
 formerly CALYX Engineers & Consultants

PROJECT REFERENCE NO. R-5014	SHEET NO. 22
ROADWAY DESIGN ENGINEER 3/31/2021 NORTH CAROLINA PROFESSIONAL SEAL 017265 STEVE ANTHONY DROWN	HYDRAULICS ENGINEER 4/1/2021 NORTH CAROLINA PROFESSIONAL SEAL 39785 CRAIG A. FREEMAN JR.

DocuSigned by:
Steve Drown

DocuSigned by:
Craig A. Freeman Jr.

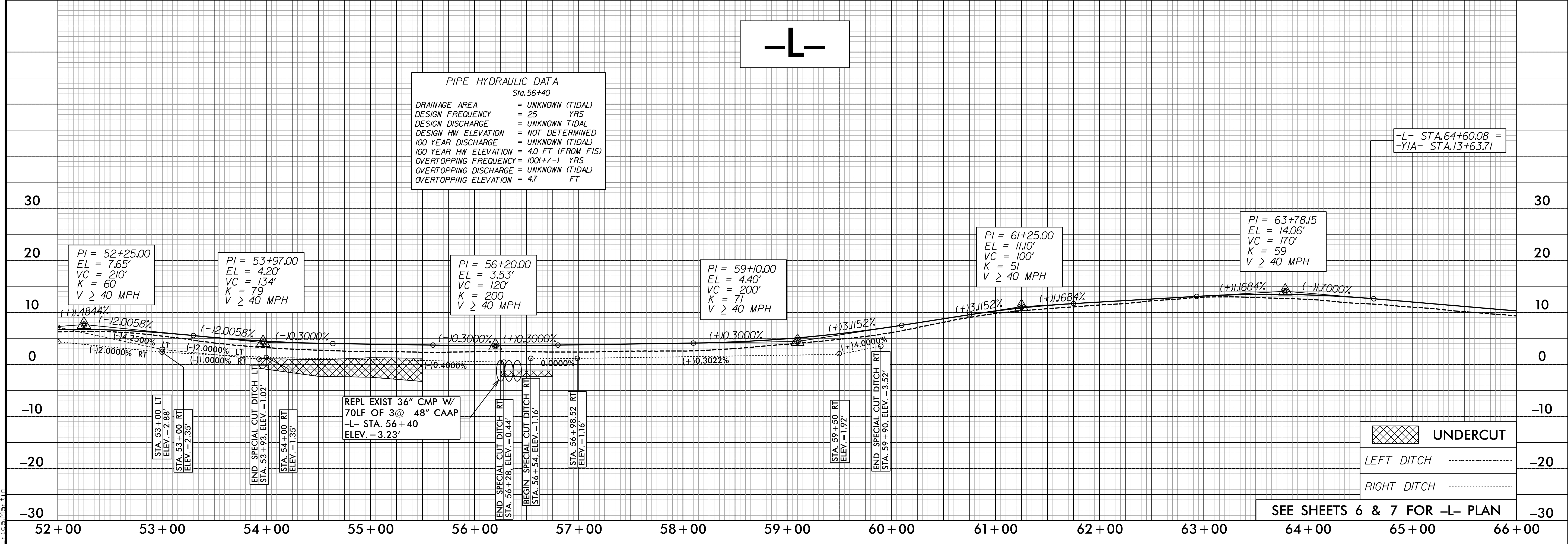
**DOCUMENT NOT CONSIDERED FINAL
UNLESS ALL SIGNATURES COMPLETED**



SEE SHEET 6 FOR -L- PLAN

PIPE HYDRAULIC DATA
Sta. 56+40

DRAINAGE AREA	= UNKNOWN (TIDAL)
DESIGN FREQUENCY	= 25 YRS
DESIGN DISCHARGE	= UNKNOWN TIDAL
DESIGN HW ELEVATION	= NOT DETERMINED
100 YEAR DISCHARGE	= UNKNOWN (TIDAL)
100 YEAR HW ELEVATION	= 4.0 FT (FROM FIS)
OVERTOPPING FREQUENCY	= 100(+/-) YRS
OVERTOPPING DISCHARGE	= UNKNOWN (TIDAL)
OVERTOPPING ELEVATION	= 4.7 FT



REPL EXIST 36" CMP W/
70LF OF 3@ 48" CAAP
-L- STA. 56+40
ELEV. = 3.23'

UNDERCUT

LEFT DITCH
RIGHT DITCH

SEE SHEETS 6 & 7 FOR -L- PLAN

3/21/2021
R:\Projects\N5014_rdy.p\1_22.dgn
E:\C:\Users\rdy\Documents