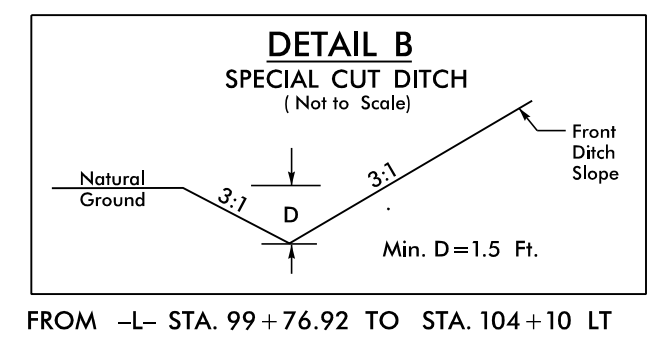


8.17.19



PROJECT REFERENCE NO. R-5014	SHEET NO. 10
RW SHEET NO.	
ROADWAY DESIGN ENGINEER 3/31/2021	HYDRAULICS ENGINEER 4/1/2021
SEAL 017265 STEVE ANTHONY STATE ENGINEER	SEAL 39785 CRAIG A. FREEMAN JR. STATE ENGINEER
DOCUMENT NOT CONSIDERED FINAL UNLESS ALL SIGNATURES COMPLETED	

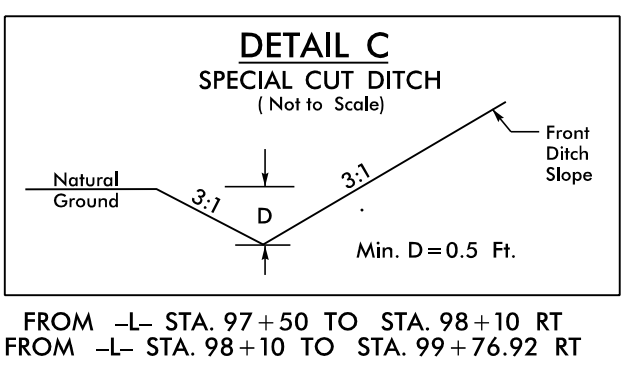
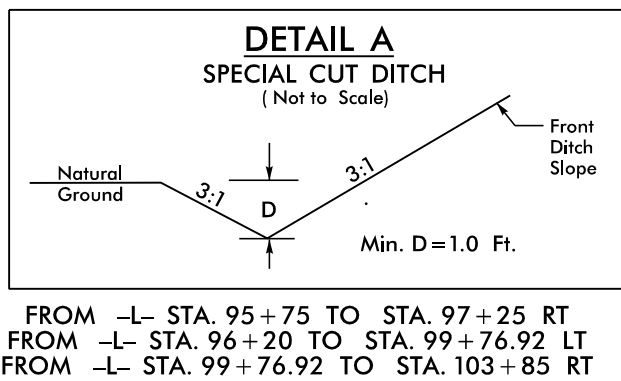
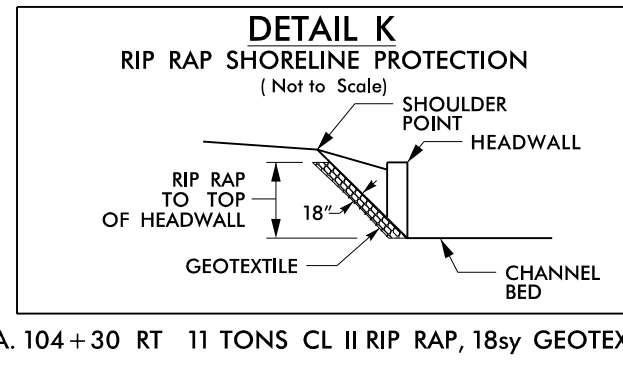
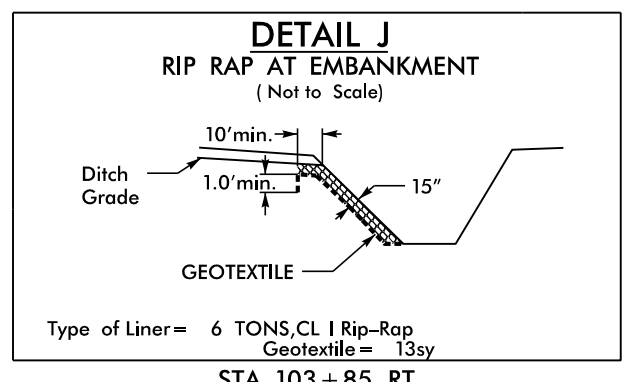
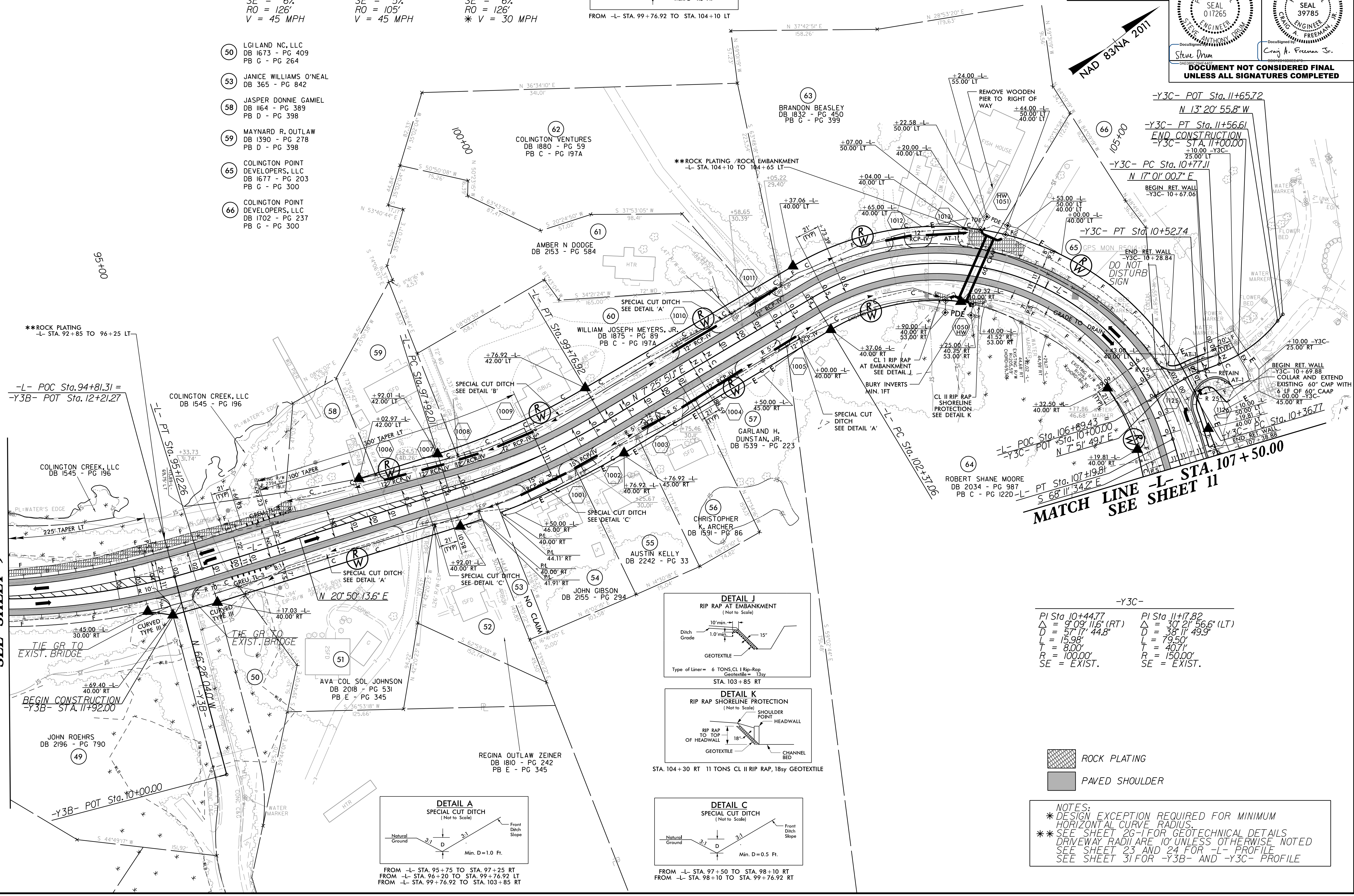
-L-		
PI Sta 92+55.51 Δ = 43°15'31.2" (LT) D = 8'00'00.0" L = 540.73' T = 283.99' R = 716.20' SE = 6% RO = 126' V = 45 MPH	PI Sta 98+84.89 Δ = 13°24'22.6" (LT) D = 7'15'00.0" L = 184.91' T = 92.88' R = 790.29' SE = 5% RO = 105' V = 45 MPH	PI Sta 105+78.55 Δ = 104°22'34.7" (RT) D = 2'37'15.8" L = 482.75' T = 341.49' R = 265.00' SE = 6% RO = 126' * V = 30 MPH



- 50 LGLAND NC, LLC
DB 1673 - PG 409
PB G - PG 264
- 53 JANICE WILLIAMS O'NEAL
DB 365 - PG 842
- 58 JASPER DONNIE GAMIEL
DB 1164 - PG 389
PB D - PG 398
- 59 MAYNARD R. OUTLAW
DB 1390 - PG 278
PB D - PG 398
- 65 COLINGTON POINT DEVELOPERS, LLC
DB 1677 - PG 203
PB G - PG 300
- 66 COLINGTON POINT DEVELOPERS, LLC
DB 1702 - PG 237
PB G - PG 300

MATCH LINE -L- STA. 93 + 00.00
SEE SHEET 9

3/31/2021 R:\Projects\Proje\N5014_rdy_psh_10.dgn



-Y3C-	
PI Sta 10+44.77 Δ = 9°09'11.6" (RT) D = 57'17'44.8" L = 15.98' T = 8.00' R = 100.00' SE = EXIST.	PI Sta 11+17.82 Δ = 30°21'56.6" (LT) D = 38'11'49.9" L = 79.50' T = 40.71' R = 150.00' SE = EXIST.

- ROCK PLATING
- PAVED SHOULDER

NOTES:
 * DESIGN EXCEPTION REQUIRED FOR MINIMUM HORIZONTAL CURVE RADIUS.
 ** SEE SHEET 26-1 FOR GEOTECHNICAL DETAILS DRIVEWAY RADII ARE 10' UNLESS OTHERWISE NOTED
 SEE SHEET 23 AND 24 FOR -L- PROFILE
 SEE SHEET 31 FOR -Y3B- AND -Y3C- PROFILE