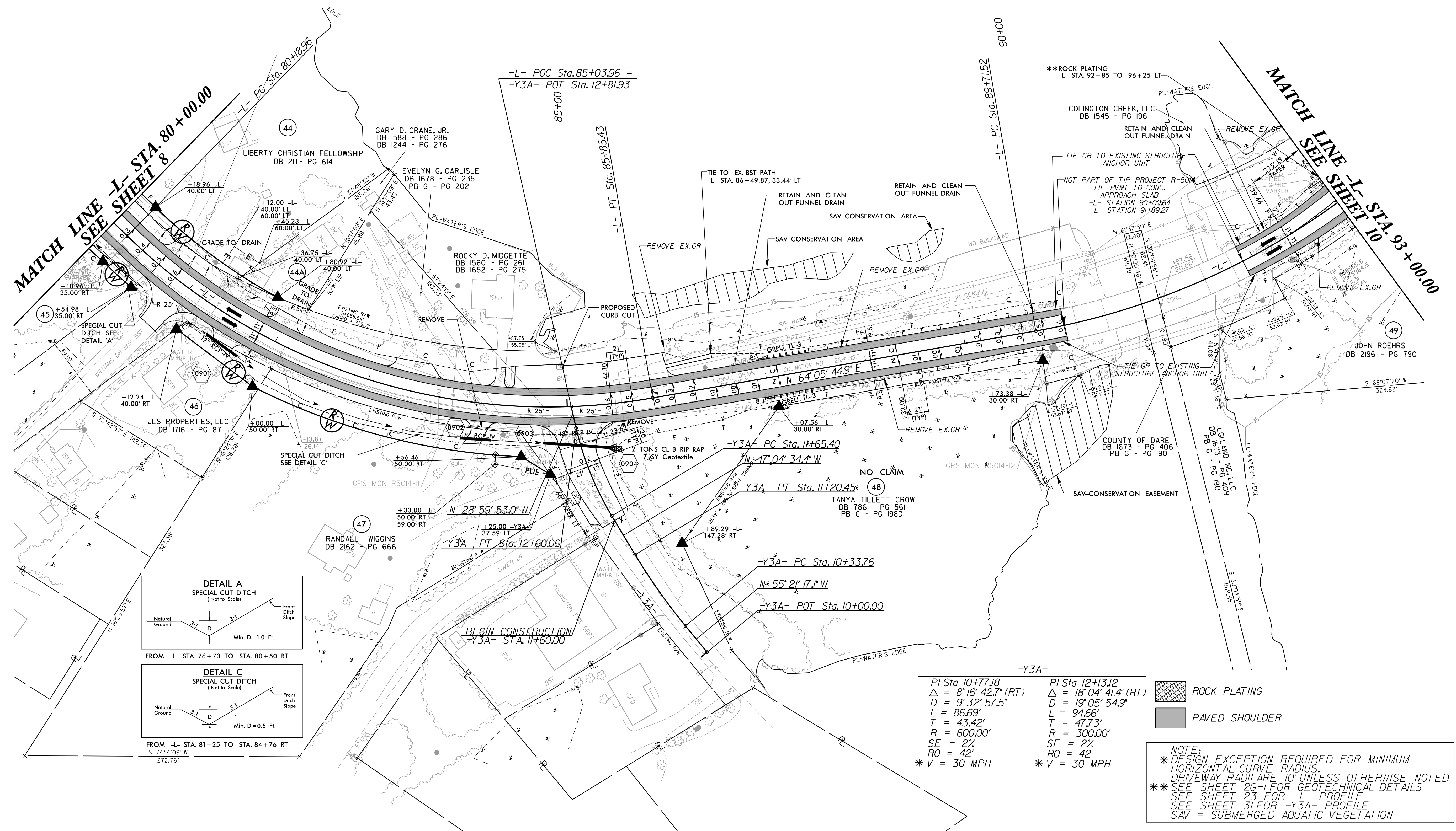




PROJECT REFERENCE NO. R-5014	SHEET NO. 9
RW SHEET NO.	
ROADWAY DESIGN ENGINEER 8/31/2021	HYDRAULICS ENGINEER 4/1/2021
DOCUMENT NOT CONSIDERED FINAL UNLESS ALL SIGNATURES COMPLETED	

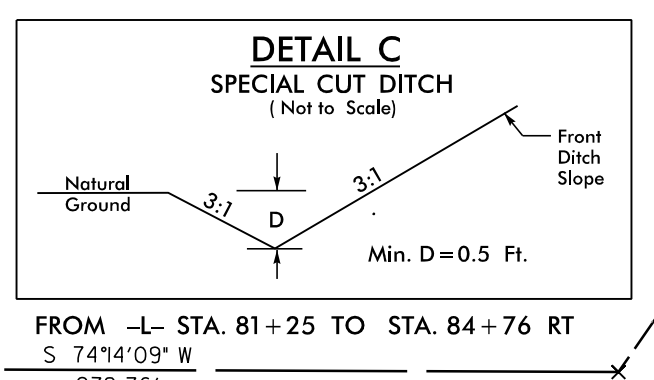
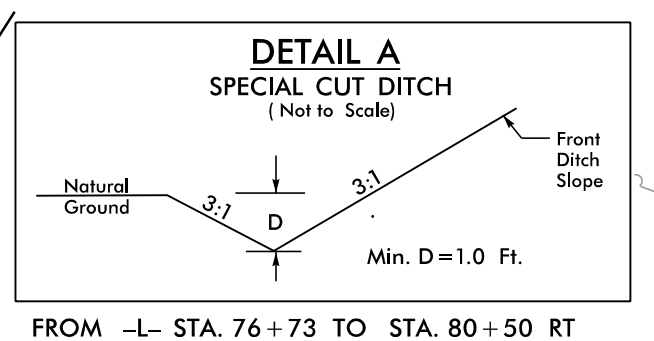
-L-

PI Sta 83+25.29 Δ = 54° 05' 38.6" (LT) D = 9° 32' 57.5" L = 566.47' T = 306.34' R = 600.00' SE = 6% RO = 126' V = 40 MPH	PI Sta 92+55.51 Δ = 43° 15' 31.2" (LT) D = 8° 00' 00.0" L = 540.73' T = 283.99' R = 716.20' SE = 6% RO = 126' V = 45 MPH
--	--



MATCH LINE SEE SHEET 8
-L- STA. 80+00.00

MATCH LINE SEE SHEET 10
-L- STA. 93+00.00



-Y3A-

PI Sta 10+77.18 Δ = 8° 16' 42.7" (RT) D = 9° 32' 57.5" L = 86.69' T = 43.42' R = 600.00' SE = 2% RO = 42' * V = 30 MPH	PI Sta 12+13.12 Δ = 18° 04' 41.4" (RT) D = 19° 05' 54.9" L = 94.66' T = 47.73' R = 300.00' SE = 2% RO = 42' * V = 30 MPH
--	--

ROCK PLATING
 PAVED SHOULDER

NOTE:
* DESIGN EXCEPTION REQUIRED FOR MINIMUM HORIZONTAL CURVE RADIUS.
* DRIVEWAY RADII ARE 10' UNLESS OTHERWISE NOTED
* SEE SHEET 26-I FOR GEOTECHNICAL DETAILS
* SEE SHEET 23 FOR -L- PROFILE
* SEE SHEET 31 FOR -Y3A- PROFILE
* SAV = SUBMERGED AQUATIC VEGETATION

8/17/2021 8:17:09 AM C:\Users\prouj\OneDrive\Documents\Projects\2021\08172021\08172021.dgn