

**NV5**  
 NV5 ENGINEERS & CONSULTANTS, INC.  
 8750 TRYON ROAD  
 CARY, NC 27518  
 P: 919.851.1912 www.NV5.com  
 NC License # F1333  
 Formerly CVLX Engineers & Consultants

PROJECT REFERENCE NO. **R-5014** SHEET NO. **7**

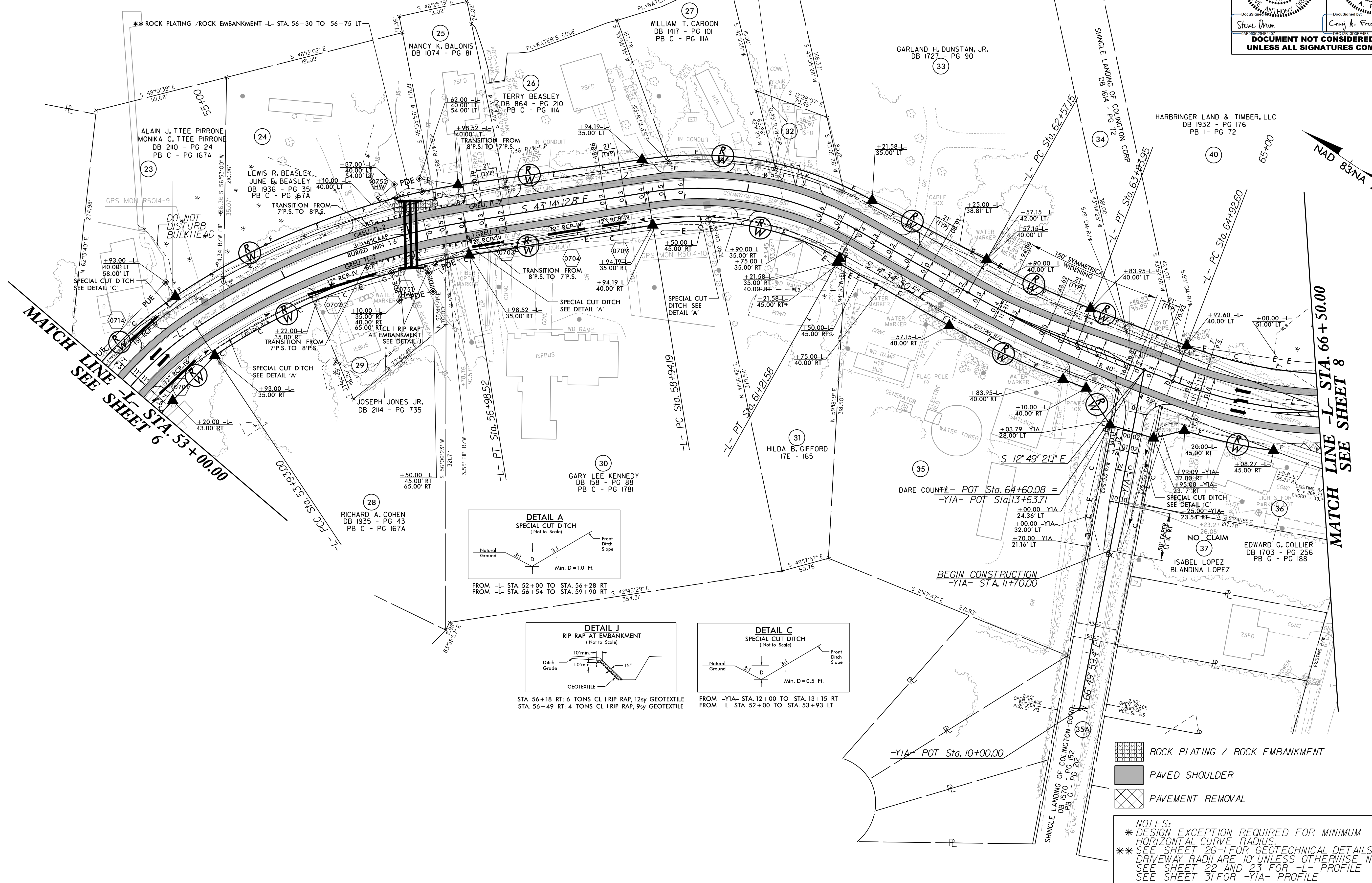
R/W SHEET NO.

ROADWAY DESIGN ENGINEER  
 3/31/2021  
 NORTH CAROLINA PROFESSIONAL SEAL 017265  
 STEVE DRYDEN  
 STATE ENGINEER

HYDRAULICS ENGINEER  
 4/1/2021  
 NORTH CAROLINA PROFESSIONAL SEAL 39785  
 CRAIG A. FREEMAN JR.  
 STATE ENGINEER

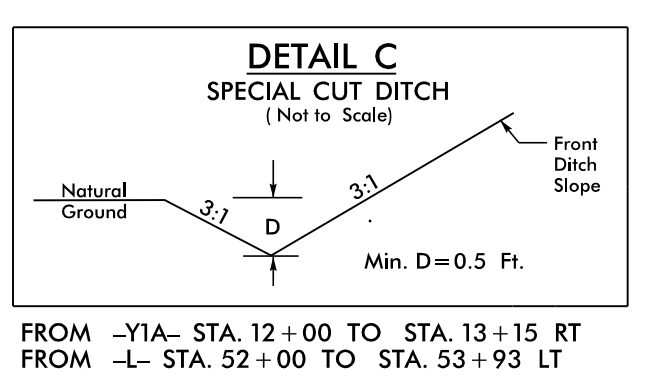
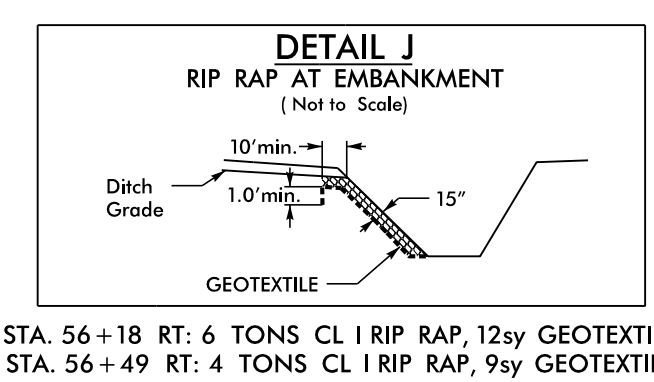
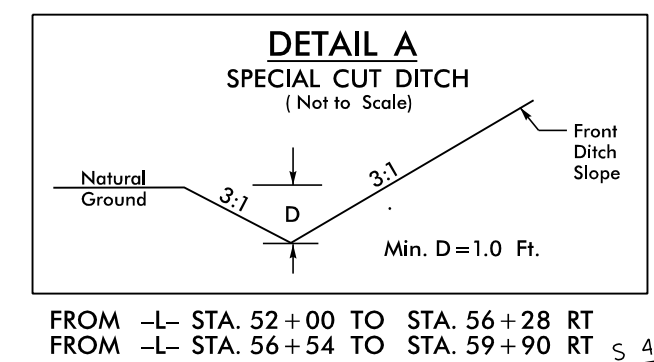
**DOCUMENT NOT CONSIDERED FINAL  
 UNLESS ALL SIGNATURES COMPLETED**

PI Sta	PI Sta	PI Sta	PI Sta	PI Sta
52+50.59	55+48.13	60+12.41	63+20.66	74+83.10
$\Delta = 51^{\circ}50'58.6"$ (RT)	$\Delta = 24^{\circ}28'32.5"$ (RT)	$\Delta = 38^{\circ}39'22.3"$ (RT)	$\Delta = 8^{\circ}14'30.6"$ (LT)	$\Delta = 127^{\circ}49'20.5"$ (LT)
D = 16'51'06.1"	D = 8'00'39.4"	D = 17'00'00.0"	D = 6'30'00.0"	D = 11'48'48.8"
L = 307.68'	L = 305.53'	L = 227.39'	L = 126.80'	L = 1,082.00'
T = 165.28'	T = 155.13'	T = 118.21'	T = 63.51'	T = 990.50'
R = 340.00'	R = 715.22'	R = 337.03'	R = 881.47'	R = 485.00'
SE = 6%	SE = 6%	SE = 6%	SE = 6%	SE = 6%
RO = 126'	RO = 126'	RO = 126'	RO = 105'	RO = 126'
V = 35 MPH	V = 45 MPH	V = 30 MPH	V = 50 MPH	V = 40 MPH



**MATCH LINE SEE SHEET 6**  
 -L- PC STA. 53+00.00

**MATCH LINE SEE SHEET 8**  
 -L- STA. 66+50.00



- ROCK PLATING / ROCK EMBANKMENT
- PAVED SHOULDER
- PAVEMENT REMOVAL

**NOTES:**  
 \* DESIGN EXCEPTION REQUIRED FOR MINIMUM HORIZONTAL CURVE RADIUS.  
 \*\* SEE SHEET 26-1 FOR GEOTECHNICAL DETAILS  
 DRIVEWAY RADII ARE 10' UNLESS OTHERWISE NOTED  
 SEE SHEET 22 AND 23 FOR -L- PROFILE  
 SEE SHEET 31 FOR -Y1A- PROFILE

8/17/09

3/31/2021  
 C:\Users\pcoj\OneDrive\Projects\014\_rdy\_psh\_07.dgn  
 E:\PROJECTS\014