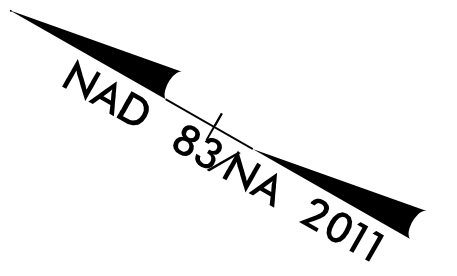
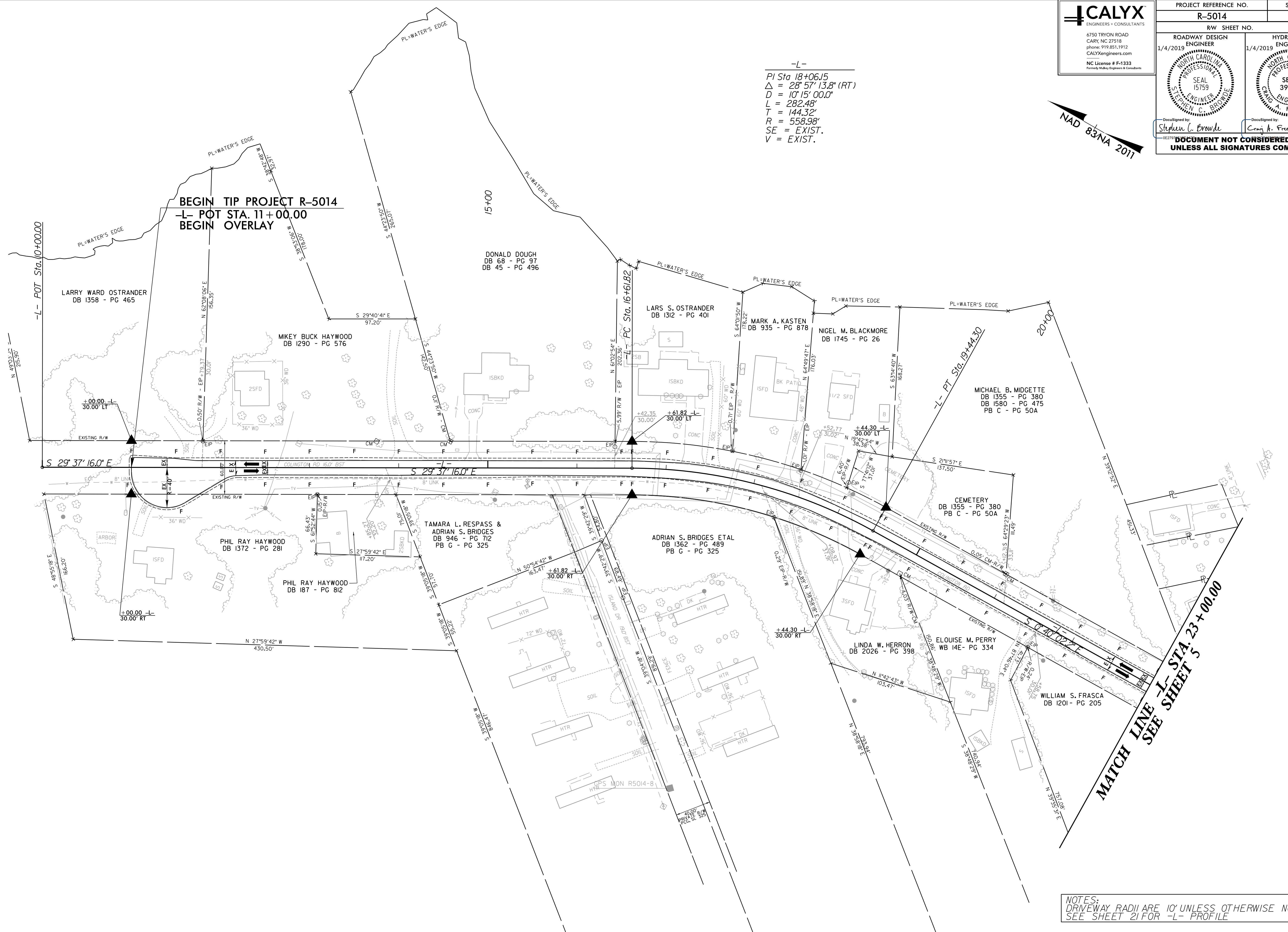




PROJECT REFERENCE NO. R-5014		SHEET NO. 4	
RW SHEET NO.			
ROADWAY DESIGN ENGINEER 1/4/2019		HYDRAULICS ENGINEER 1/4/2019	
Designed by Stephen C. Browde		Designed by Craig A. Freeman Jr.	
DOCUMENT NOT CONSIDERED FINAL UNLESS ALL SIGNATURES COMPLETED			



-L-
 PI Sta 18+06.15
 $\Delta = 28^{\circ} 57' 13.8''$ (RT)
 $D = 10^{\circ} 15' 00.0''$
 $L = 282.48'$
 $T = 144.32'$
 $R = 558.98'$
 $SE = EXIST.$
 $V = EXIST.$



NOTES:
 DRIVEWAY RADII ARE 10' UNLESS OTHERWISE NOTED
 SEE SHEET 21 FOR -L- PROFILE

8/17/99

12/8/2018 C:\work\proj\RES014_rdy_psh_04.dgn