

# PAVEMENT SCHEDULE

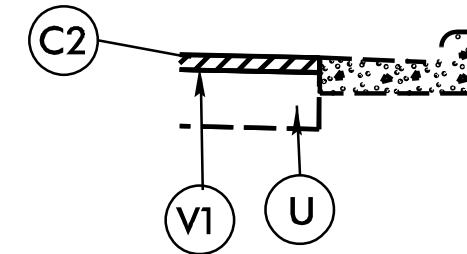
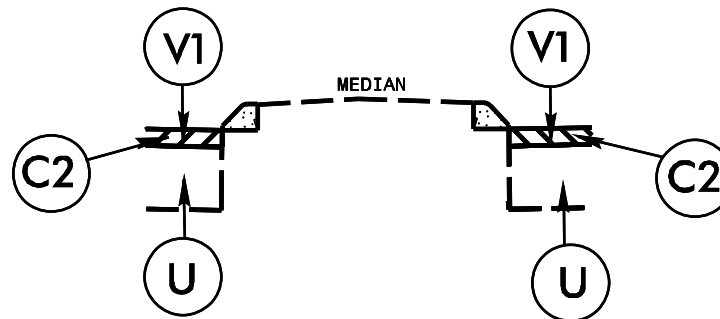
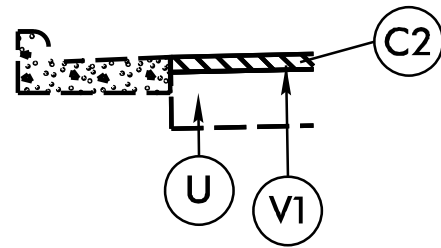
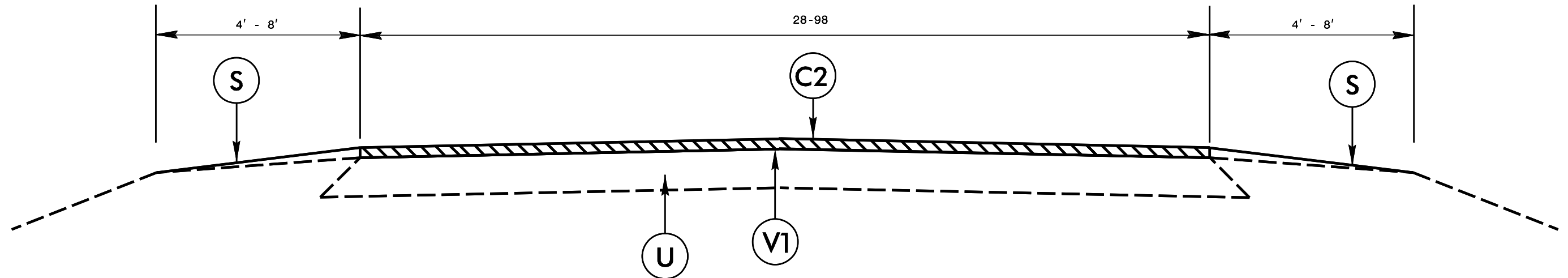
PROJECT REFERENCE NO.

SHEET NO.

2022CPT.05.02.20921.1

11

C1	1 1/4" ASPHALT CONCRETE SURFACE COURSE, TYPE S9.5B, AT AN AVERAGE RATE OF 137.5 LBS. PER SQ. YD.	S	SHOULDER GRADING ASB REQUIRED (EXCEPT AT RESIDENTIAL AREAS)
C2	1 1/2" ASPHALT CONCRETE SURFACE COURSE, TYPE S9.5B, AT AN AVERAGE RATE OF 165 LBS. PER SQ. YD.	U	EXISTING PAVEMENT
C3	1 1/2" ASPHALT CONCRETE SURFACE COURSE, TYPE S9.5C, AT AN AVERAGE RATE OF 168 LBS. PER SQ. YD.	V1	1 1/2" MILLING
		V2	0" - 1 1/2" MILLING
		V3	0" - 1 1/4" MILLING



TYPICAL SECTION NO. 3