

# PAVEMENT SCHEDULE

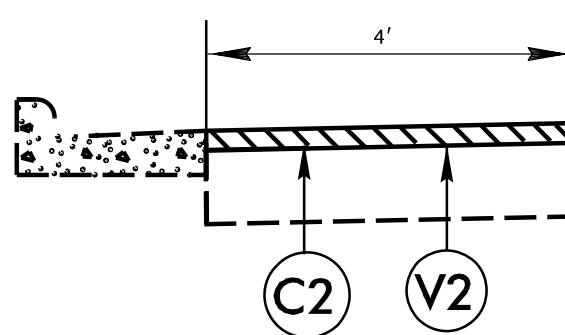
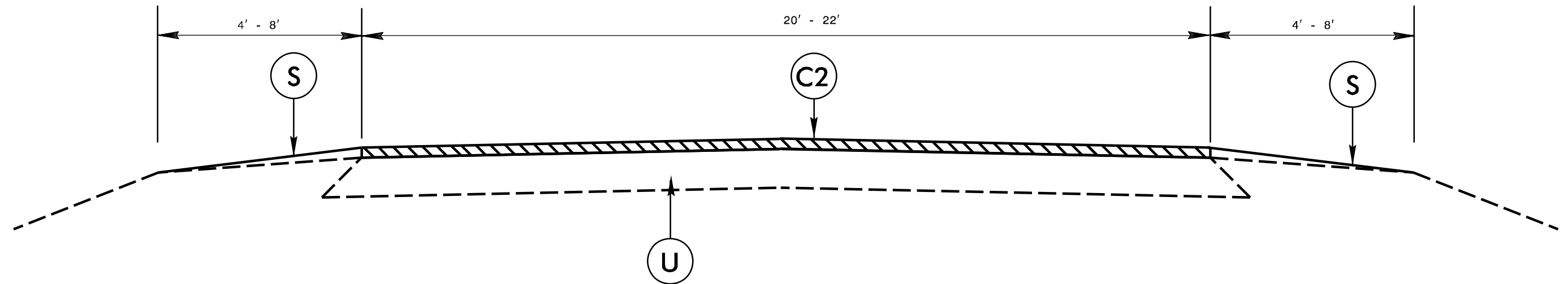
PROJECT REFERENCE NO.

SHEET NO.

2022CPT.05.02.20921.1

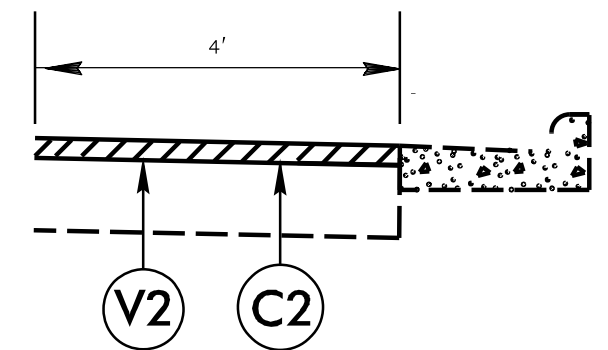
10

C1	1 1/4" ASPHALT CONCRETE SURFACE COURSE, TYPE S9.5B, AT AN AVERAGE RATE OF 137.5 LBS. PER SQ. YD.	S	SHOULDER GRADING ASB REQUIRED (EXCEPT AT RESIDENTIAL AREAS)
C2	1 1/2" ASPHALT CONCRETE SURFACE COURSE, TYPE S9.5B, AT AN AVERAGE RATE OF 165 LBS. PER SQ. YD.	U	EXISTING PAVEMENT
C3	1 1/2" ASPHALT CONCRETE SURFACE COURSE, TYPE S9.5C, AT AN AVERAGE RATE OF 168 LBS. PER SQ. YD.	V1	1 1/2" MILLING
		V2	0" - 1 1/2" MILLING
		V3	0" - 1 1/4" MILLING



\*Mill 1 1/2" +/- on map 2 Bridge # 0224 as directed by the engineer to resurface and not add any additional weight on the bridge.

\*0" - 1 1/2" MILLING on map # 12 only



TYPICAL SECTION NO. 2