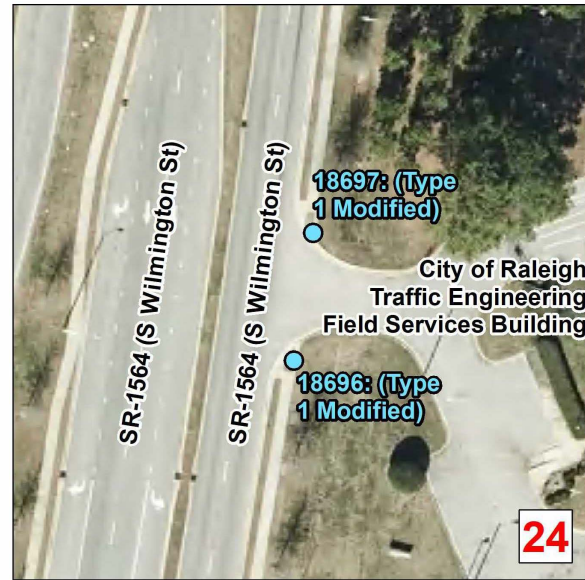






* Additional ramp improvements for this same intersection shown in tile 22.



Curb Ramps To Be Repaired		
●	Retrofit	
●	Remove and Replace	
●	New Curb Ramp	
●	Remove Ramp	
■	Other	
	Municipal Boundary	
	NCHPO Historic Boundary (NR and LHD)	
2022 Central WBS: 2022CPT.05.02.20921.1 S Wilmington St From SR 4363 To Rush St		
		NORTH CAROLINA DEPARTMENT OF TRANSPORTATION DIVISION 5
Source: NV5 Engineers and Consultants Inc., ESRI, NC OneMap, NCDOT, NCHPO		