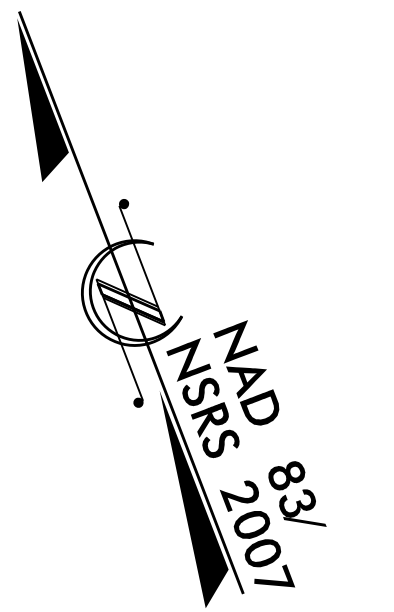
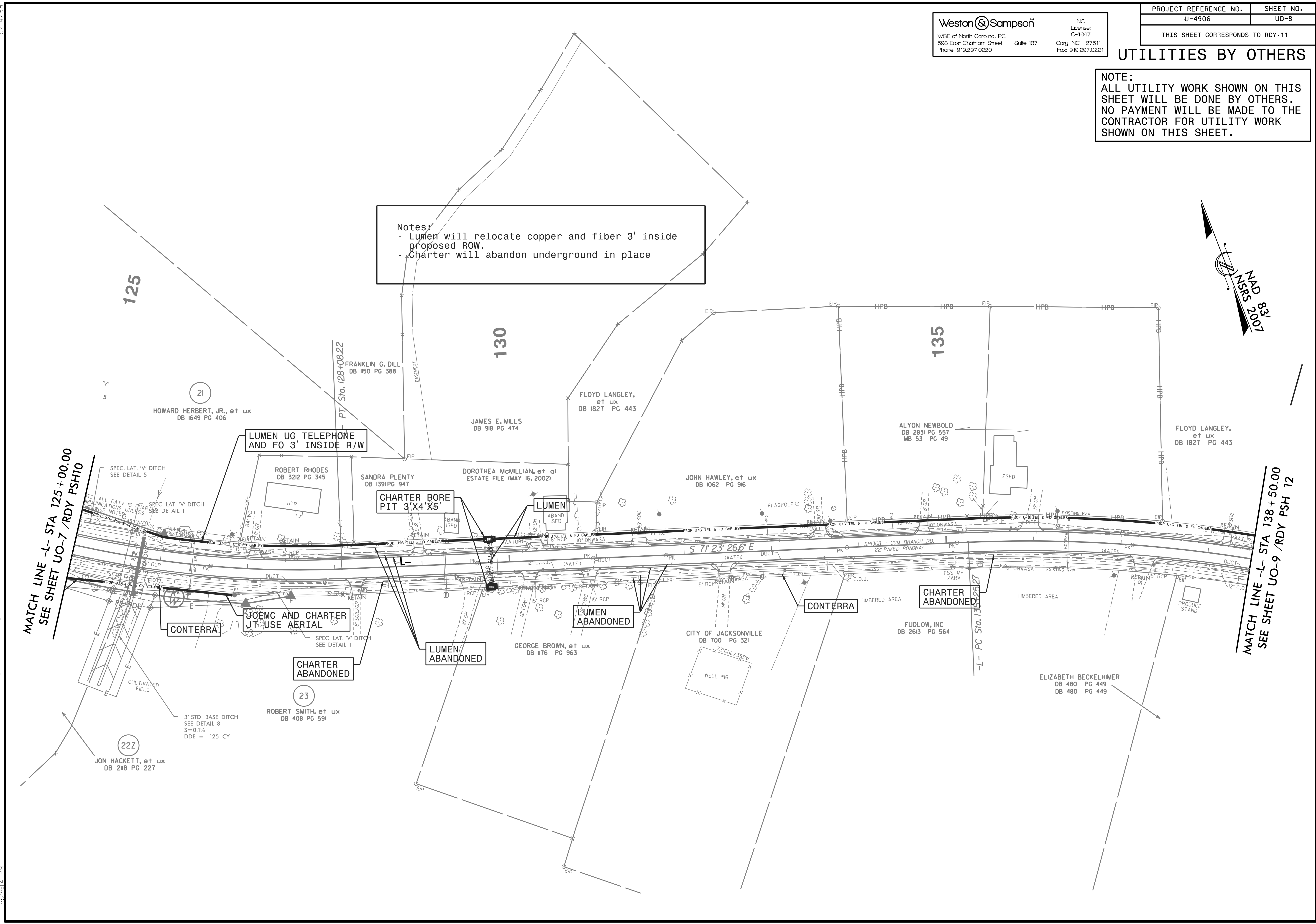


**UTILITIES BY OTHERS**

**NOTE:**  
 ALL UTILITY WORK SHOWN ON THIS SHEET WILL BE DONE BY OTHERS. NO PAYMENT WILL BE MADE TO THE CONTRACTOR FOR UTILITY WORK SHOWN ON THIS SHEET.



**Notes:**  
 - Lumen will relocate copper and fiber 3' inside proposed ROW.  
 - Charter will abandon underground in place



MATCH LINE -L- STA 125+00.00  
 SEE SHEET UO-7 /RDY PSH10

MATCH LINE -L- STA 138+50.00  
 SEE SHEET UO-9 /RDY PSH 12

5/14/99  
 8/10/2006  
 U-4906\Utilities\Coordination\UO-4906-ut\_rdy\11\_UO08\_psh.dgn  
 OBS: 0696\0836\0836.dwg