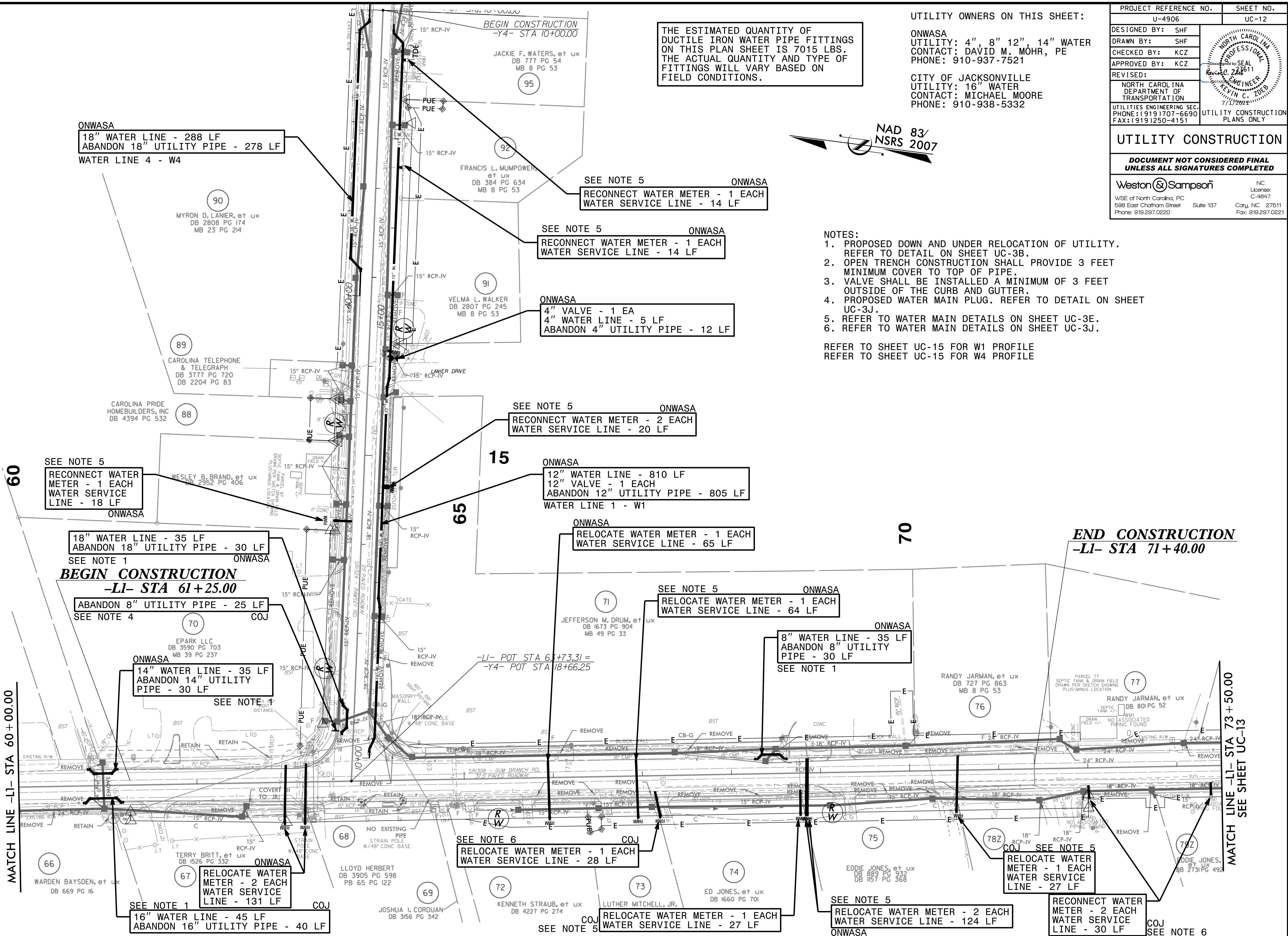


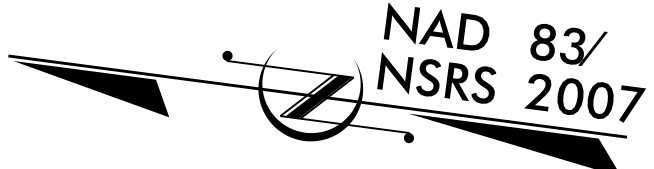
5/26/2021 11:45:03 AM \\wse\local\wse\Projects\NCA\_CarryoldServer\Engineer\Jobs\0696\026\12100\_U-4906\Utilities\Engineering\UC\Proj\U4906\_ut\_rdy25\_UC12\_psh.dgn

8/17/99



THE ESTIMATED QUANTITY OF DUCTILE IRON WATER PIPE FITTINGS ON THIS PLAN SHEET IS 7015 LBS. THE ACTUAL QUANTITY AND TYPE OF FITTINGS WILL VARY BASED ON FIELD CONDITIONS.

UTILITY OWNERS ON THIS SHEET:  
 ONWASA  
 UTILITY: 4", 8" 12", 14" WATER  
 CONTACT: DAVID M. MOHR, PE  
 PHONE: 910-937-7521  
 CITY OF JACKSONVILLE  
 UTILITY: 16" WATER  
 CONTACT: MICHAEL MOORE  
 PHONE: 910-938-5332



PROJECT REFERENCE NO.	SHEET NO.
U-4906	UC-12
DESIGNED BY: SHF	
DRAWN BY: SHF	
CHECKED BY: KCZ	
APPROVED BY: KCZ	
REVISED:	
NORTH CAROLINA DEPARTMENT OF TRANSPORTATION	UTILITY CONSTRUCTION PLANS ONLY
UTILITIES ENGINEERING SEC. PHONE: (919) 707-6690 FAX: (919) 250-4151	

**UTILITY CONSTRUCTION**  
 DOCUMENT NOT CONSIDERED FINAL UNLESS ALL SIGNATURES COMPLETED  
 Weston Sampson  
 WSE of North Carolina, PC  
 598 East Chatham Street Suite 137 Cary, NC 27511  
 Phone: 919.297.0220 NC License: C-4647 Fax: 919.297.0221

- NOTES:
1. PROPOSED DOWN AND UNDER RELOCATION OF UTILITY. REFER TO DETAIL ON SHEET UC-3B.
  2. OPEN TRENCH CONSTRUCTION SHALL PROVIDE 3 FEET MINIMUM COVER TO TOP OF PIPE.
  3. VALVE SHALL BE INSTALLED A MINIMUM OF 3 FEET OUTSIDE OF THE CURB AND GUTTER.
  4. PROPOSED WATER MAIN PLUG. REFER TO DETAIL ON SHEET UC-3J.
  5. REFER TO WATER MAIN DETAILS ON SHEET UC-3E.
  6. REFER TO WATER MAIN DETAILS ON SHEET UC-3J.
- REFER TO SHEET UC-15 FOR W1 PROFILE  
 REFER TO SHEET UC-15 FOR W4 PROFILE

MATCH LINE -LI- STA 60+00.00

MATCH LINE -LI- STA 73+50.00 SEE SHEET UC-13