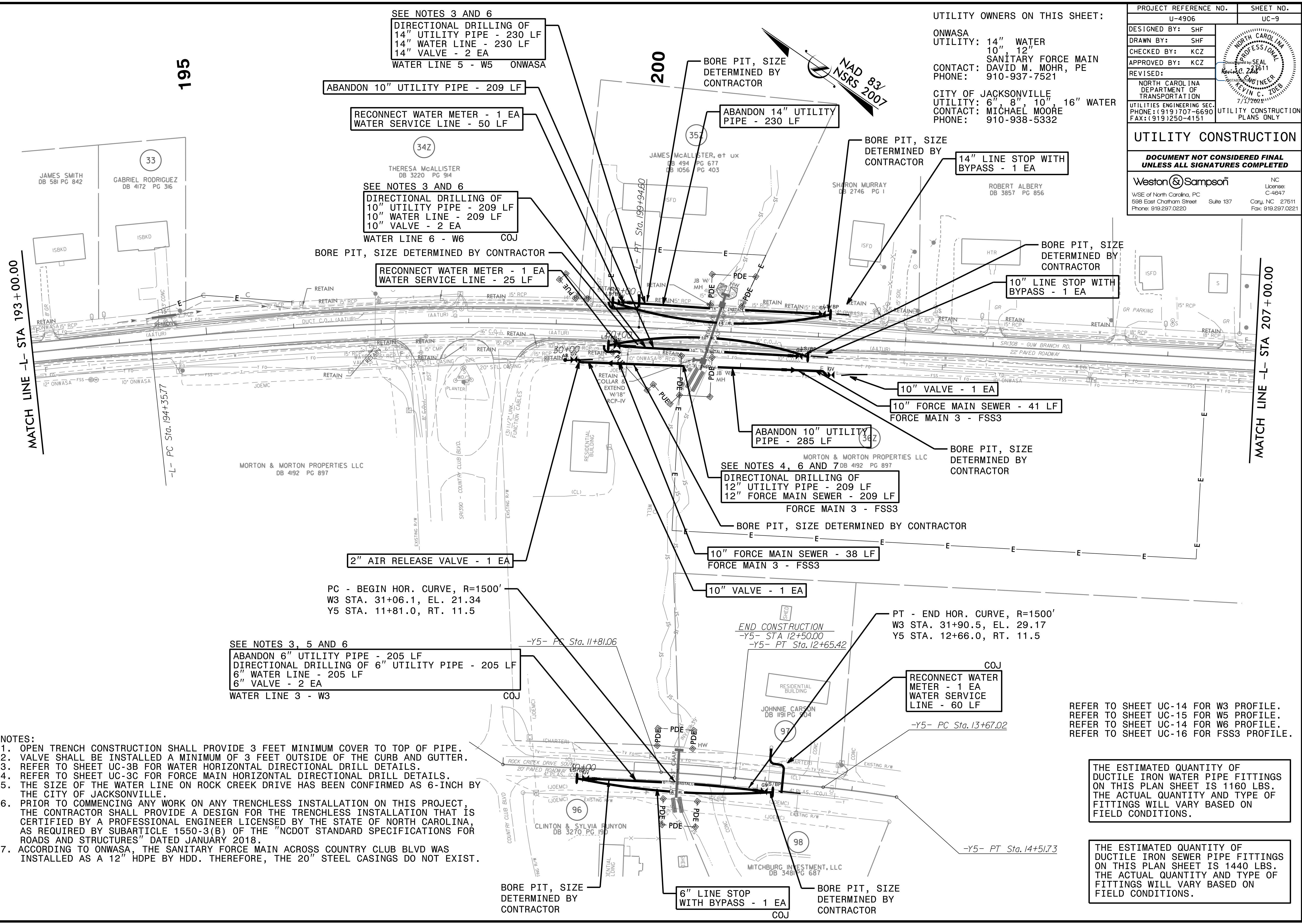


6/14/2021 10:59:52 AM \\wse\local\Projects\NCS\CarrollServer\Engineering\UC\Proj\U4906\U4906-ut_rdy\6_UC09_psh.dgn

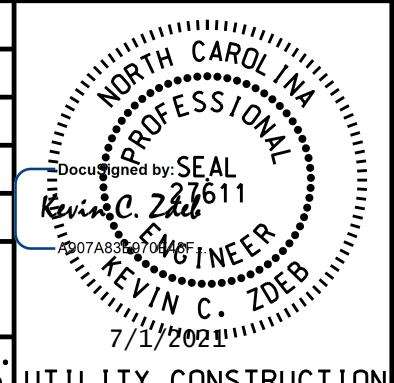
8/17/99



UTILITY OWNERS ON THIS SHEET:

ONWASA
 UTILITY: 14" WATER
 10" 12" SANITARY FORCE MAIN
 CONTACT: DAVID M. MOHR, PE
 PHONE: 910-937-7521

CITY OF JACKSONVILLE
 UTILITY: 6" 8" 10" 16" WATER
 CONTACT: MICHAEL MOORE
 PHONE: 910-938-5332

PROJECT REFERENCE NO.	SHEET NO.
U-4906	UC-9
DESIGNED BY: SHF	
DRAWN BY: SHF	
CHECKED BY: KCZ	
APPROVED BY: KCZ	
REVISED:	
NORTH CAROLINA DEPARTMENT OF TRANSPORTATION UTILITIES ENGINEERING SEC. PHONE: (919) 707-6690 FAX: (919) 250-4151	
UTILITY CONSTRUCTION PLANS ONLY	

UTILITY CONSTRUCTION

DOCUMENT NOT CONSIDERED FINAL UNLESS ALL SIGNATURES COMPLETED

Weston Sampson
 WSE of North Carolina, PC
 598 East Chatham Street Suite 137
 Phone: 919.297.0220

NC License: C-4647
 Cary, NC 27511
 Fax: 919.297.0221

- NOTES:**
1. OPEN TRENCH CONSTRUCTION SHALL PROVIDE 3 FEET MINIMUM COVER TO TOP OF PIPE.
 2. VALVE SHALL BE INSTALLED A MINIMUM OF 3 FEET OUTSIDE OF THE CURB AND GUTTER.
 3. REFER TO SHEET UC-3B FOR WATER HORIZONTAL DIRECTIONAL DRILL DETAILS.
 4. REFER TO SHEET UC-3C FOR FORCE MAIN HORIZONTAL DIRECTIONAL DRILL DETAILS.
 5. THE SIZE OF THE WATER LINE ON ROCK CREEK DRIVE HAS BEEN CONFIRMED AS 6-INCH BY THE CITY OF JACKSONVILLE.
 6. PRIOR TO COMMENCING ANY WORK ON ANY TRENCHLESS INSTALLATION ON THIS PROJECT, THE CONTRACTOR SHALL PROVIDE A DESIGN FOR THE TRENCHLESS INSTALLATION THAT IS CERTIFIED BY A PROFESSIONAL ENGINEER LICENSED BY THE STATE OF NORTH CAROLINA, AS REQUIRED BY SUBARTICLE 1550-3(B) OF THE "NCDOT STANDARD SPECIFICATIONS FOR ROADS AND STRUCTURES" DATED JANUARY 2018.
 7. ACCORDING TO ONWASA, THE SANITARY FORCE MAIN ACROSS COUNTRY CLUB BLVD WAS INSTALLED AS A 12" HDPE BY HDD. THEREFORE, THE 20" STEEL CASINGS DO NOT EXIST.

REFER TO SHEET UC-14 FOR W5 PROFILE.
 REFER TO SHEET UC-15 FOR W6 PROFILE.
 REFER TO SHEET UC-14 FOR W6 PROFILE.
 REFER TO SHEET UC-16 FOR FSS3 PROFILE.

THE ESTIMATED QUANTITY OF DUCTILE IRON WATER PIPE FITTINGS ON THIS PLAN SHEET IS 1160 LBS. THE ACTUAL QUANTITY AND TYPE OF FITTINGS WILL VARY BASED ON FIELD CONDITIONS.

THE ESTIMATED QUANTITY OF DUCTILE IRON SEWER PIPE FITTINGS ON THIS PLAN SHEET IS 1440 LBS. THE ACTUAL QUANTITY AND TYPE OF FITTINGS WILL VARY BASED ON FIELD CONDITIONS.