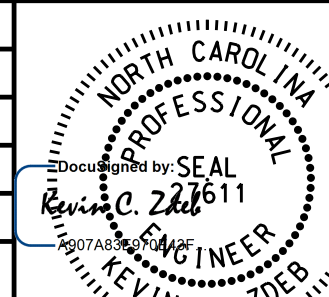


PROJECT REFERENCE NO. U-4906	SHEET NO. UC-7
DESIGNED BY: SHF	
DRAWN BY: SHF	
CHECKED BY: KCZ	
APPROVED BY: KCZ	
REVISED:	
NORTH CAROLINA DEPARTMENT OF TRANSPORTATION 7/1/2022 KEVIN C. ZOLB ENGINEER	
UTILITIES ENGINEERING SEC. PHONE: (919) 707-6690 FAX: (919) 250-4151	UTILITY CONSTRUCTION PLANS ONLY

UTILITY CONSTRUCTION

**DOCUMENT NOT CONSIDERED FINAL
UNLESS ALL SIGNATURES COMPLETED**

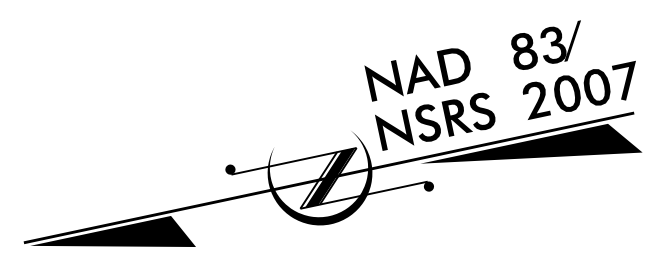
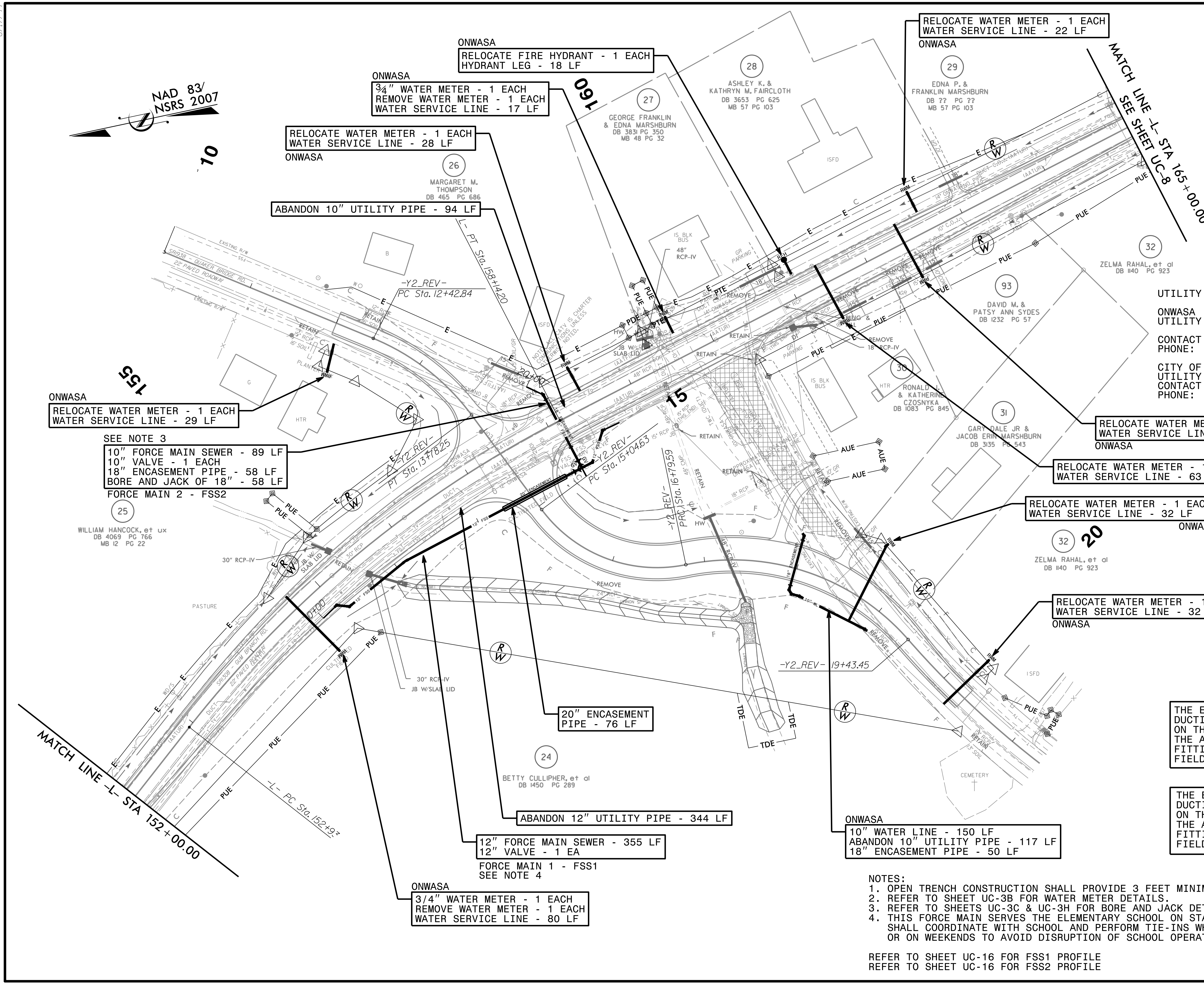
Weston Sampson
 WSE of North Carolina, PC
 598 East Chatham Street Suite 137
 Phone: 919.297.0220

NC License: C-4647
 Cary, NC 27511
 Fax: 919.297.0221

UTILITY OWNERS ON THIS SHEET:

ONWASA
 UTILITY: 8", 10", 14" WATER
 10", 12" SANITARY FORCE MAIN
 CONTACT: DAVID M. MOHR, PE
 PHONE: 910-937-7521

CITY OF JACKSONVILLE
 UTILITY: 10", 12" WATER
 CONTACT: MICHAEL MOORE
 PHONE: 910-938-5332



ONWASA
 RELOCATE WATER METER - 1 EACH
 WATER SERVICE LINE - 29 LF

SEE NOTE 3
 10" FORCE MAIN SEWER - 89 LF
 10" VALVE - 1 EACH
 18" ENCASEMENT PIPE - 58 LF
 BORE AND JACK OF 18" - 58 LF
 FORCE MAIN 2 - FSS2

WILLIAM HANCOCK, et ux
 DB 4069 PG 766
 MB 12 PG 22

ONWASA
 RELOCATE FIRE HYDRANT - 1 EACH
 HYDRANT LEG - 18 LF

ONWASA
 3/4" WATER METER - 1 EACH
 REMOVE WATER METER - 1 EACH
 WATER SERVICE LINE - 17 LF

ONWASA
 RELOCATE WATER METER - 1 EACH
 WATER SERVICE LINE - 28 LF

ABANDON 10" UTILITY PIPE - 94 LF

MARGARET M. THOMPSON
 DB 465 PG 686

GEORGE FRANKLIN & EDNA MARSHBURN
 DB 3831 PG 350
 MB 48 PG 32

ASHLEY K. & KATHRYN M. FAIRCLOTH
 DB 3653 PG 625
 MB 57 PG 103

ONWASA
 RELOCATE WATER METER - 1 EACH
 WATER SERVICE LINE - 22 LF

EDNA P. & FRANKLIN MARSHBURN
 DB ?? PG ??
 MB 57 PG 103

MATCH LINE - L- STA 165+00.00
 SEE SHEET UC-8

MATCH LINE - L- STA 152+00.00

20" ENCASEMENT PIPE - 76 LF

BETTY CULLIPHER, et al
 DB 1450 PG 289

ABANDON 12" UTILITY PIPE - 344 LF

12" FORCE MAIN SEWER - 355 LF
 12" VALVE - 1 EA
 FORCE MAIN 1 - FSS1
 SEE NOTE 4

ONWASA
 3/4" WATER METER - 1 EACH
 REMOVE WATER METER - 1 EACH
 WATER SERVICE LINE - 80 LF

ONWASA
 RELOCATE WATER METER - 1 EACH
 WATER SERVICE LINE - 63 LF

ONWASA
 RELOCATE WATER METER - 1 EACH
 WATER SERVICE LINE - 63 LF

ONWASA
 RELOCATE WATER METER - 1 EACH
 WATER SERVICE LINE - 32 LF

ZELMA RAHAL, et al
 DB 1140 PG 923

ONWASA
 RELOCATE WATER METER - 1 EACH
 WATER SERVICE LINE - 32 LF

ONWASA
 10" WATER LINE - 150 LF
 ABANDON 10" UTILITY PIPE - 117 LF
 18" ENCASEMENT PIPE - 50 LF

- NOTES:**
1. OPEN TRENCH CONSTRUCTION SHALL PROVIDE 3 FEET MINIMUM COVER TO TOP OF PIPE.
 2. REFER TO SHEET UC-3B FOR WATER METER DETAILS.
 3. REFER TO SHEETS UC-3C & UC-3H FOR BORE AND JACK DETAILS.
 4. THIS FORCE MAIN SERVES THE ELEMENTARY SCHOOL ON STATESIDE BLVD. CONTRACTOR SHALL COORDINATE WITH SCHOOL AND PERFORM TIE-INS WHEN SCHOOL IS NOT IN SESSION OR ON WEEKENDS TO AVOID DISRUPTION OF SCHOOL OPERATIONS.

REFER TO SHEET UC-16 FOR FSS1 PROFILE
 REFER TO SHEET UC-16 FOR FSS2 PROFILE

THE ESTIMATED QUANTITY OF DUCTILE IRON WATER PIPE FITTINGS ON THIS PLAN SHEET IS 785 LBS. THE ACTUAL QUANTITY AND TYPE OF FITTINGS WILL VARY BASED ON FIELD CONDITIONS.

THE ESTIMATED QUANTITY OF DUCTILE IRON SEWER PIPE FITTINGS ON THIS PLAN SHEET IS 1630 LBS. THE ACTUAL QUANTITY AND TYPE OF FITTINGS WILL VARY BASED ON FIELD CONDITIONS.

5/26/2021 10:54:03 AM local\\WSE\Projects\NCA_Cary\oldServer\Engineer\Jobs\0696\026\12100 U-4906\Utilities\Engineering\UC\Proj\U4906_ut_rdy\3_UC07_psh.dgn
 8/17/99