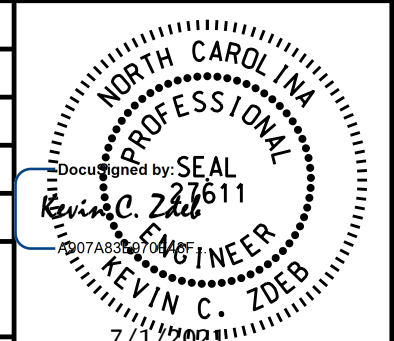


PROJECT REFERENCE NO.	SHEET NO.
U-4906	UC-6
DESIGNED BY: SHF	
DRAWN BY: SHF	
CHECKED BY: KCZ	
APPROVED BY: KCZ	
REVISED:	
NORTH CAROLINA DEPARTMENT OF TRANSPORTATION UTILITIES ENGINEERING SEC. PHONE: (919) 707-6690 FAX: (919) 250-4151	
UTILITY CONSTRUCTION PLANS ONLY	
UTILITY CONSTRUCTION DOCUMENT NOT CONSIDERED FINAL UNLESS ALL SIGNATURES COMPLETED	
Weston Sampson WSE of North Carolina, PC 598 East Chatham Street Suite 137 Phone: 919.297.0220	
NC License: C-4647 Cary, NC 27511 Fax: 919.297.0221	

UTILITY OWNERS ON THIS SHEET:

ONWASA
 UTILITY: 6" 10" WATER
 12" SANITARY
 FORCE MAIN
 CONTACT: DAVID M. MOHR, PE
 PHONE: 910-937-7521

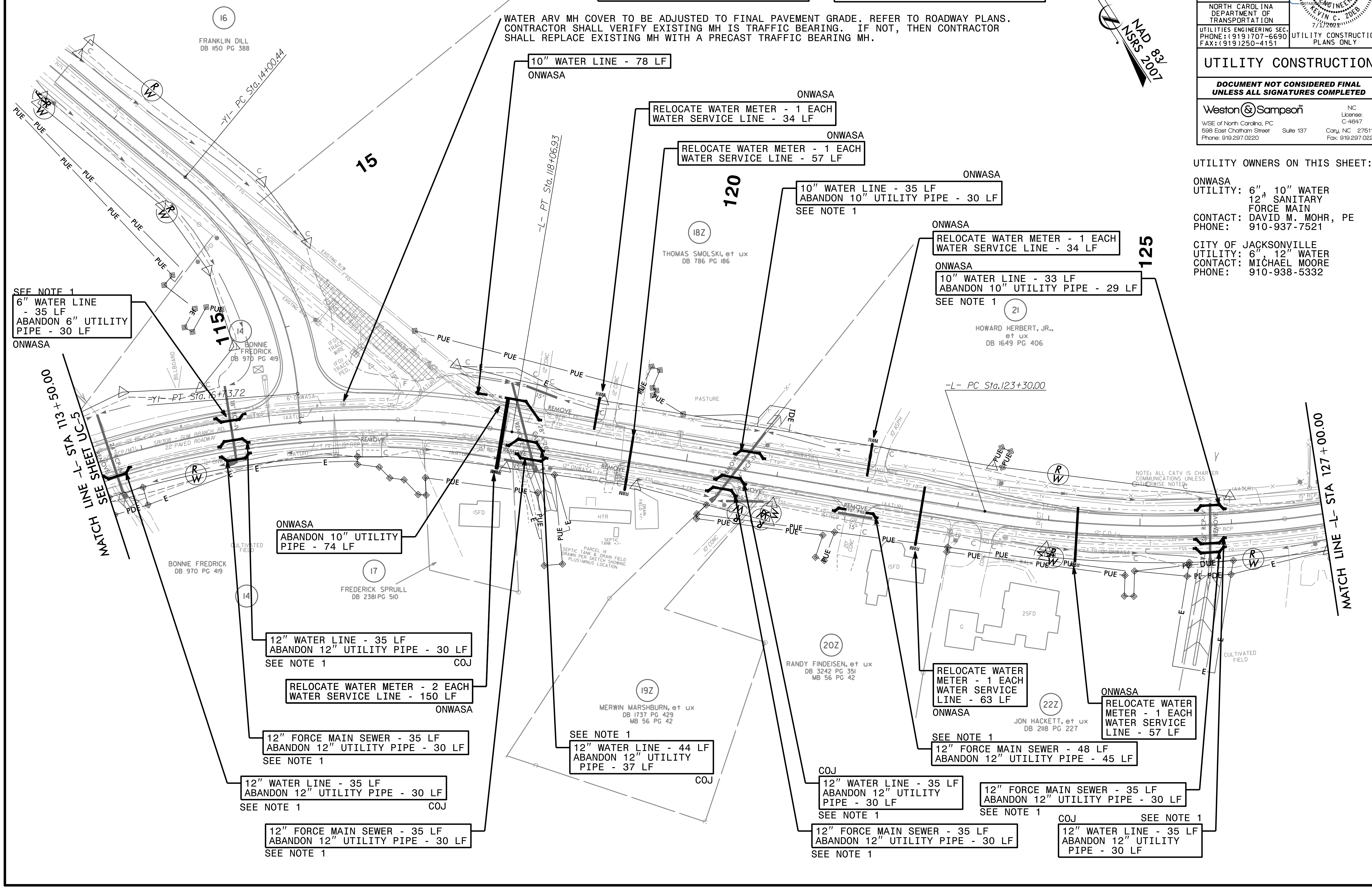
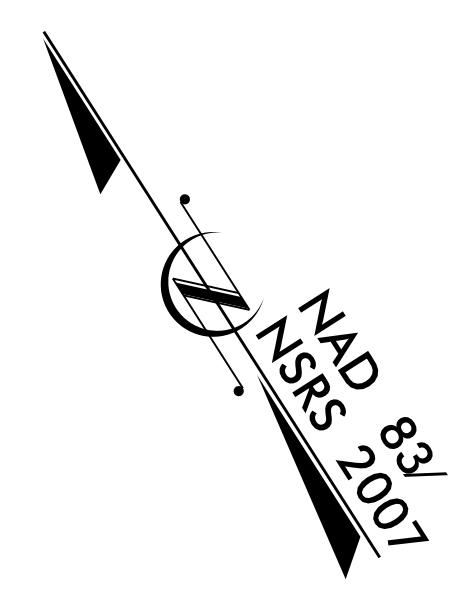
CITY OF JACKSONVILLE
 UTILITY: 6" 12" WATER
 CONTACT: MICHAEL MOORE
 PHONE: 910-938-5332

NOTES:
 1. PROPOSED DOWN AND UNDER RELOCATION OF UTILITY. REFER TO DETAIL ON SHEET UC-3B.
 2. OPEN TRENCH CONSTRUCTION SHALL PROVIDE 3 FEET MINIMUM COVER TO TOP OF PIPE.
 3. REFER TO WATER METER DETAILS ON SHEET UC-3E.

THE ESTIMATED QUANTITY OF DUCTILE IRON WATER PIPE FITTINGS ON THIS PLAN SHEET IS 6310 LBS. THE ACTUAL QUANTITY AND TYPE OF FITTINGS WILL VARY BASED ON FIELD CONDITIONS.

THE ESTIMATED QUANTITY OF DUCTILE IRON SEWER PIPE FITTINGS ON THIS PLAN SHEET IS 4300 LBS. THE ACTUAL QUANTITY AND TYPE OF FITTINGS WILL VARY BASED ON FIELD CONDITIONS.

WATER ARV MH COVER TO BE ADJUSTED TO FINAL PAVEMENT GRADE. REFER TO ROADWAY PLANS. CONTRACTOR SHALL VERIFY EXISTING MH IS TRAFFIC BEARING. IF NOT, THEN CONTRACTOR SHALL REPLACE EXISTING MH WITH A PRECAST TRAFFIC BEARING MH.



SEE NOTE 1
 6" WATER LINE - 35 LF
 ABANDON 6" UTILITY PIPE - 30 LF
 ONWASA

10" WATER LINE - 78 LF
 ONWASA

RELOCATE WATER METER - 1 EACH
 WATER SERVICE LINE - 34 LF
 ONWASA

RELOCATE WATER METER - 1 EACH
 WATER SERVICE LINE - 57 LF
 ONWASA

10" WATER LINE - 35 LF
 ABANDON 10" UTILITY PIPE - 30 LF
 SEE NOTE 1
 ONWASA

RELOCATE WATER METER - 1 EACH
 WATER SERVICE LINE - 34 LF
 ONWASA

10" WATER LINE - 33 LF
 ABANDON 10" UTILITY PIPE - 29 LF
 SEE NOTE 1
 ONWASA

ONWASA
 ABANDON 10" UTILITY PIPE - 74 LF

12" WATER LINE - 35 LF
 ABANDON 12" UTILITY PIPE - 30 LF
 SEE NOTE 1
 COJ

RELOCATE WATER METER - 2 EACH
 WATER SERVICE LINE - 150 LF
 ONWASA

12" FORCE MAIN SEWER - 35 LF
 ABANDON 12" UTILITY PIPE - 30 LF
 SEE NOTE 1

12" WATER LINE - 35 LF
 ABANDON 12" UTILITY PIPE - 30 LF
 SEE NOTE 1
 COJ

12" FORCE MAIN SEWER - 35 LF
 ABANDON 12" UTILITY PIPE - 30 LF
 SEE NOTE 1

SEE NOTE 1
 12" WATER LINE - 44 LF
 ABANDON 12" UTILITY PIPE - 37 LF
 COJ

12" WATER LINE - 35 LF
 ABANDON 12" UTILITY PIPE - 30 LF
 SEE NOTE 1
 COJ

12" FORCE MAIN SEWER - 35 LF
 ABANDON 12" UTILITY PIPE - 30 LF
 SEE NOTE 1

RELOCATE WATER METER - 1 EACH
 WATER SERVICE LINE - 63 LF
 ONWASA

SEE NOTE 1
 12" FORCE MAIN SEWER - 48 LF
 ABANDON 12" UTILITY PIPE - 45 LF

12" FORCE MAIN SEWER - 35 LF
 ABANDON 12" UTILITY PIPE - 30 LF
 SEE NOTE 1

12" WATER LINE - 35 LF
 ABANDON 12" UTILITY PIPE - 30 LF
 SEE NOTE 1
 COJ

ONWASA
 RELOCATE WATER METER - 1 EACH
 WATER SERVICE LINE - 57 LF

5/26/2021 \\wse03\local\Projects\NCA_Carry\oldServer\Engineer\JOBS\0696\026\12100_U-4906\Utilities\Engineering\UC\Proj\U4906_ut_rdy10_UC06_psh.dgn

8/17/99