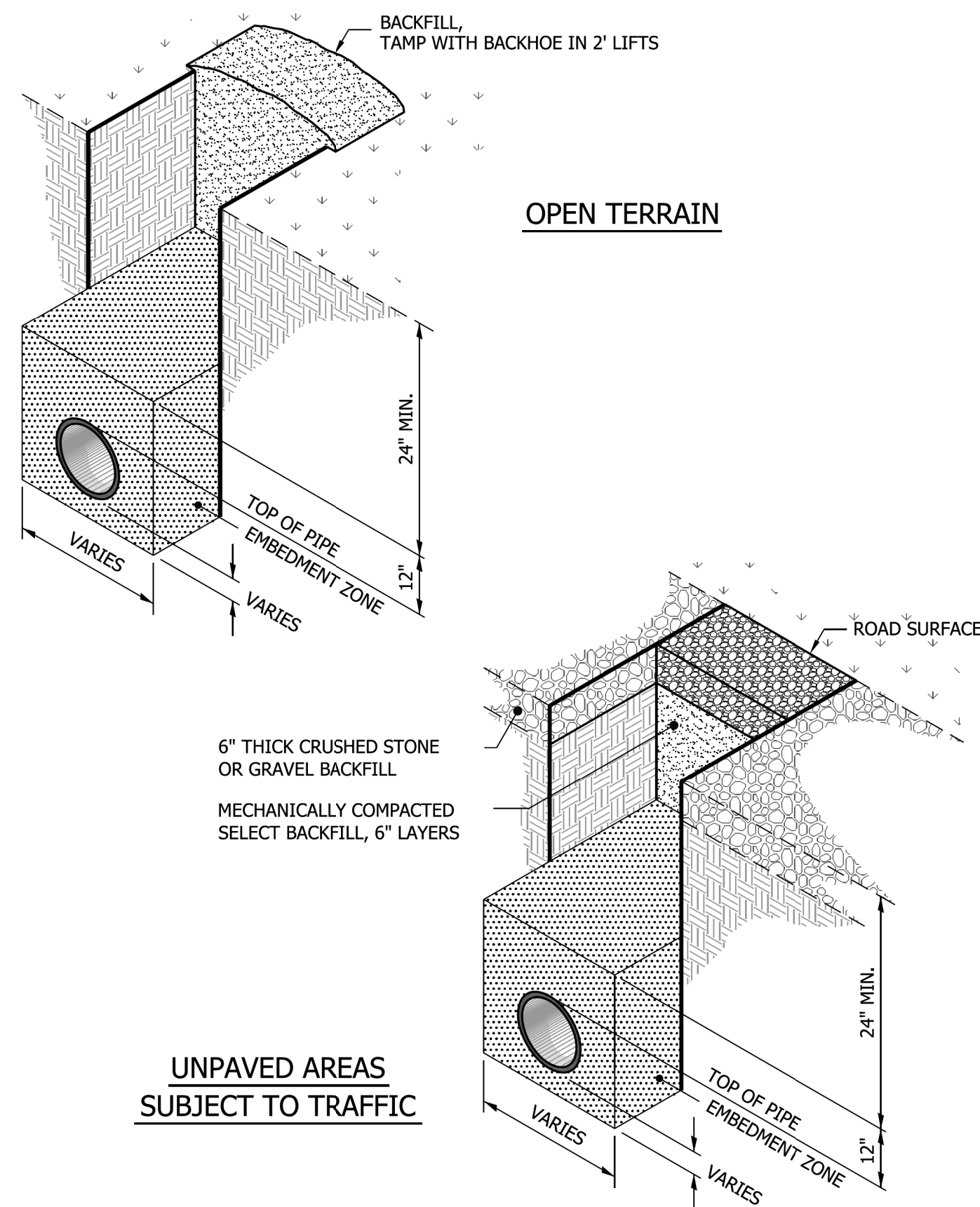
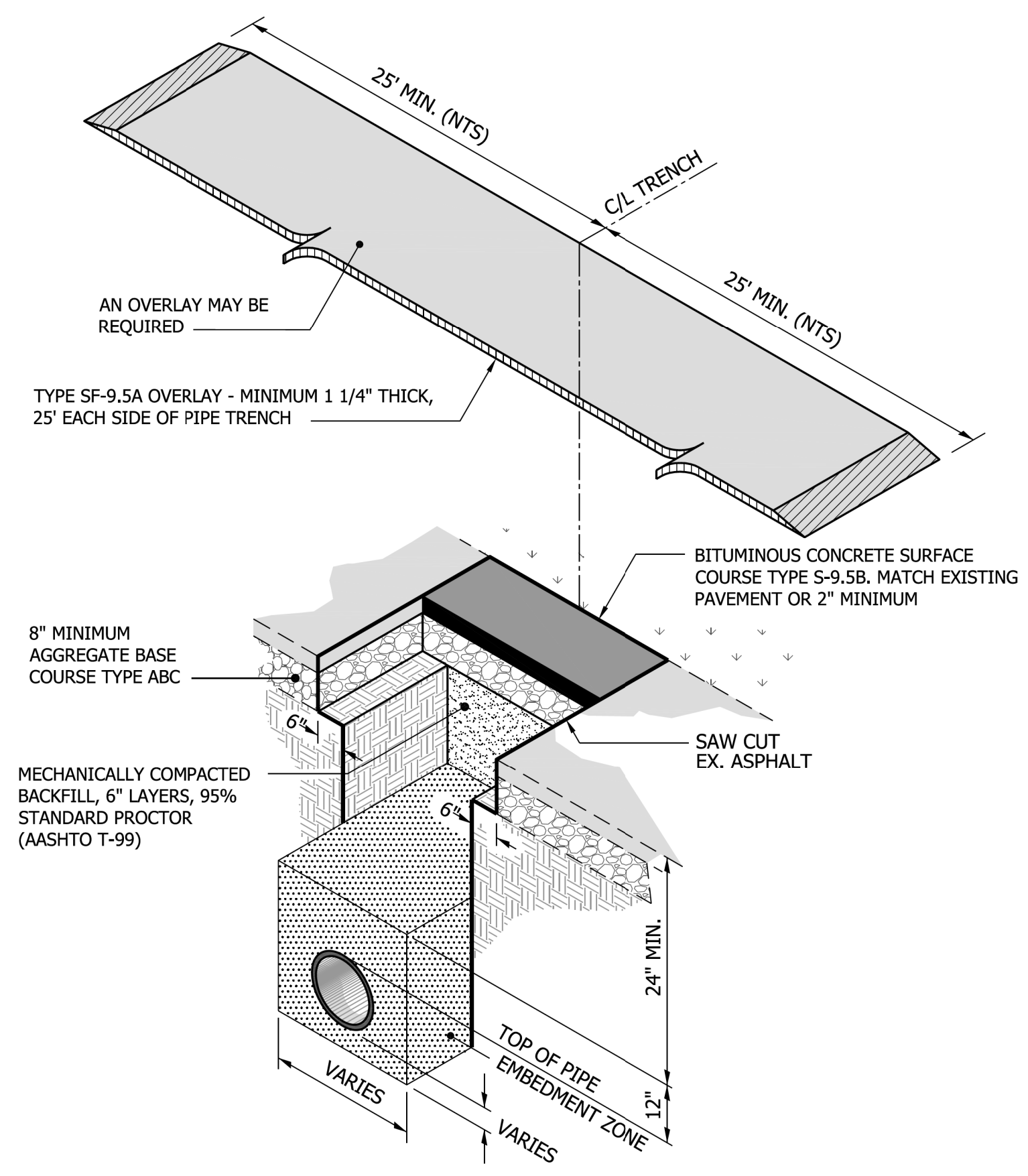


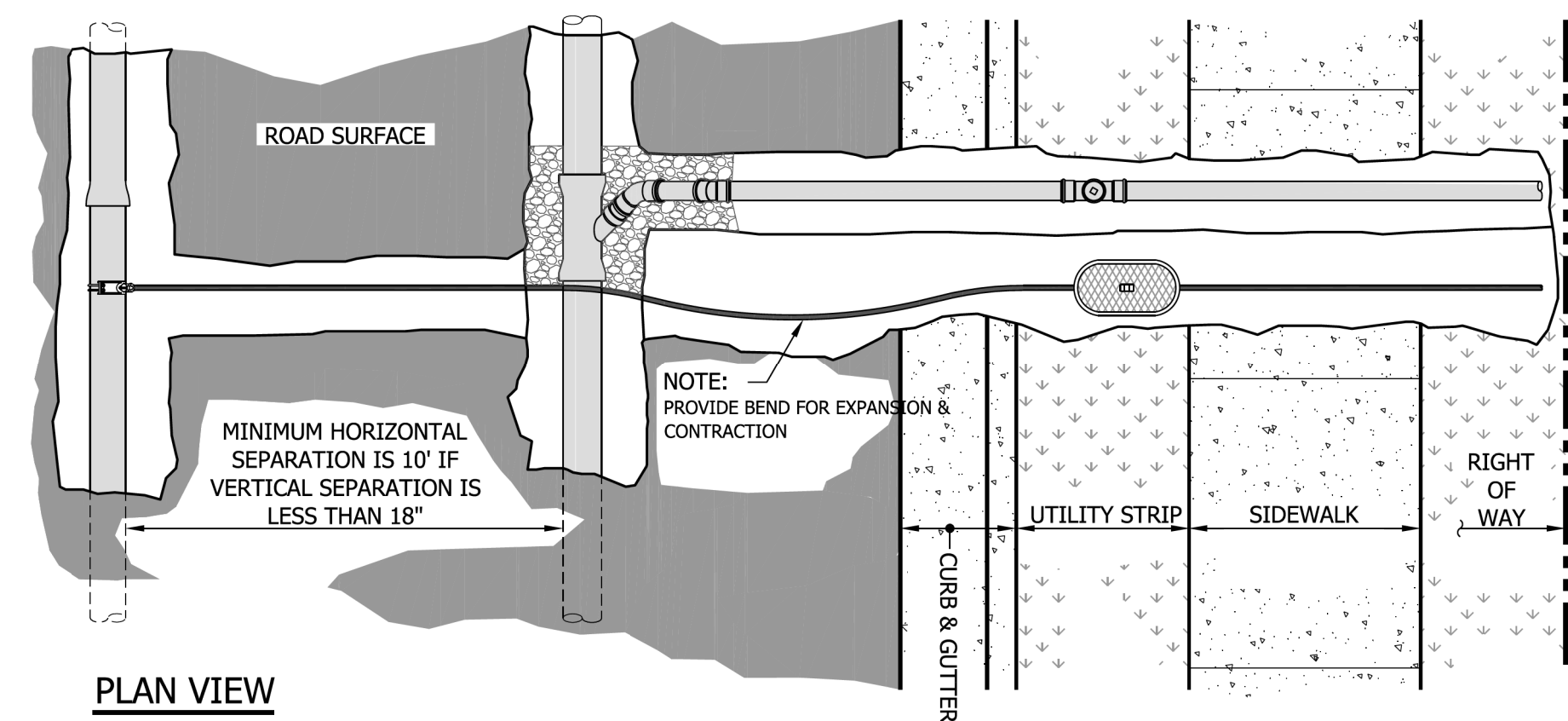
8/17/99  
 4/15/2020  
 \\ws03\local\WSE\Projects\NC\_CarrollServer\Engineer\Jobs\0696\026\12100 U-4906\Utilities\Engineering\UC\Proj\U4906\_ut\_dtl\UC03G\_psh.dgn  
 13:51 PM



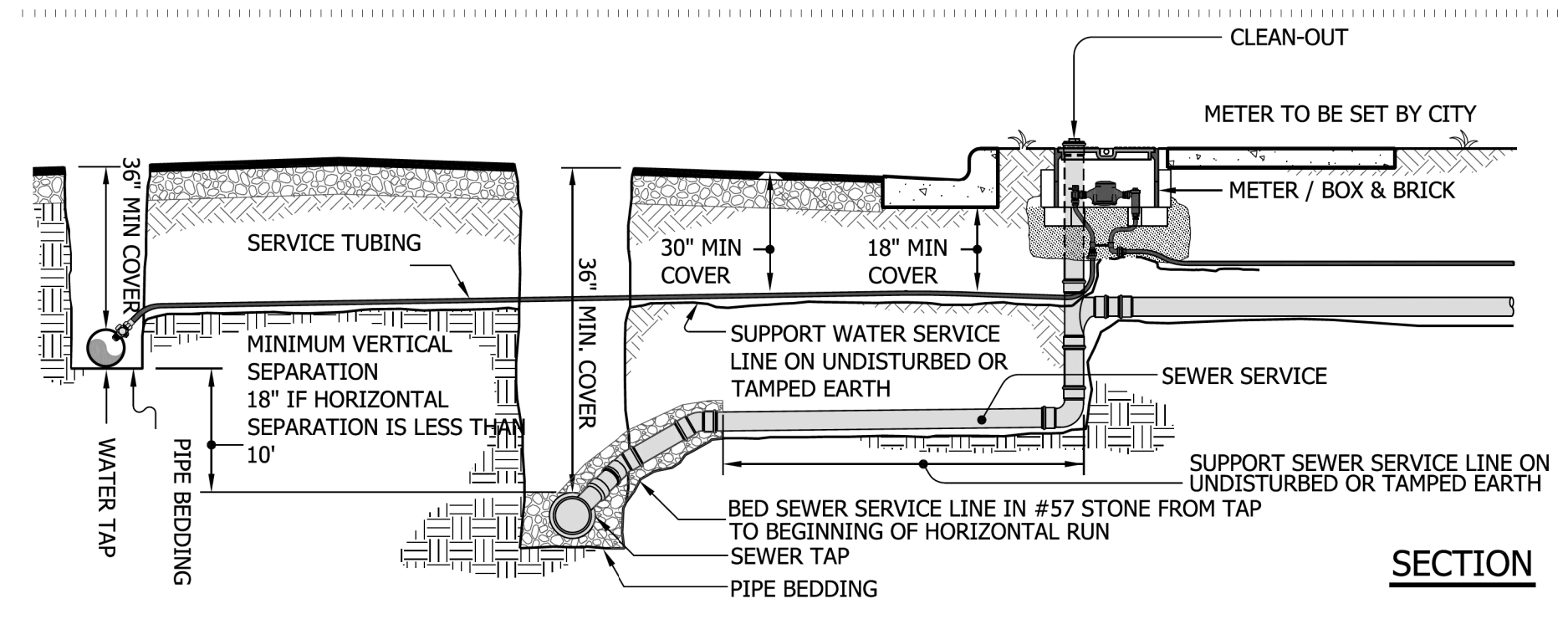
TYPICAL TRENCH BACKFILL AND SURFACE REPAIR DETAILS  
NOT TO SCALE



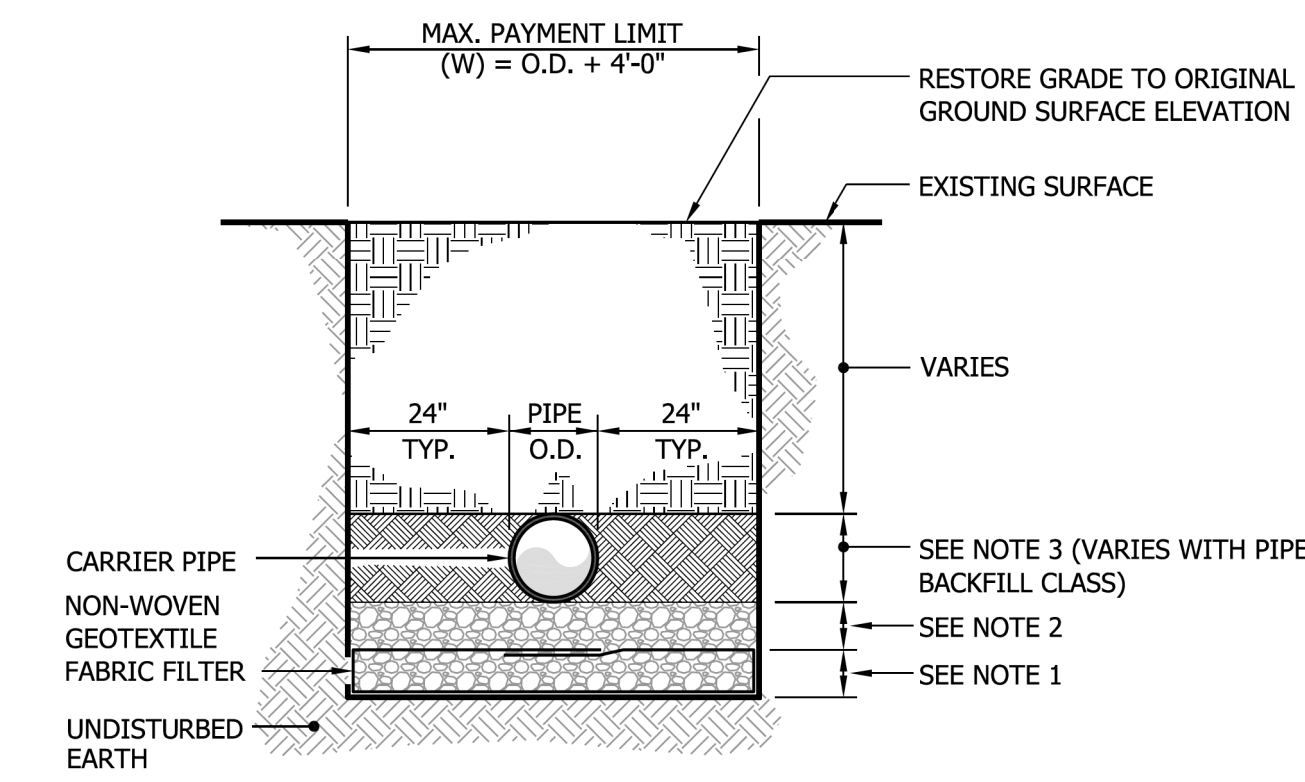
TYPICAL TRENCH BACKFILL AND SURFACE REPAIR DETAILS  
NOT TO SCALE



PLAN VIEW



TYPICAL RESIDENTIAL WATER & SEWER SERVICE SCHEMATIC  
NOT TO SCALE



- NOTES:
- 8" DEEP NO. 57 STONE OR EQUAL WRAPPED IN NON-WOVEN GEOTEXTILE FILTER FABRIC LIGHTLY COMPACTED. OVERLAP FABRIC BY MINIMUM ONE PIPE O.D.
  - 4" DEEP NO. 57 STONE OR EQUAL LIGHTLY COMPACTED PIPE BEDDING.
  - GENERAL BACKFILL COMPACTED TO 90% STANDARD PROCTOR DENSITY IN 6" MAXIMUM LIFTS.

UNSUITABLE SUBGRADE TRENCH DETAIL - TYPE A  
NOT TO SCALE

PROJECT REFERENCE NO. U-4906	SHEET NO. UC-3G
DESIGNED BY: SHF	
DRAWN BY: SHF	
CHECKED BY: KCZ	
APPROVED BY: KCZ	
REVISED:	
NORTH CAROLINA DEPARTMENT OF TRANSPORTATION	UTILITY CONSTRUCTION PLANS ONLY
UTILITIES ENGINEERING SEC. PHONE: (919) 707-6690 FAX: (919) 250-4151	
<b>UTILITY CONSTRUCTION</b>	
<b>DOCUMENT NOT CONSIDERED FINAL UNLESS ALL SIGNATURES COMPLETED</b>	
Weston & Sampson WSE of North Carolina, PC 598 East Chatham Street Suite 137 Cary, NC 27511 Phone: 919.297.0220 NC License: C-4647 Fax: 919.297.0221	

DETAILS APPLY TO CITY OF JACKSONVILLE FACILITIES