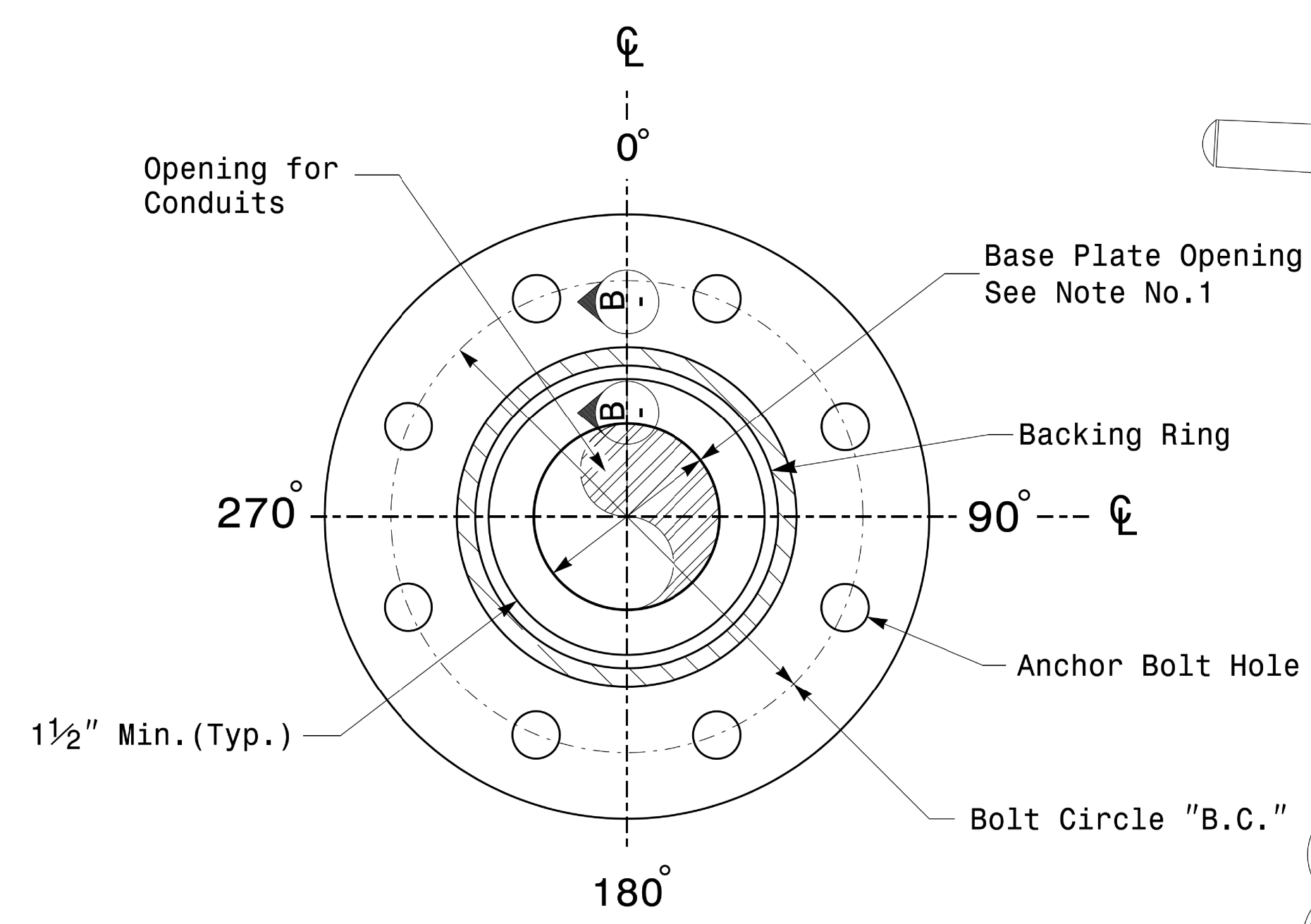
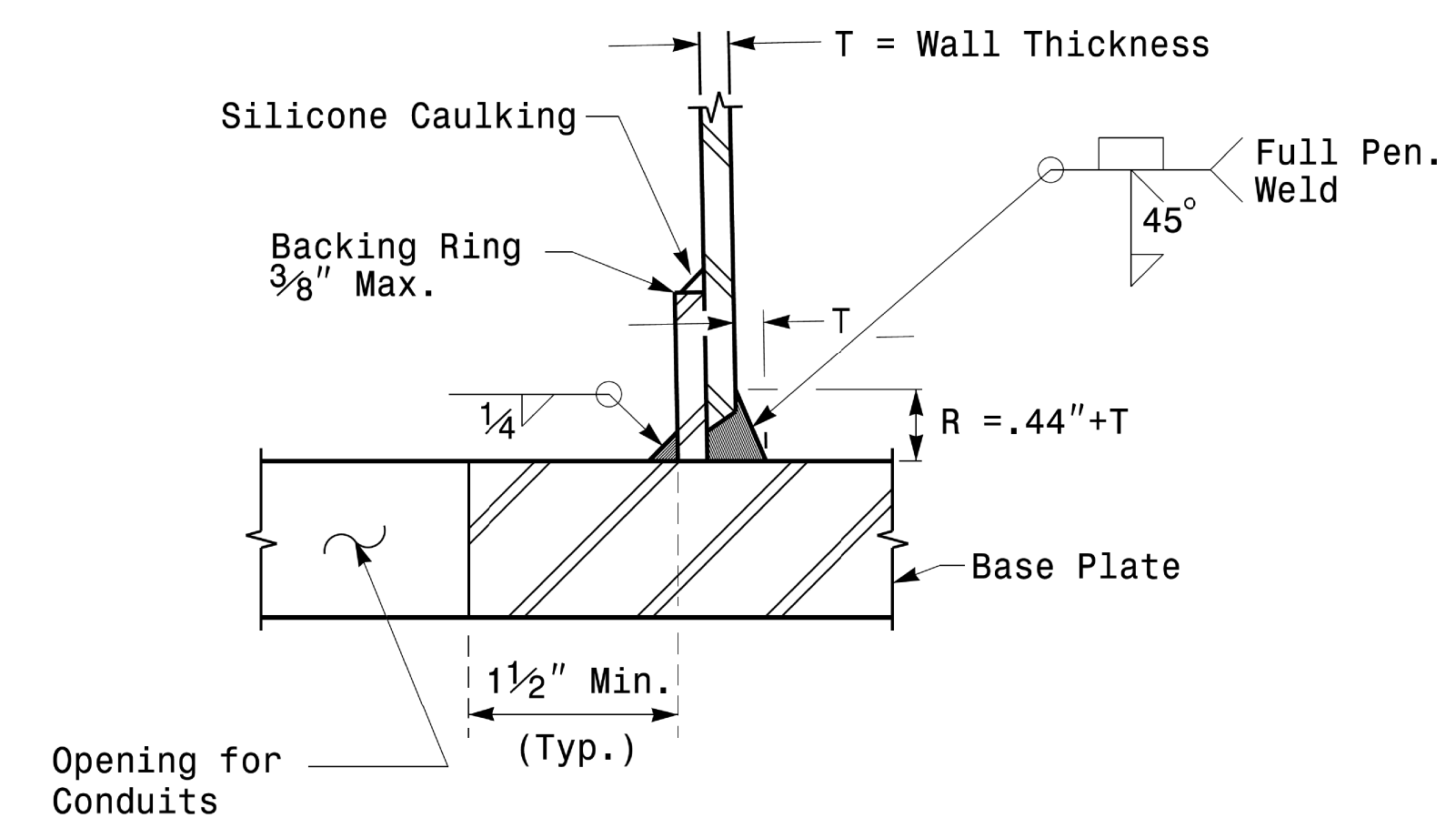


PROJECT ID. NO.	SHEET NO.
U - 4906	Sig.M4

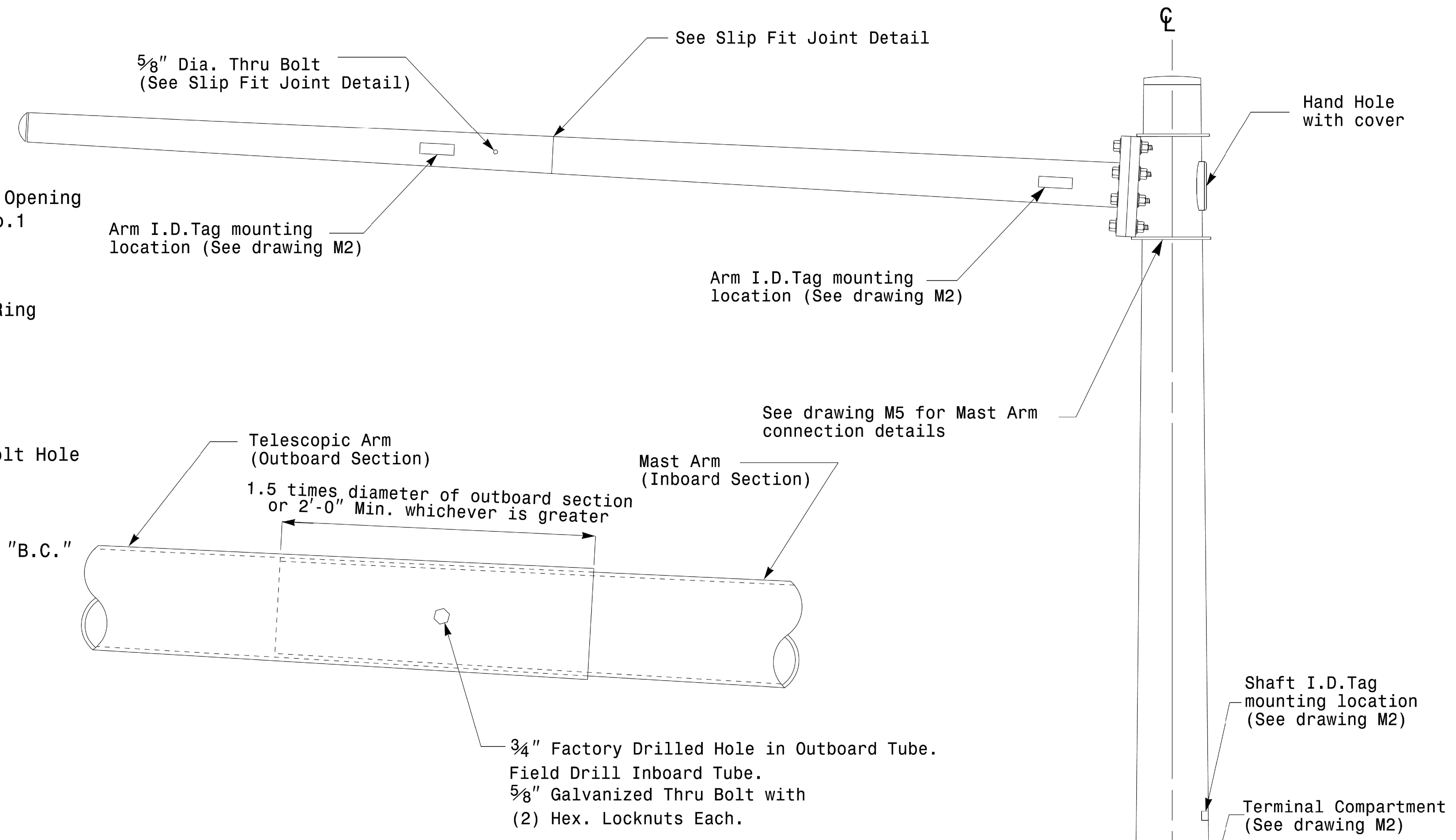
Note:  
 1. Opening in pole base plate shall be equal to pole base inside diameter minus 3 1/2" but shall not be less than 8 1/2".



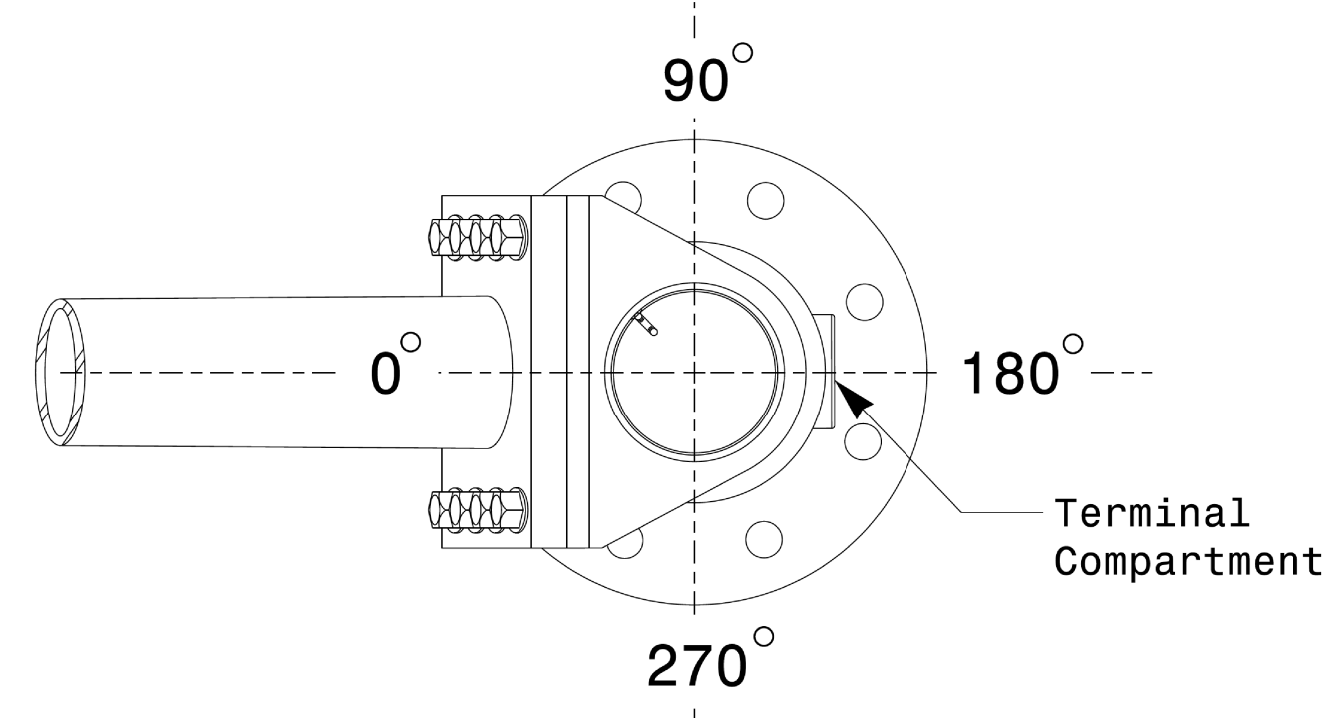
**Section A-A**  
**Pole Base Plate Details**



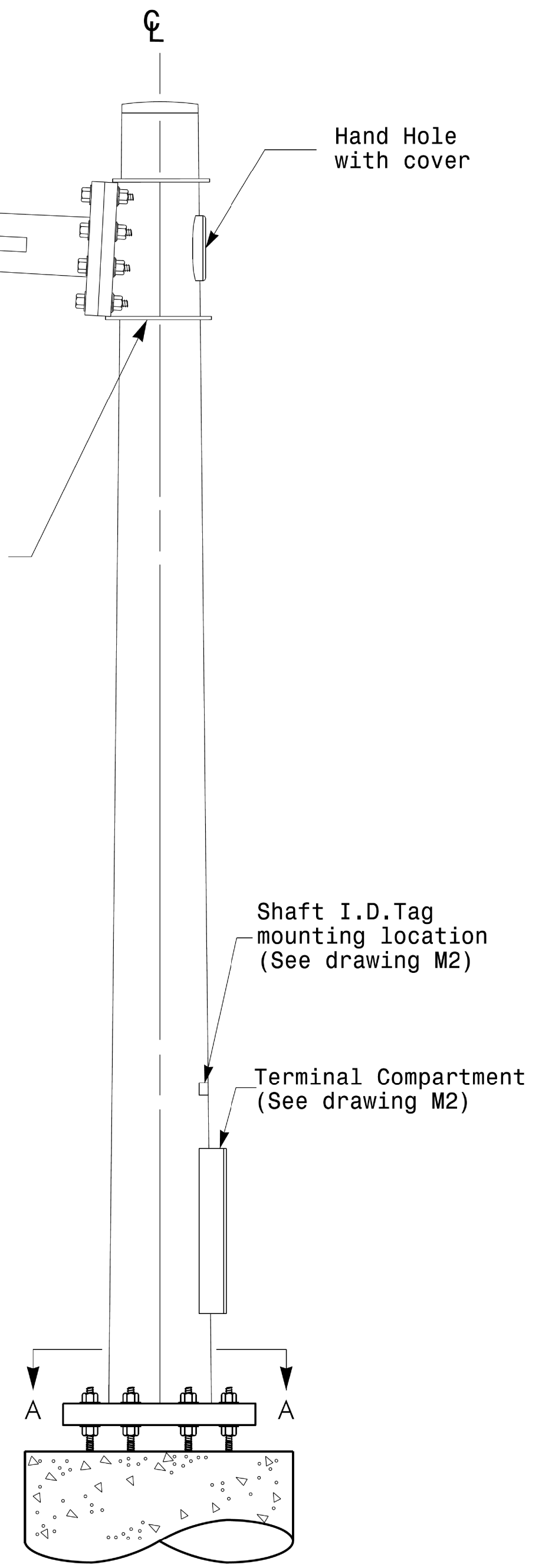
**Section B-B**  
 (Pole Attachment to Base Plate)  
**Full-Penetration Groove Weld Detail**



**Slip Fit Joint Detail for Mast Arm**



**Mast Arm Radial Orientation**



**Mast Arm Pole**

**Fabrication Details - Mast Arm Poles**

11-OCT-2017 08:33 S:\MIS\SUM\TIS Signal\Sig\Design\Section\Eastern Region\MIS\Sig\Design\Section\Signal Design Section\Typical Fabrication Details\Mast Arm Poles.dgn

	Typical Fabrication Details For Mast Arm Poles		SEAL 
	PLAN DATE: OCTOBER 2017 PREPARED BY: N. BITTING	DESIGNED BY: K.C. DURIGON REVIEWED BY: D.C. SARKAR	
SCALE: 0 NA NONE			10/11/2017 DATE