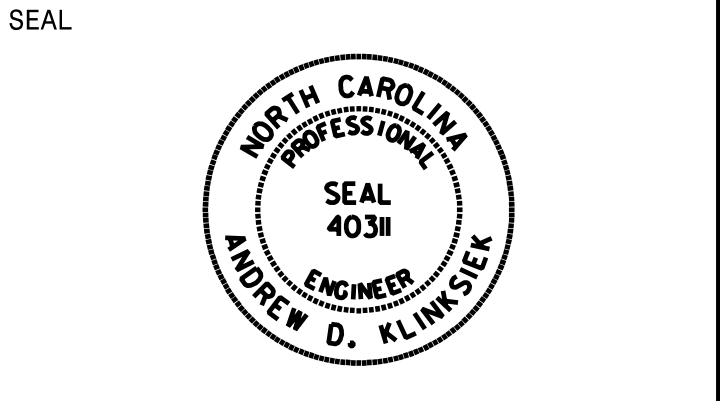


APPROVED: *Andrew D. Klincksiek*
DocuSigned by:
 Andrew D. Klincksiek
 E3078FB4596E44B...

DATE: 6/30/2021



**DOCUMENT NOT CONSIDERED FINAL
 UNLESS ALL SIGNATURES COMPLETED**

SIGN NUMBER: 301
 TYPE: D
 QUANTITY: 1
 SIGN WIDTH: 7'-0"
 HEIGHT: 2'-6"
 TOTAL AREA: 17.5 Sq.Ft.
 BORDER TYPE: FLUSH
 RECESS: 0"
 WIDTH: 0.75"
 RADII: 3"
 NO. Z BARS: N/A
 LENGTH: N/A

BACKG COLOR: Brown
 COPY COLOR: White

SYMBOL	X	Y	WID	HT
Type D Arrow	69.5	12	6	9

MAT'L: 0.125" ALUMINUM

DESIGN BY: NKV
 PROJECT ID: U-4906
 CHECKED BY: TRT/ADK
 DIV: 03
 DATE: November 2018



- NOTES:
- Legend and border shall be direct applied Grade C reflective sheeting.
 - Arrows shall be Grade C reflective sheeting on 0.032" aluminum and demountable.
 - Background shall be Grade C reflective sheeting.

LETTER POSITIONS

Letter spacings are to start of next letter

	O	n	s	i	o	w	C	o	u	n	t	y	Series/Size					
	5.5	5.5	4.3	3.6	1.9	4.1	6.8	5.4	5	4.6	4.7	4.1	2.6	4.5	21.3	D 2000		
																57.2		
	R	e	c	r	e	a	t	i	o	n	P	a	r	k		D 2000		
	5.5	4.7	4.1	4.3	2.8	4.1	4	3.1	1.9	4.6	3.5	5.4	4.6	4.6	3	3.8	19.9	58.6

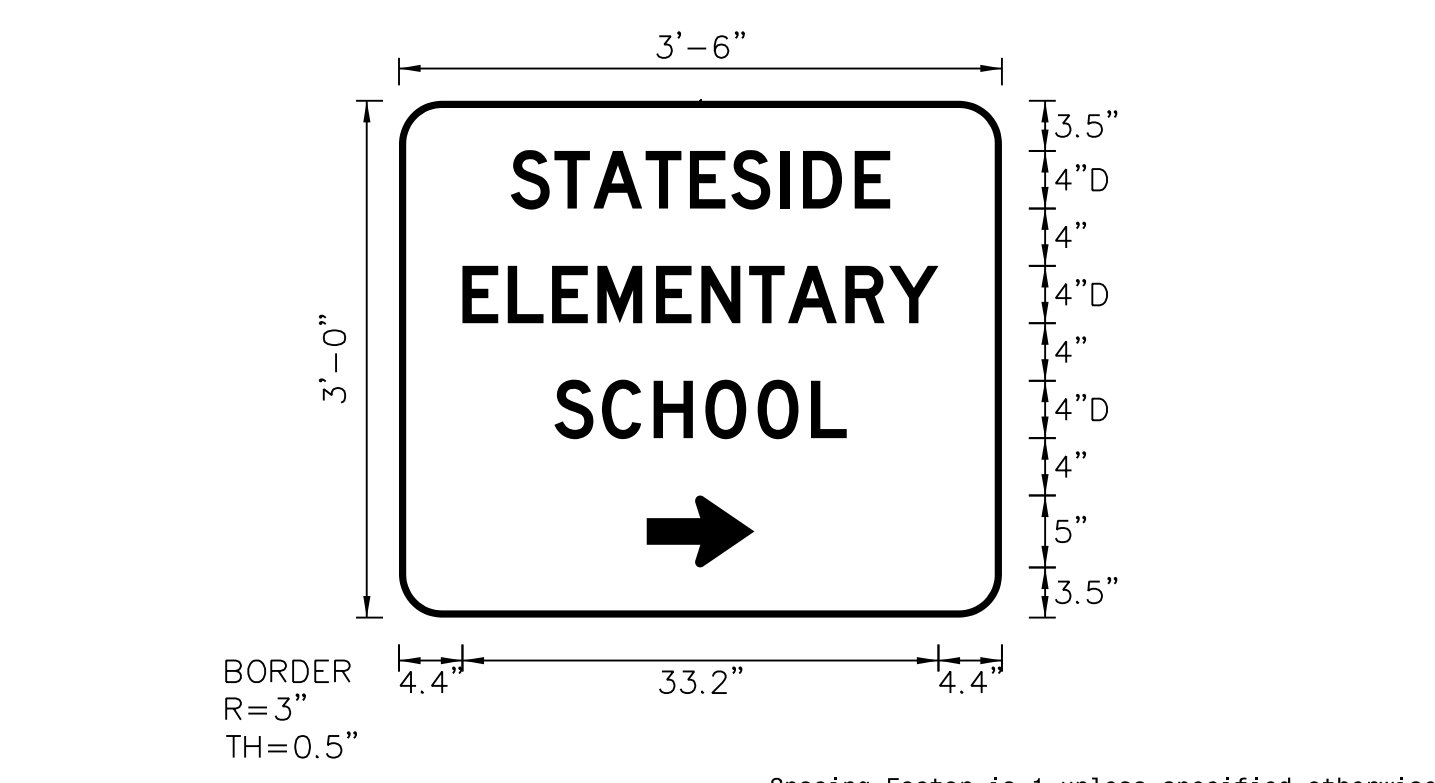
SIGN NUMBER: 303
 TYPE: D
 QUANTITY: 1
 SIGN WIDTH: 3'-6"
 HEIGHT: 3'-0"
 TOTAL AREA: 10.5 Sq.Ft.
 BORDER TYPE: FLUSH
 RECESS: 0"
 WIDTH: 0.5"
 RADII: 3"
 NO. Z BARS: N/A
 LENGTH: N/A

BACKG COLOR: Green
 COPY COLOR: White

SYMBOL	X	Y	WID	HT
Type D Arrow	17.2	3.5	5	7.5

MAT'L: 0.080" ALUMINUM

DESIGN BY: NKV
 PROJECT ID: U-4906
 CHECKED BY: TRT/ADK
 DIV: 03
 DATE: July 2018



- NOTES:
- Legend and border shall be direct applied Grade C reflective sheeting.
 - Arrow shall be Grade C reflective sheeting.
 - Background shall be Grade C reflective sheeting.

LETTER POSITIONS

Letter spacings are to start of next letter

	S	T	A	T	E	S	I	D	E	Series/Size			
	7.8	3	2.7	3.6	3.1	2.9	3.4	1.6	3.6	2.5	7.8	D 2000	
												26.4	
	E	L	E	M	E	N	T	A	R	Y		D 2000	
	4.4	3.2	3.1	3.2	4.1	3.2	3.3	2.7	4	3	3.4	4.4	33.2
	S	C	H	O	O	L						D 2000	
	10.8	3.3	3.6	3.6	3.6	3.7	2.5	10.8				20.4	

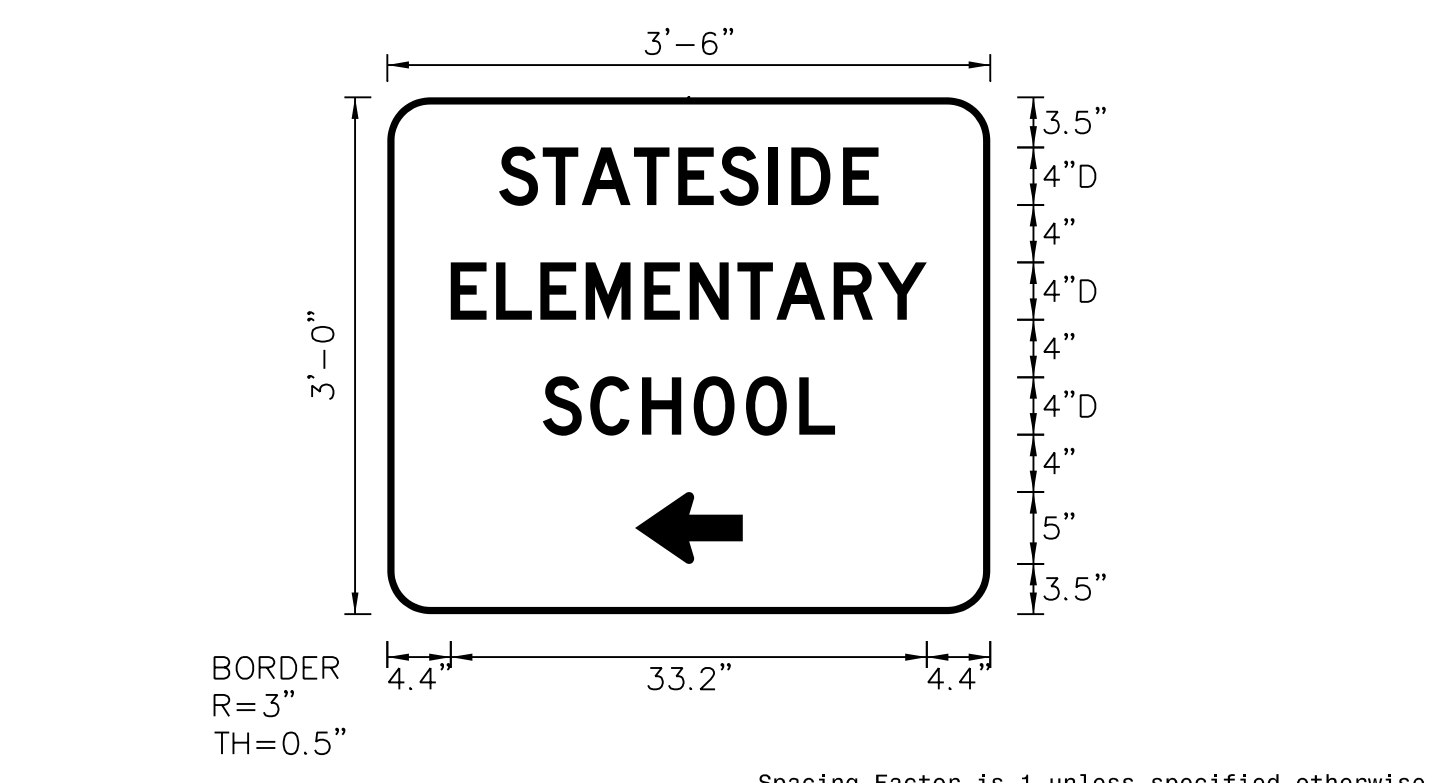
SIGN NUMBER: 302
 TYPE: D
 QUANTITY: 1
 SIGN WIDTH: 3'-6"
 HEIGHT: 3'-0"
 TOTAL AREA: 10.5 Sq.Ft.
 BORDER TYPE: FLUSH
 RECESS: 0"
 WIDTH: 0.5"
 RADII: 3"
 NO. Z BARS: N/A
 LENGTH: N/A

BACKG COLOR: Green
 COPY COLOR: White

SYMBOL	X	Y	WID	HT
Type D Arrow	17.2	3.5	5	7.5

MAT'L: 0.080" ALUMINUM

DESIGN BY: NKV
 PROJECT ID: U-4906
 CHECKED BY: TRT/ADK
 DIV: 03
 DATE: July 2018



- NOTES:
- Legend and border shall be direct applied Grade C reflective sheeting.
 - Arrow shall be Grade C reflective sheeting.
 - Background shall be Grade C reflective sheeting.

LETTER POSITIONS

Letter spacings are to start of next letter

	S	T	A	T	E	S	I	D	E	Series/Size			
	7.8	3	2.7	3.6	3.1	2.9	3.4	1.6	3.6	2.5	7.8	D 2000	
												26.4	
	E	L	E	M	E	N	T	A	R	Y		D 2000	
	4.4	3.2	3.1	3.2	4.1	3.2	3.3	2.7	4	3	3.4	4.4	33.2
	S	C	H	O	O	L						D 2000	
	10.8	3.3	3.6	3.6	3.6	3.7	2.5	10.8				20.4	

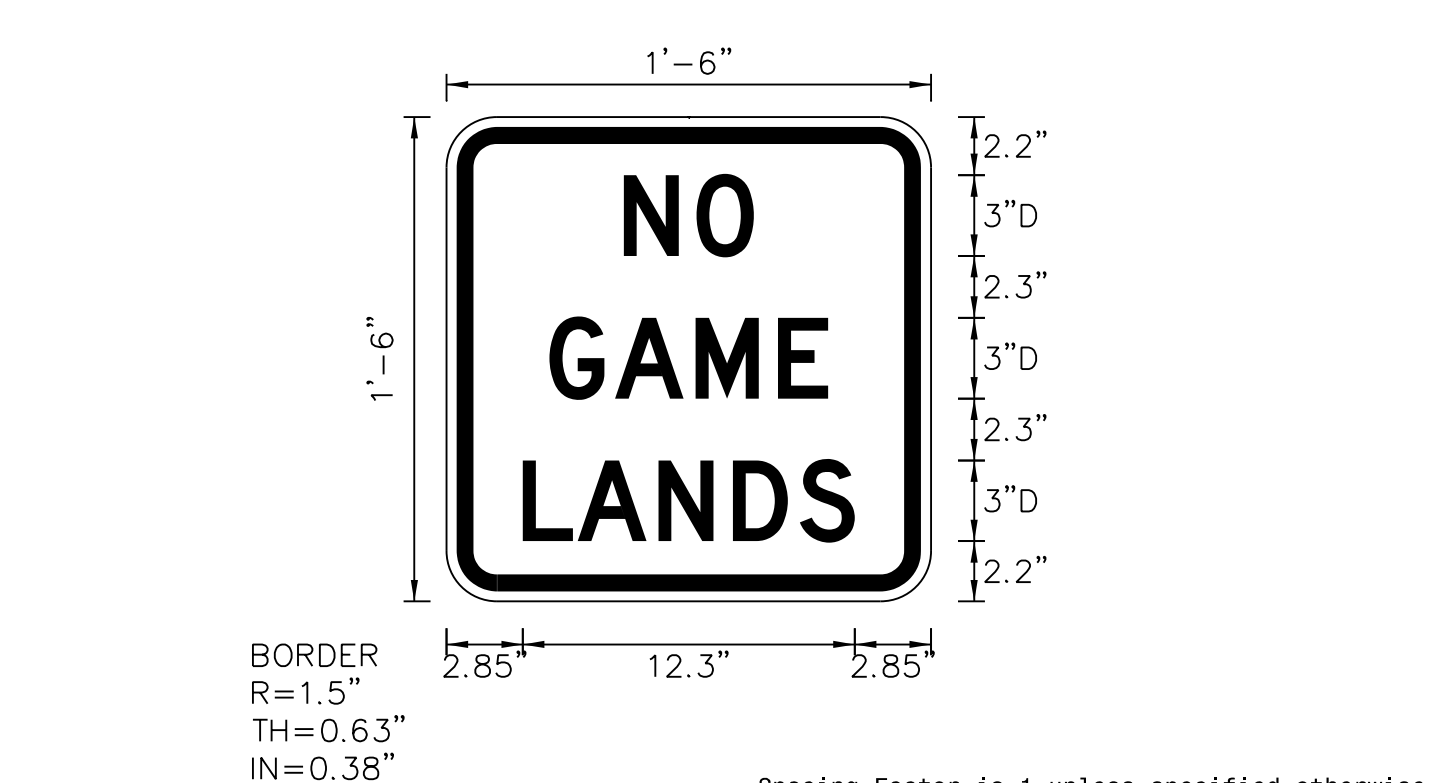
SIGN NUMBER: 416
 TYPE: E
 QUANTITY: 1
 SIGN WIDTH: 1'-6"
 HEIGHT: 1'-6"
 TOTAL AREA: 2.3 Sq.Ft.
 BORDER TYPE: RECESSED
 RECESS: 0.38"
 WIDTH: 0.63"
 RADII: 1.5"
 NO. Z BARS: N/A
 LENGTH: N/A

BACKG COLOR: Yellow
 COPY COLOR: Black

SYMBOL	X	Y	WID	HT
Type D Arrow	17.2	3.5	5	7.5

MAT'L: 0.063" ALUMINUM

DESIGN BY: NKV
 PROJECT ID: I-4700
 CHECKED BY: TRT/ADK
 DIV: 03
 DATE: July 2018



- NOTES:
- Legend and border shall be silk-screened or reverse silk-screened opaque black ink.
 - Arrow shall be Grade C reflective sheeting.
 - Background shall be Grade C reflective sheeting.

LETTER POSITIONS

Letter spacings are to start of next letter

	N	O	Series/Size					
	6.6	2.7	2.1	6.6	D 2000			
					4.8			
	G	A	M	E	D 2000			
	3.8	2.4	3	3.1	1.9	3.8	10.4	
	L	A	N	D	S		D 2000	
	2.8	2	3	2.8	2.5	2	2.8	12.3