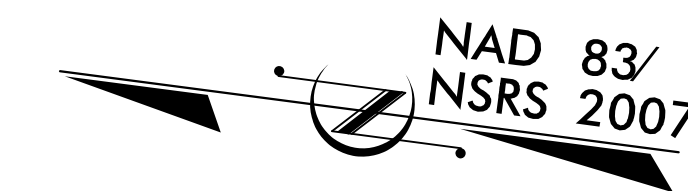
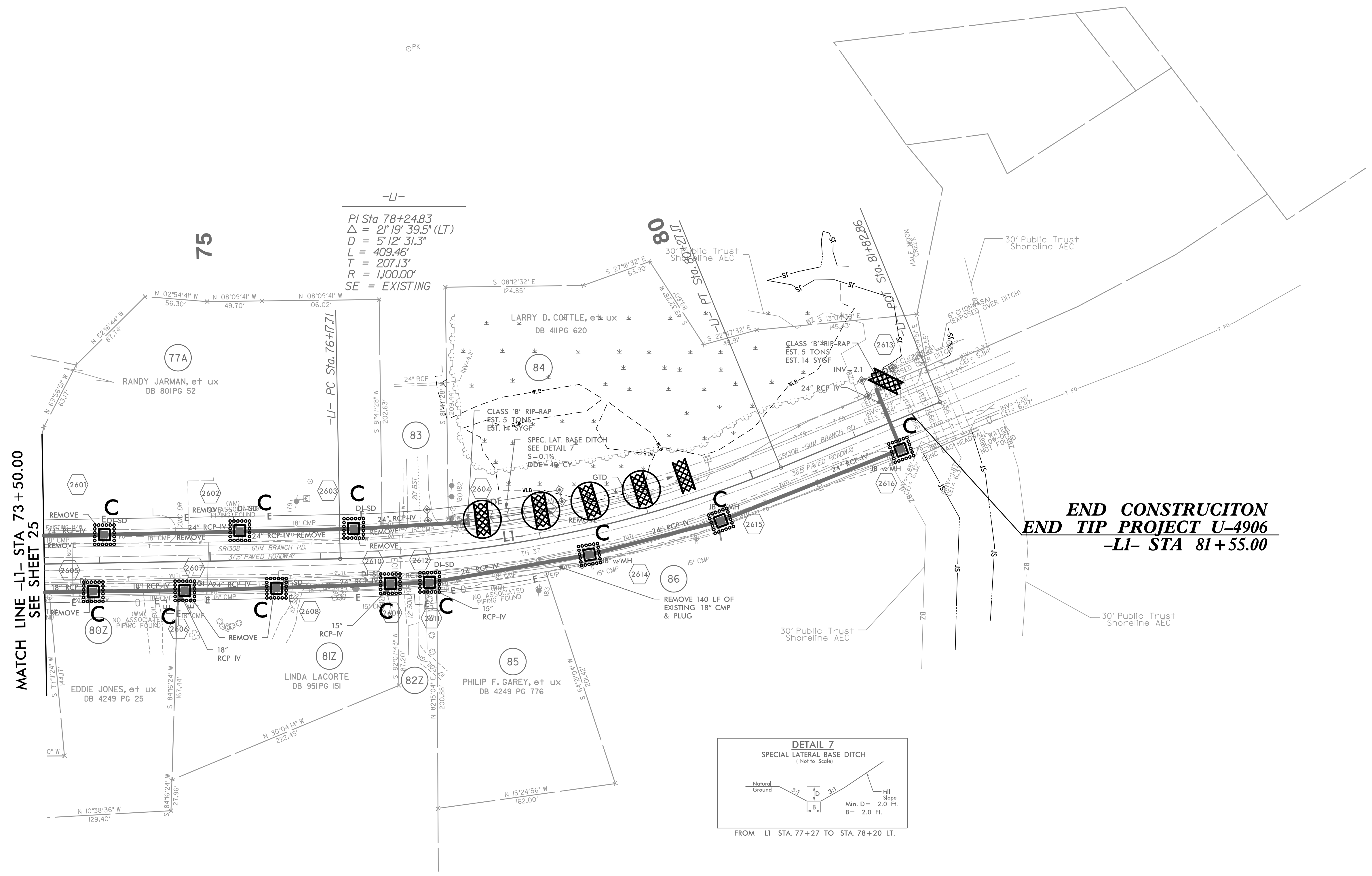


PROJECT REFERENCE NO.	SHEET NO.
U-4906	EC-49/CONST.26
RW SHEET NO.	
ROADWAY DESIGN ENGINEER	HYDRAULICS ENGINEER



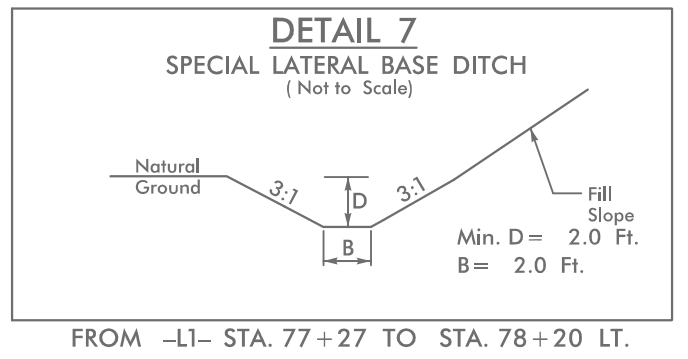
REVISIONS
 2017-09-14 ROW Revision - Revised PDE on Parcel 83, Added PDE ROW Markers to Parcels 83 & 84, DMW
 2018-09-28 ROW Revision - Removed TCE on Parcel 86, Revised TCE on Parcel 85, Added PDE on Parcel 84, CRG
 2021-04-14 ROW Revision - Revised TCE on Parcel 80, 81 and 82, DMW

5/18/2022
 5/18/2022 EC-26 - Const+26.dgn



-LI-
 PI Sta 78+24.83
 $\Delta = 2^\circ 19' 39.5''$ (LT)
 $D = 5^\circ 12' 31.3''$
 $L = 409.46'$
 $T = 207.13'$
 $R = 1,000.00'$
 SE = EXISTING

**END CONSTRUCTION
 END TIP PROJECT U-4906
 -LI- STA 81+55.00**



NOTE: ALL DRIVEWAY RADII ARE 10' UNLESS OTHERWISE NOTED ON PLANS