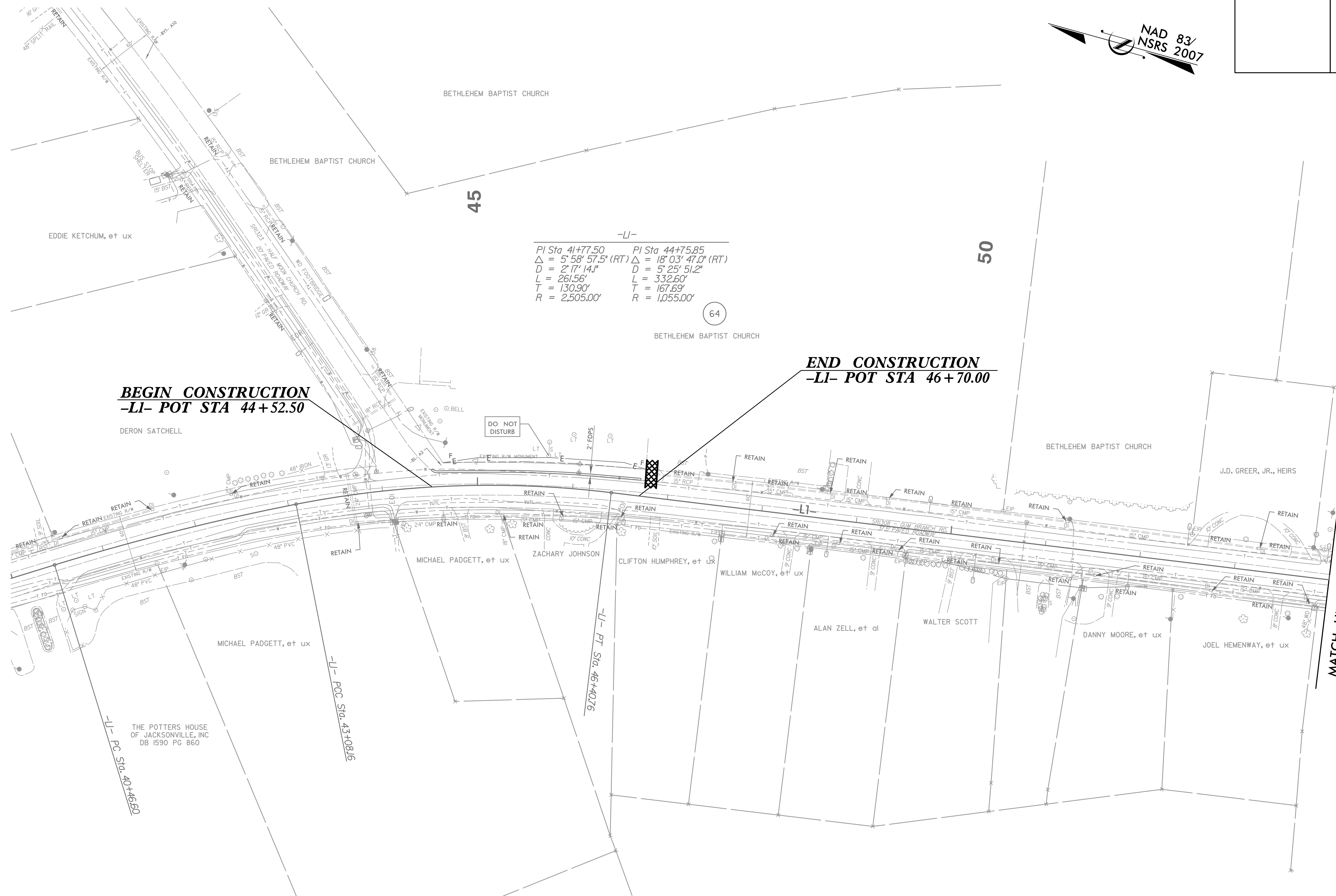
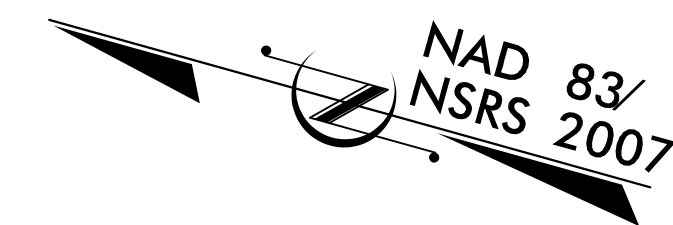


8/17/99

PROJECT REFERENCE NO.	SHEET NO.
U-4906	EC-47/CONST.24
RW SHEET NO.	
ROADWAY DESIGN ENGINEER	HYDRAULICS ENGINEER



-LI-

PI Sta 41+77.50	PI Sta 44+75.85
$\Delta = 5^{\circ} 58' 57.5" (RT)$	$\Delta = 18^{\circ} 03' 47.0" (RT)$
$D = 2^{\circ} 17' 14.1"$	$D = 5^{\circ} 25' 51.2"$
$L = 261.56'$	$L = 332.60'$
$T = 130.90'$	$T = 167.69'$
$R = 2,505.00'$	$R = 1,055.00'$

BEGIN CONSTRUCTION
-LI- POT STA 44+52.50

END CONSTRUCTION
-LI- POT STA 46+70.00

MATCH LINE -LI- STA 54+00.00
SEE SHEET 25

DESIGN EXCEPTION REQUESTED FOR LANE WIDTHS (11') AND USABLE SHOULDER (4' MINIMUM)

FOR -LI- PROFILE, SEE SHEET 36

1/11/2009 10:06:56 EC-24_Const-24.dgn
 HNTB