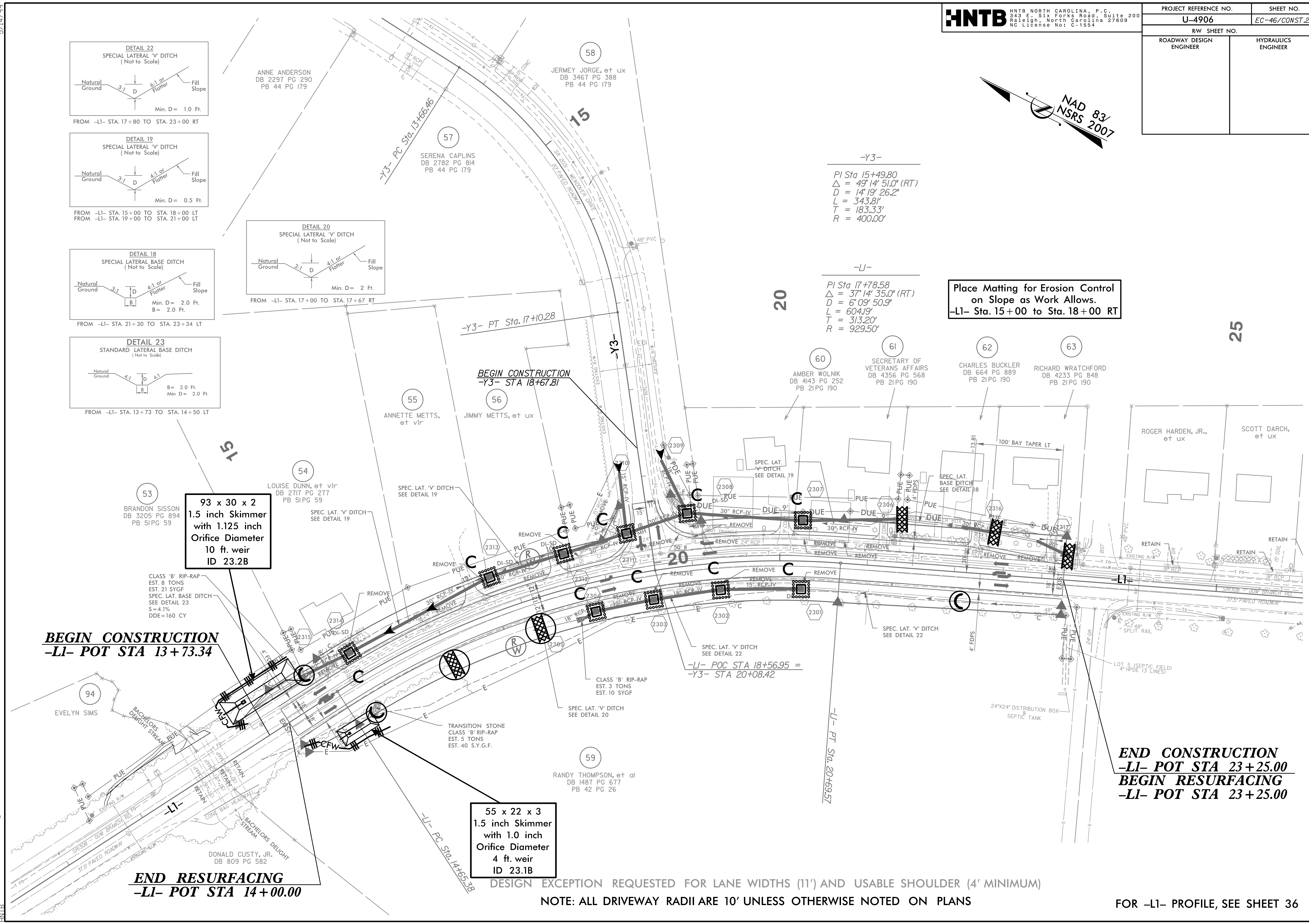
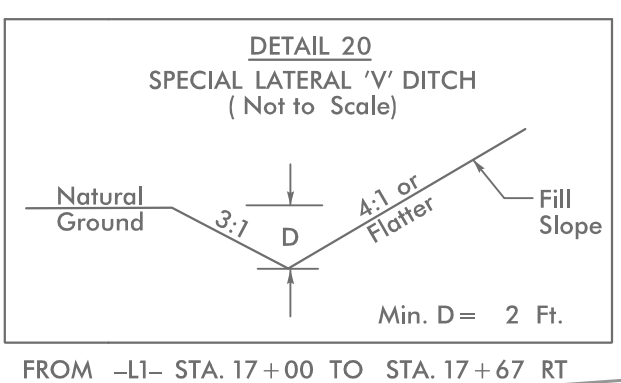
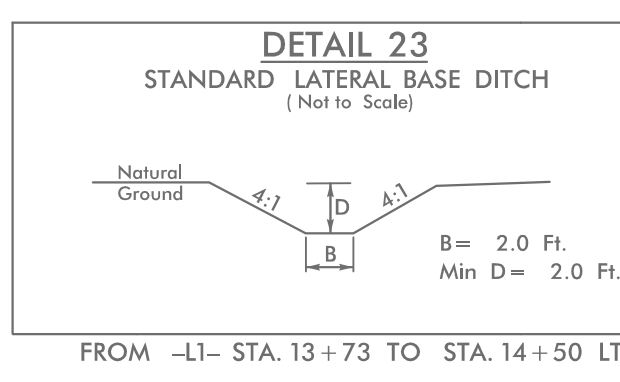
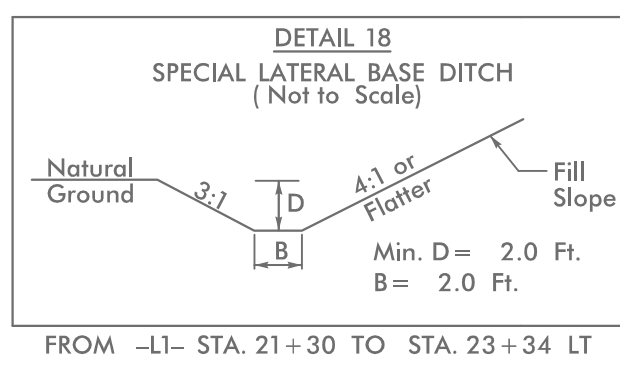
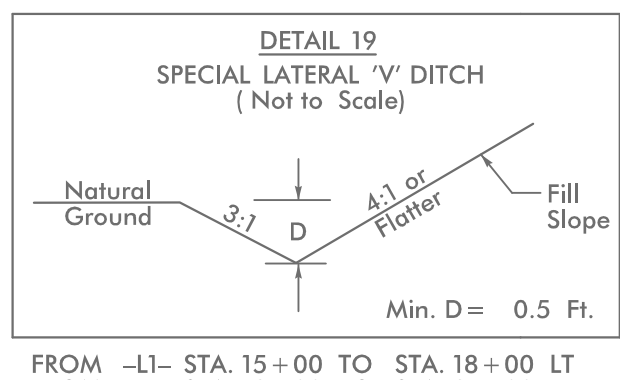
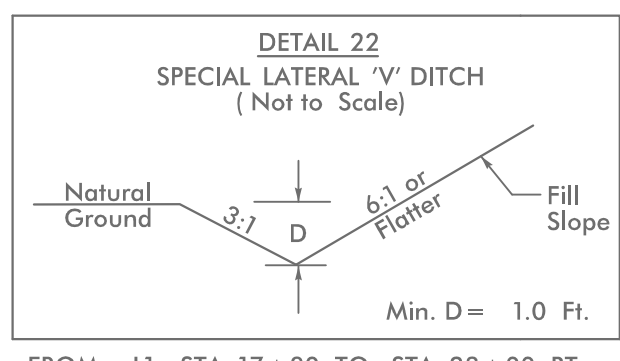
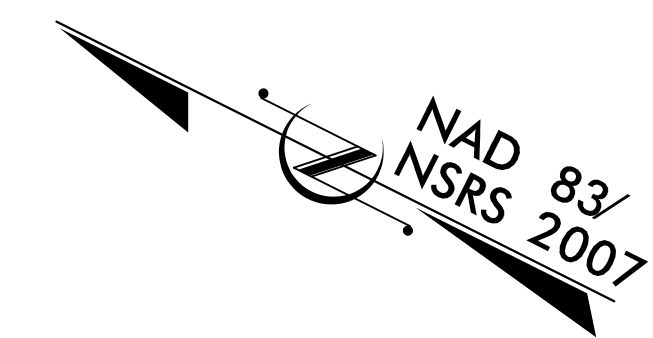


PROJECT REFERENCE NO.	SHEET NO.
U-4906	EC-46/CONST.23
RW SHEET NO.	
ROADWAY DESIGN ENGINEER	HYDRAULICS ENGINEER



**93 x 30 x 2**  
1.5 inch Skimmer  
with 1.125 inch  
Orifice Diameter  
10 ft. weir  
ID 23.2B

**55 x 22 x 3**  
1.5 inch Skimmer  
with 1.0 inch  
Orifice Diameter  
4 ft. weir  
ID 23.1B

CLASS 'B' RIP-RAP  
EST. 8 TONS  
EST. 21 SYGF  
SPEC. LAT. BASE DITCH  
SEE DETAIL 23  
S=4.1%  
DDE=160 CY

CLASS 'B' RIP-RAP  
EST. 3 TONS  
EST. 10 SYGF

TRANSITION STONE  
CLASS 'B' RIP-RAP  
EST. 5 TONS  
EST. 40 S.Y.G.F.

**END CONSTRUCTION**  
-L1- POT STA 23+25.00  
**BEGIN RESURFACING**  
-L1- POT STA 23+25.00

FOR -L1- PROFILE, SEE SHEET 36

5/14/99  
1/11/2006-EC-23-Const-23.dgn