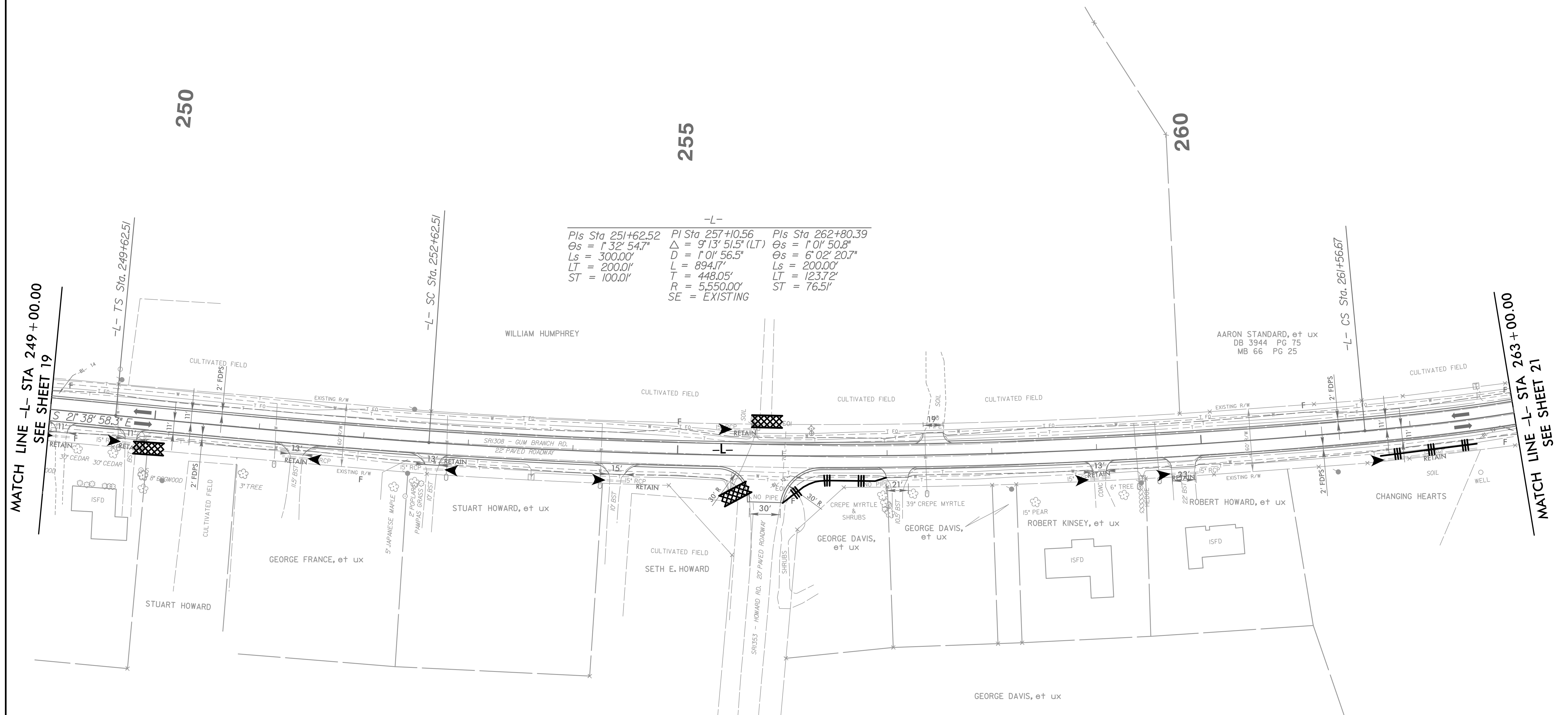
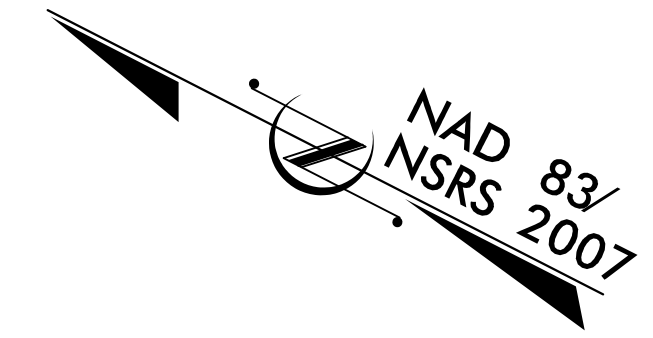


5/14/99

PROJECT REFERENCE NO.	SHEET NO.
U-4906	EC-43/CONST.20
RW SHEET NO.	
ROADWAY DESIGN ENGINEER	HYDRAULICS ENGINEER



-L-

Pls Sta 251+62.52	PI Sta 257+10.56	Pls Sta 262+80.39
$\theta_s = 1^\circ 32' 54.7''$	$\Delta = 9^\circ 13' 51.5''$ (LT)	$\theta_s = 1^\circ 01' 50.8''$
$L_s = 300.00'$	$D = 1^\circ 01' 56.5''$	$\theta_s = 6^\circ 02' 20.7''$
$LT = 200.01'$	$L = 894.7'$	$L_s = 200.00'$
$ST = 100.01'$	$T = 448.05'$	$LT = 123.72'$
	$R = 5,550.00'$	$ST = 76.51'$
	$SE = EXISTING$	

DESIGN EXCEPTION REQUESTED FOR LANE WIDTHS (11') AND USABLE SHOULDER (4' MINIMUM)
NOTE: ALL DRIVEWAY RADII ARE 10' UNLESS OTHERWISE NOTED ON PLANS

FOR -L- PROFILE, SEE SHEETS 34 AND 35

1/1/2018
 U:\2016\EC-20_Const-20.dgn
 HNTB