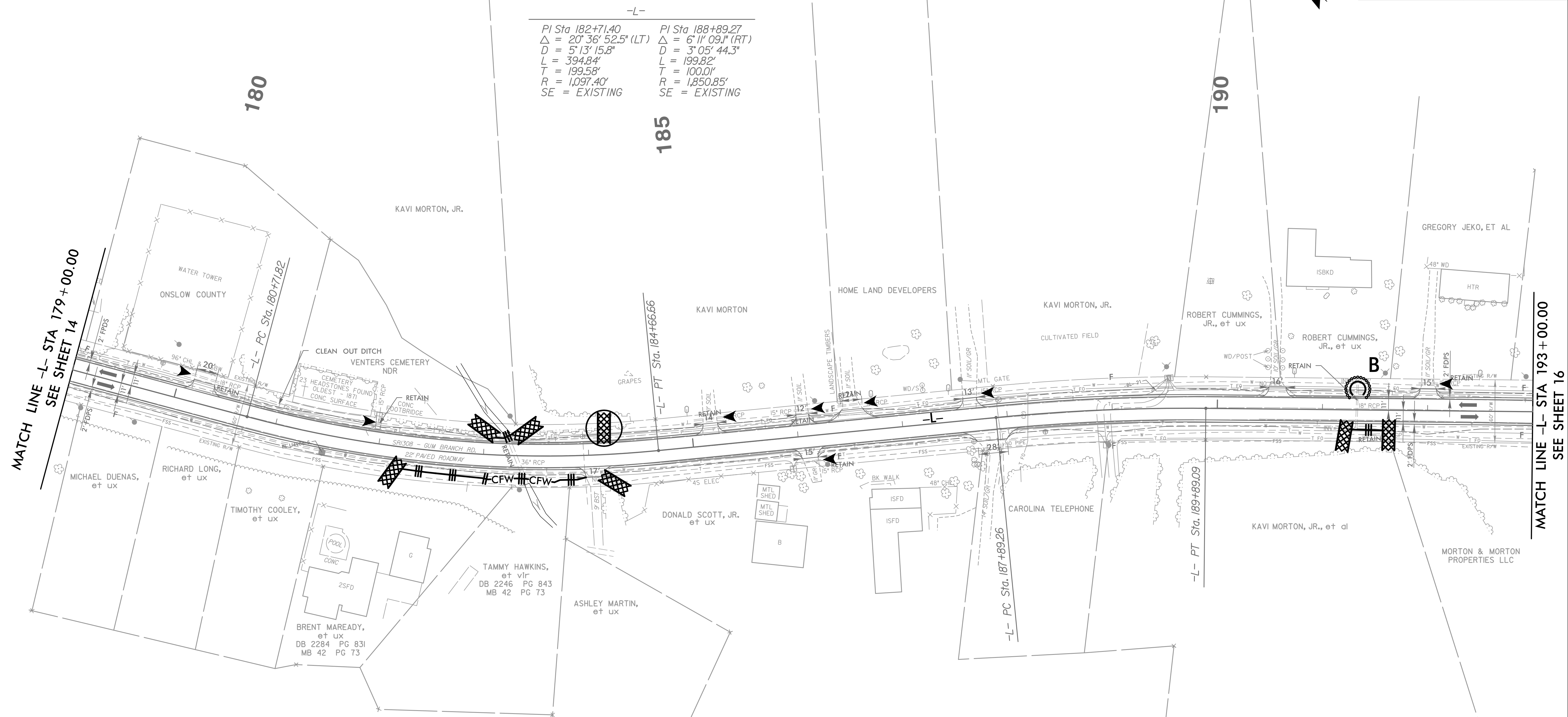
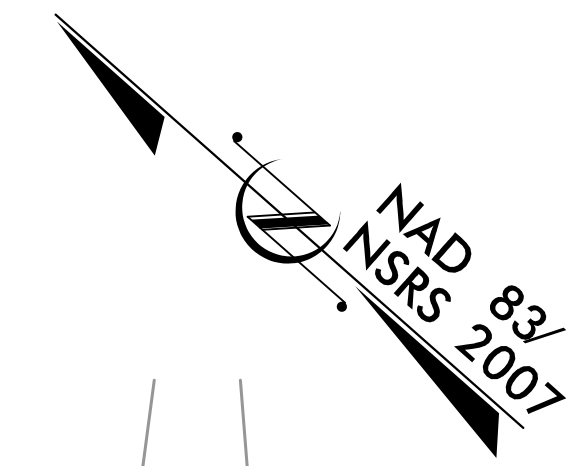


5/14/99

**HNTB** HNTB NORTH CAROLINA, P.C.  
343 E. SIX FORKS ROAD, SUITE 200  
RALEIGH, NORTH CAROLINA 27609  
NC LICENSE NO: C-1554

PROJECT REFERENCE NO.	SHEET NO.
U-4906	EC-38/CONST J5
RW SHEET NO.	
ROADWAY DESIGN ENGINEER	HYDRAULICS ENGINEER



-L-

PI Sta 182+71.40	PI Sta 188+89.27
$\Delta = 20^\circ 36' 52.5''$ (LT)	$\Delta = 6^\circ 11' 09.1''$ (RT)
$D = 5^\circ 13' 15.8''$	$D = 3^\circ 05' 44.3''$
$L = 394.84'$	$L = 199.82'$
$T = 199.58'$	$T = 100.01'$
$R = 1,097.40'$	$R = 1,850.85'$
SE = EXISTING	SE = EXISTING

MATCH LINE -L- STA 179+00.00  
SEE SHEET 14

MATCH LINE -L- STA 193+00.00  
SEE SHEET 16

DESIGN EXCEPTION REQUESTED FOR LANE WIDTHS (11') AND USABLE SHOULDER (4' MINIMUM)  
NOTE: ALL DRIVEWAY RADII ARE 10' UNLESS OTHERWISE NOTED

FOR -L- PROFILE, SEE SHEET 32

1/1/2008  
15%  
EC-15\_Const-15.dgn  
HNTB