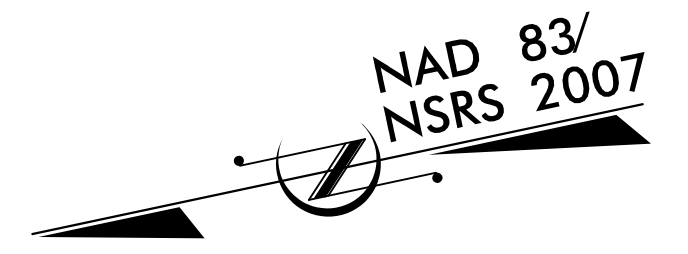


5/14/99

PROJECT REFERENCE NO.	SHEET NO.
U-4906	EC-36/CONST.13
RW SHEET NO.	
ROADWAY DESIGN ENGINEER	HYDRAULICS ENGINEER



NOTE: UTILIZE COIR FIBER MATTING ADJACENT TO WETLANDS / JURISDICTIONAL AREAS, AND AS DIRECTED

52 x 12 x 3
1.5 inch Skimmer
with 0.625 inch
Orifice Diameter
4 ft. weir
ID 13.4B

44 x 16 x 3
1.5 inch Skimmer
with 0.625 inch
Orifice Diameter
4 ft. weir
ID 13.5F

62 x 16 x 3
ID 13.6B

55 x 15 x 3
ID 13.3B

41 x 12 x 3
ID 13.2B

50 x 20 x 3
ID 13.7B

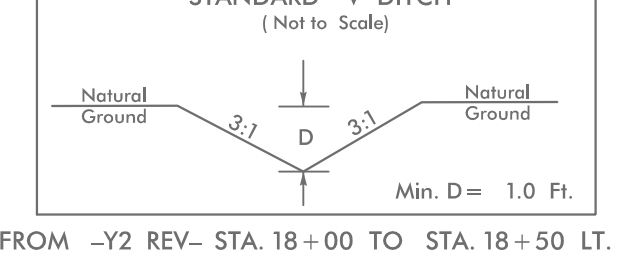
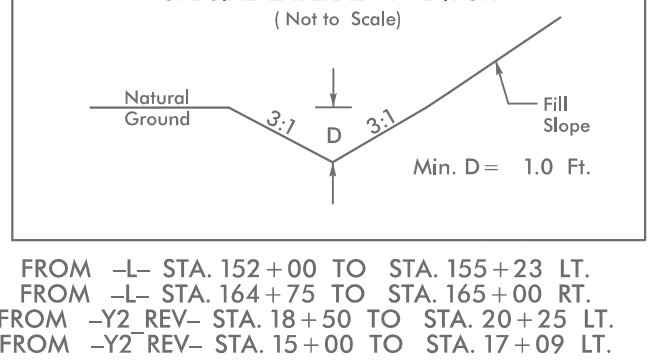
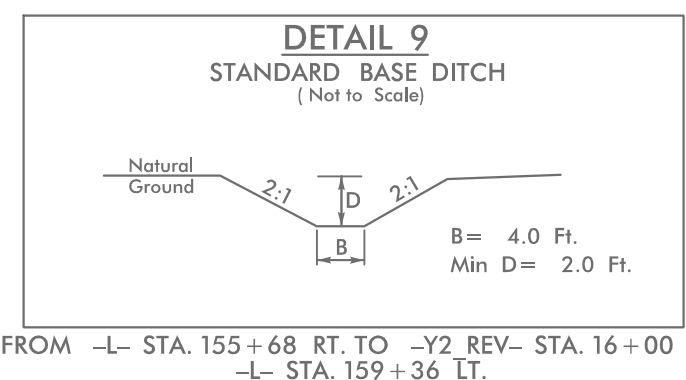
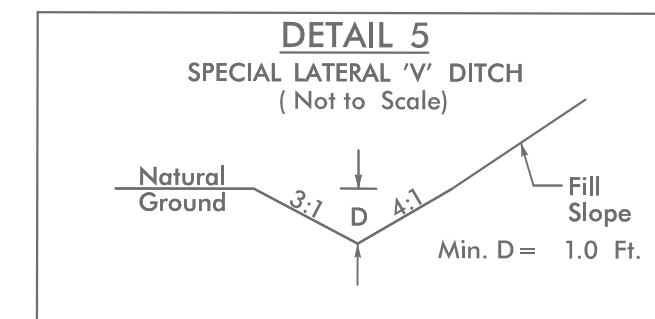
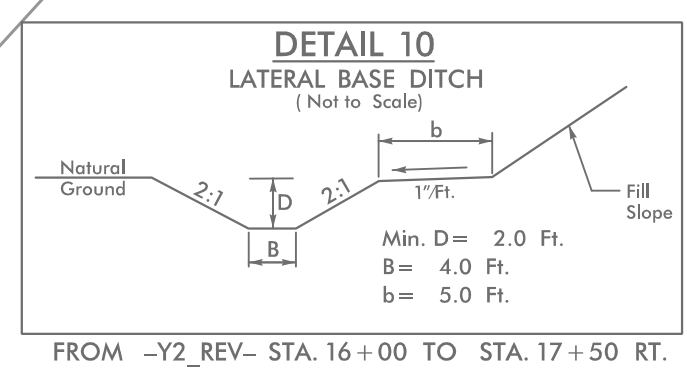
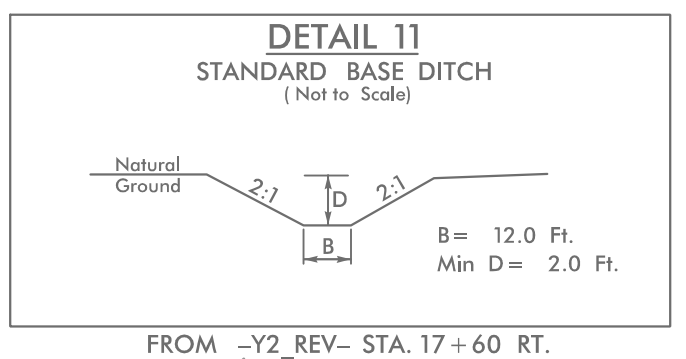
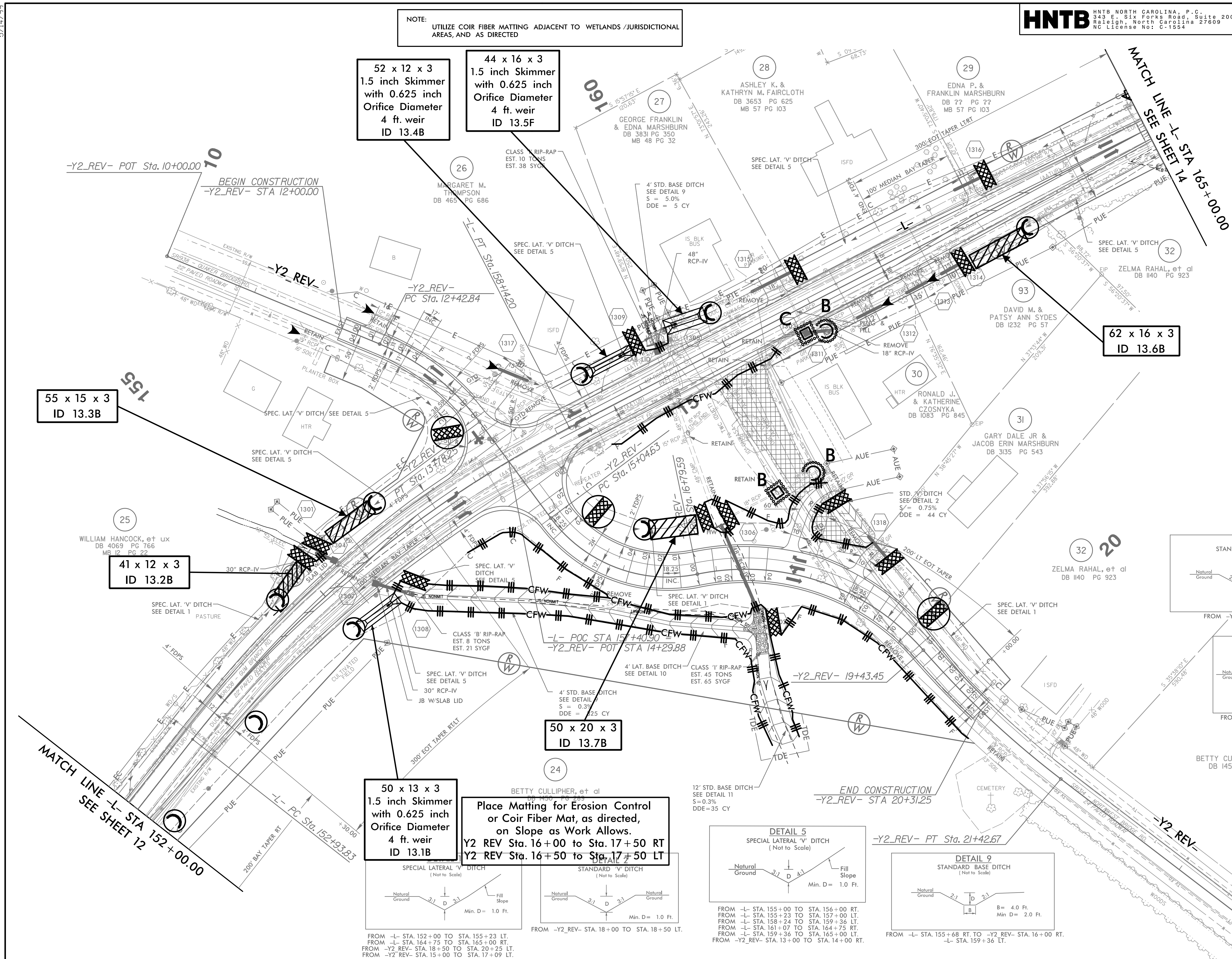
50 x 13 x 3
1.5 inch Skimmer
with 0.625 inch
Orifice Diameter
4 ft. weir
ID 13.1B

Place Matting for Erosion Control
or Coir Fiber Mat, as directed,
on Slope as Work Allows.
Y2 REV Sta. 16+00 to Sta. 17+50 RT
Y2 REV Sta. 16+50 to Sta. 17+50 LT

MATCH LINE -L- STA 152+00.00
SEE SHEET 12

MATCH LINE -L- STA 165+00.00
SEE SHEET 14

5/18/2006-EC-13_Const-13.dgn



FROM -L- STA. 152+00 TO STA. 155+23 LT.
FROM -L- STA. 164+75 TO STA. 165+00 RT.
FROM -Y2_REV- STA. 18+50 TO STA. 20+25 LT.
FROM -Y2_REV- STA. 15+00 TO STA. 17+09 LT.

FROM -L- STA. 155+00 TO STA. 156+00 RT.
FROM -L- STA. 155+23 TO STA. 157+00 LT.
FROM -L- STA. 158+24 TO STA. 159+36 LT.
FROM -L- STA. 161+07 TO STA. 164+75 RT.
FROM -L- STA. 159+36 TO STA. 165+00 RT.
FROM -Y2_REV- STA. 13+00 TO STA. 14+00 RT.

FROM -L- STA. 155+68 RT. TO -Y2_REV- STA. 16+00 RT.
-L- STA. 159+36 LT.

DESIGN EXCEPTION REQUESTED FOR LANE WIDTHS (11') AND USABLE SHOULDER (4' MINIMUM)
NOTE: ALL DRIVEWAY RADII ARE 10' UNLESS OTHERWISE NOTED

FOR -L- PROFILE, SEE SHEET 31
FOR -Y2_REV- PROFILE, SEE SHEET 38