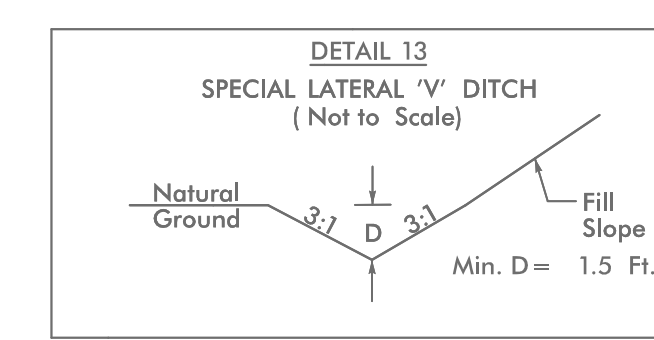
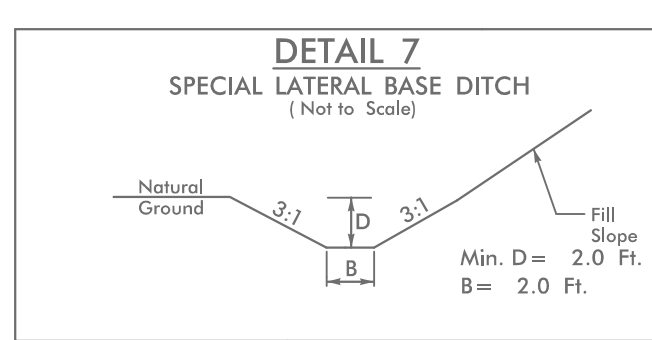
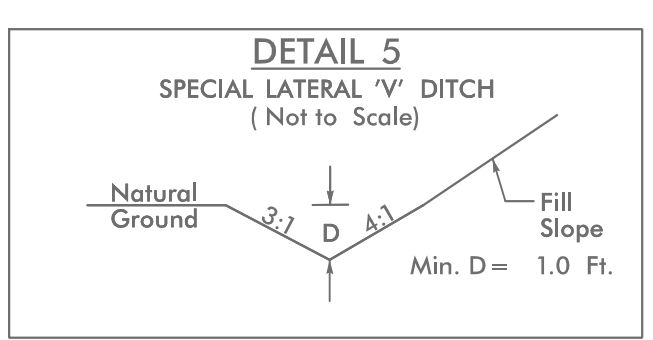
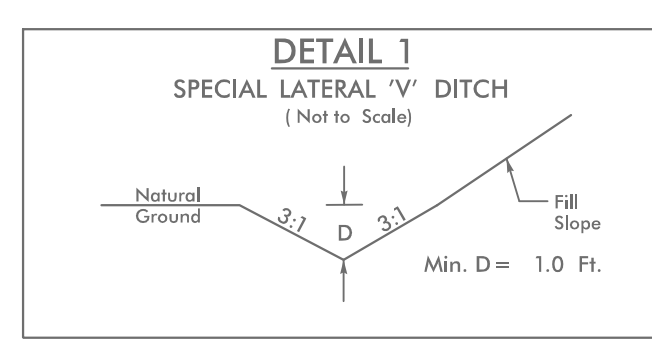
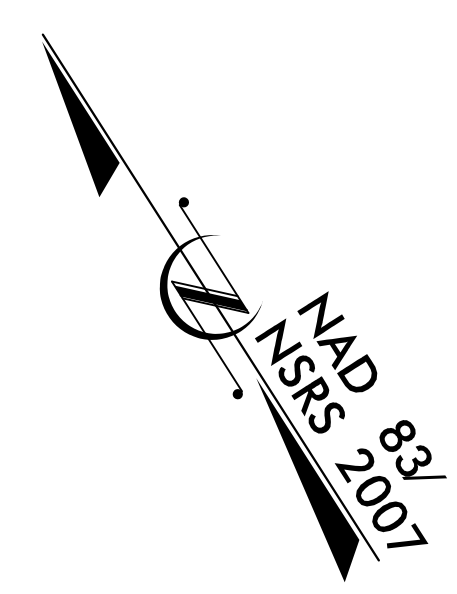


5/14/99

PROJECT REFERENCE NO.	SHEET NO.
U-4906	EC-33/CONST.10
RW SHEET NO.	
ROADWAY DESIGN ENGINEER	HYDRAULICS ENGINEER



FROM -L- STA. 118+10 TO STA. 119+00 LT.  
FROM -L- STA. 112+00 TO STA. 113+66 RT.  
FROM -L- STA. 112+00 TO STA. 114+00 LT.  
FROM -L- STA. 118+10 TO STA. 119+00 LT.  
FROM -YI- STA. 12+00 TO STA. 15+25 LT.  
FROM -YI- STA. 12+00 TO STA. 16+50 RT.

FROM -L- STA. 116+68 TO STA. 119+00 RT.  
FROM -L- STA. 119+50 TO STA. 121+00 RT.  
FROM -L- STA. 120+00 TO STA. 121+75 LT.  
FROM -L- STA. 124+00 TO STA. 125+00 LT.  
FROM -L- STA. 123+50 TO STA. 125+00 RT.

FROM -L- STA. 117+44 TO STA. 118+10 LT.

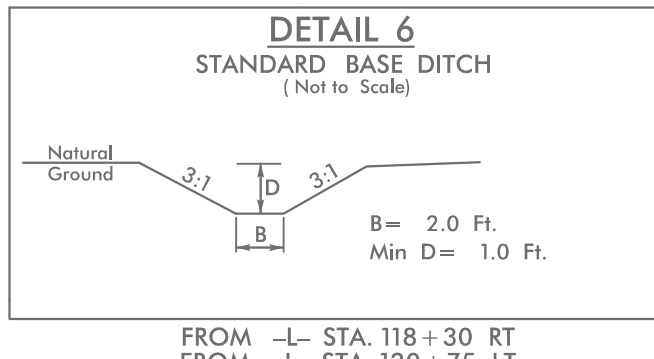
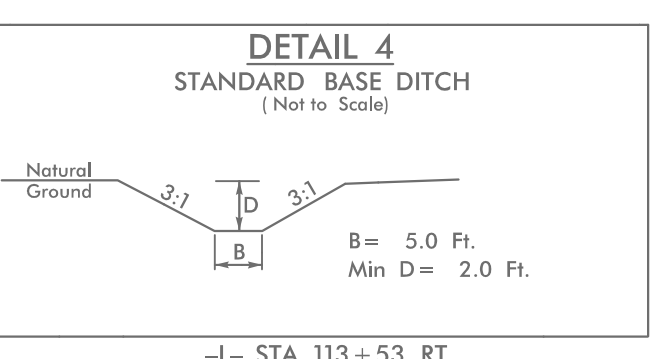
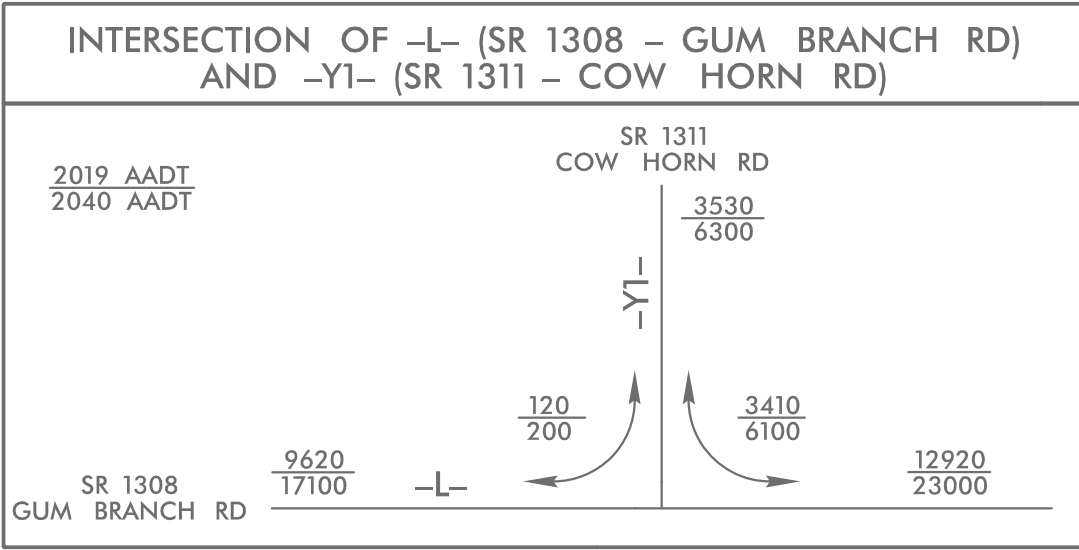
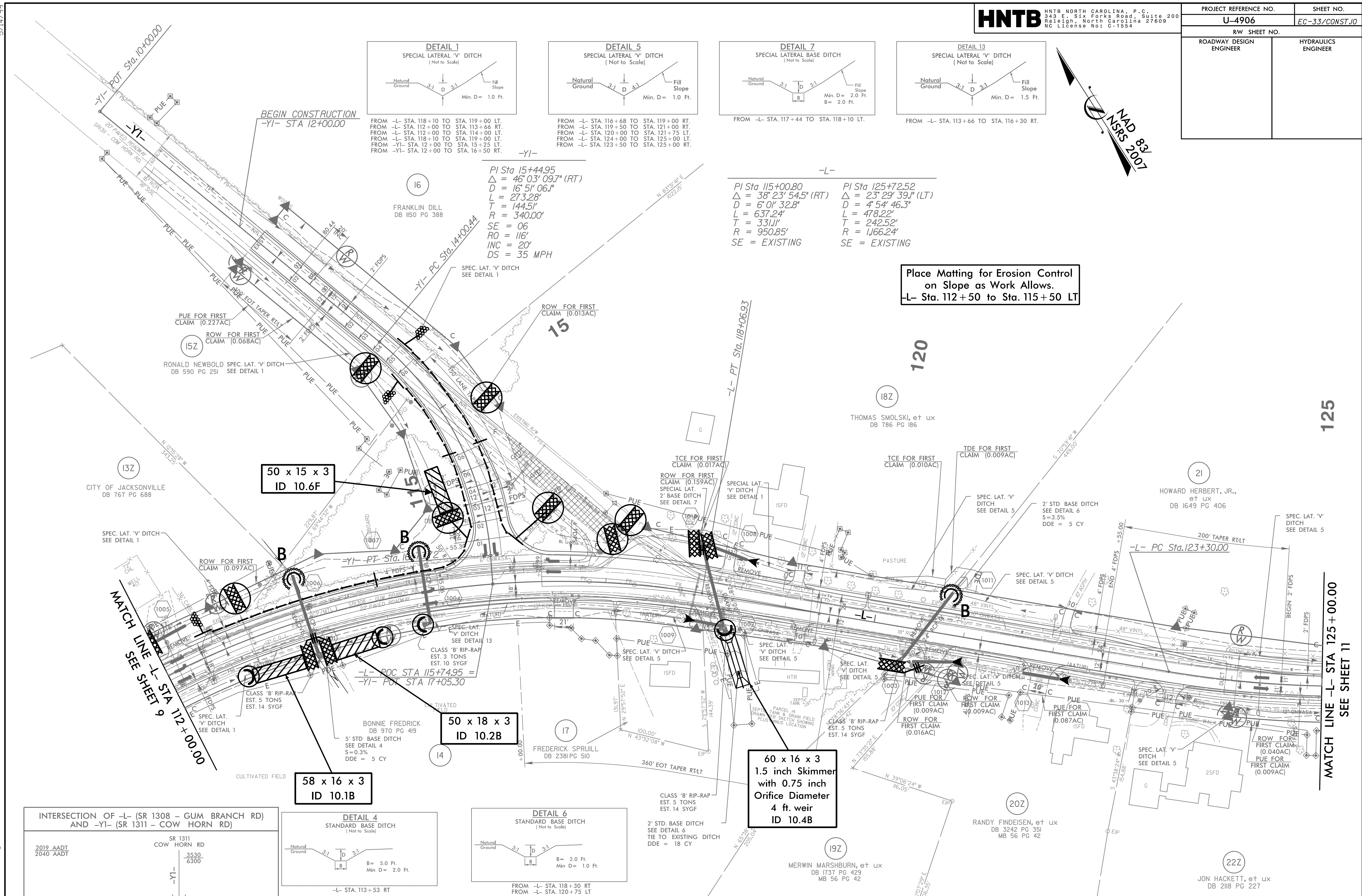
FROM -L- STA. 113+66 TO STA. 116+30 RT.

PI Sta 15+44.95  
Δ = 46° 03' 09.7" (RT)  
D = 16' 51" 06.1"  
L = 273.28'  
T = 144.51'  
R = 340.00'  
SE = 06  
RO = 116'  
INC = 20'  
DS = 35 MPH

-L-  
PI Sta 115+00.80 Δ = 38° 23' 54.5" (RT)  
D = 6' 01' 32.8" L = 637.24'  
T = 331.11' R = 950.85'  
SE = EXISTING

PI Sta 125+72.52 Δ = 23° 29' 39.1" (LT)  
D = 4' 54' 46.3" L = 478.22'  
T = 242.52' R = 1,166.24'  
SE = EXISTING

Place Matting for Erosion Control on Slope as Work Allows.  
-L- Sta. 112+50 to Sta. 115+50 LT



DESIGN EXCEPTION REQUESTED FOR LANE WIDTHS (11') AND USABLE SHOULDER (4' MINIMUM)  
NOTE: ALL DRIVEWAY RADII ARE 10' UNLESS OTHERWISE NOTED

FOR -L- PROFILE, SEE SHEETS 29 AND 30  
FOR -YI- PROFILE, SEE SHEET 38

5/18/2021 EC-10\_Const-10.dgn