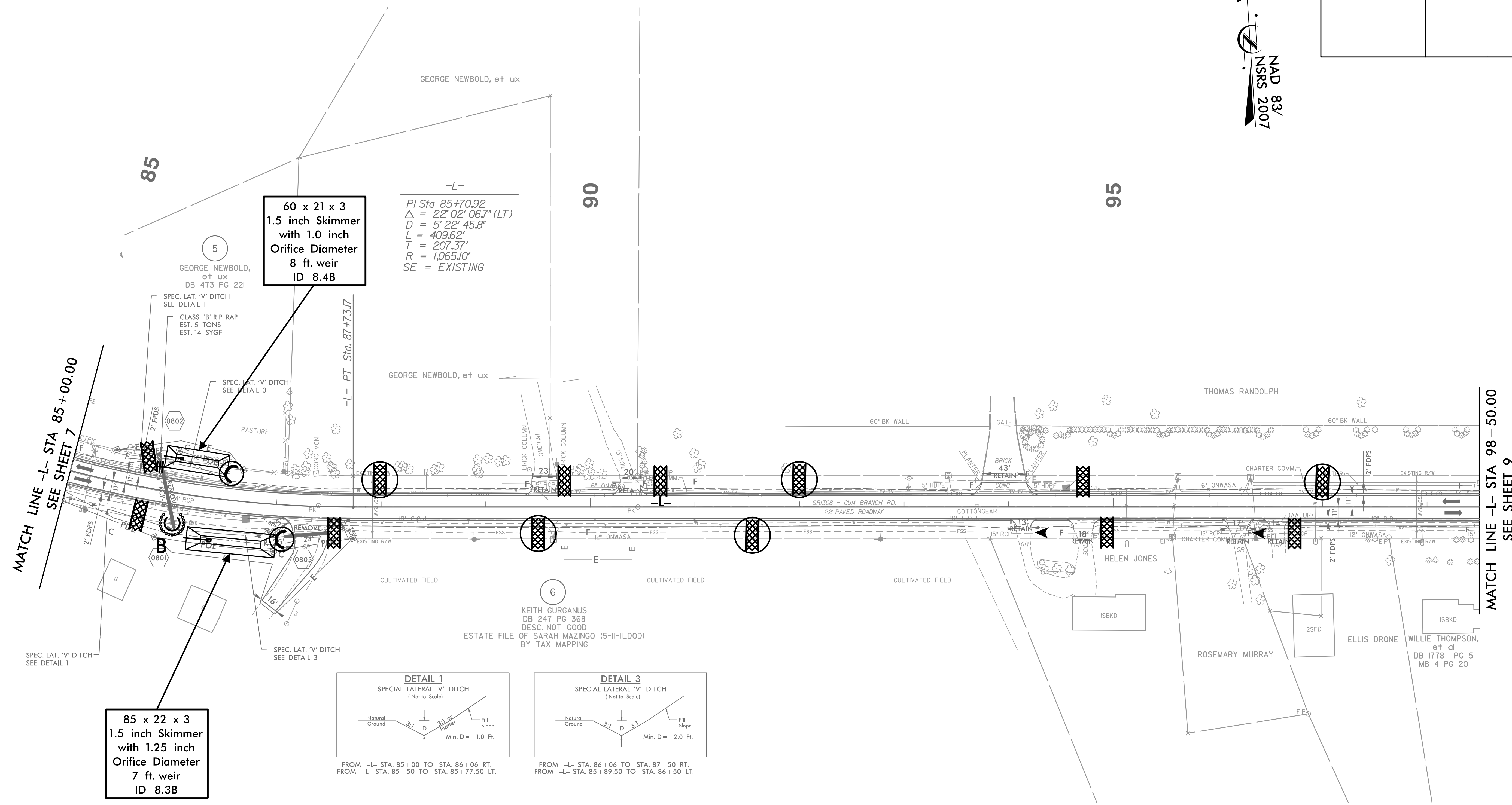


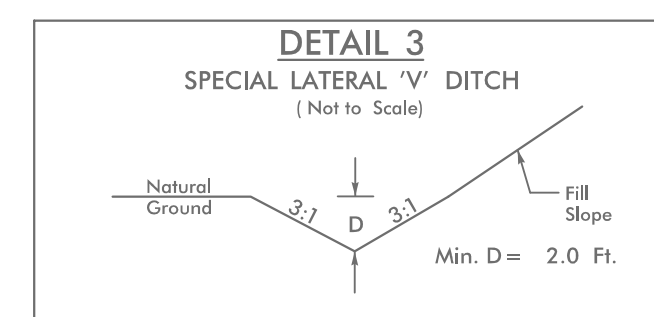
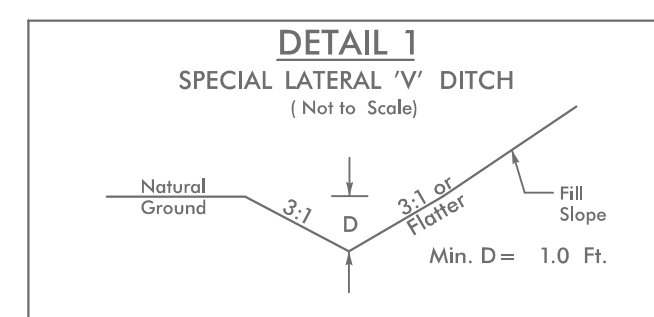
PROJECT REFERENCE NO.	SHEET NO.
U-4906	EC-31/CONST.B
RW SHEET NO.	
ROADWAY DESIGN ENGINEER	HYDRAULICS ENGINEER



**60 x 21 x 3  
 1.5 inch Skimmer  
 with 1.0 inch  
 Orifice Diameter  
 8 ft. weir  
 ID 8.4B**

-L-  
 PI Sta 85+70.92  
 $\Delta = 22^{\circ} 02' 06.7''$  (LT)  
 $D = 5^{\circ} 22' 45.8''$   
 $L = 409.62'$   
 $T = 207.37'$   
 $R = 1,065.10'$   
 SE = EXISTING

**85 x 22 x 3  
 1.5 inch Skimmer  
 with 1.25 inch  
 Orifice Diameter  
 7 ft. weir  
 ID 8.3B**



DESIGN EXCEPTION REQUESTED FOR LANE WIDTHS (11') AND USABLE SHOULDER (4' MINIMUM)  
 NOTE: ALL DRIVEWAY RADII ARE 10' UNLESS OTHERWISE NOTED

FOR -L- PROFILE, SEE SHEET 28 AND 29

5/14/99

1/1/2009  
 U-4906-EC-8\_Const-8.dgn  
 HNTB