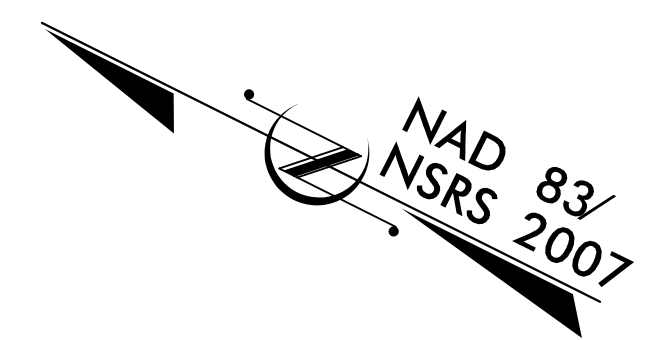


5/14/99

HNTB HNTB NORTH CAROLINA, P.C.
343 E. SIX FORKS ROAD, SUITE 200
RALEIGH, NORTH CAROLINA 27609
NC LICENSE NO: C-1554

PROJECT REFERENCE NO.	SHEET NO.
U-4906	EC-29/CONST.6
RW SHEET NO.	
ROADWAY DESIGN ENGINEER	HYDRAULICS ENGINEER

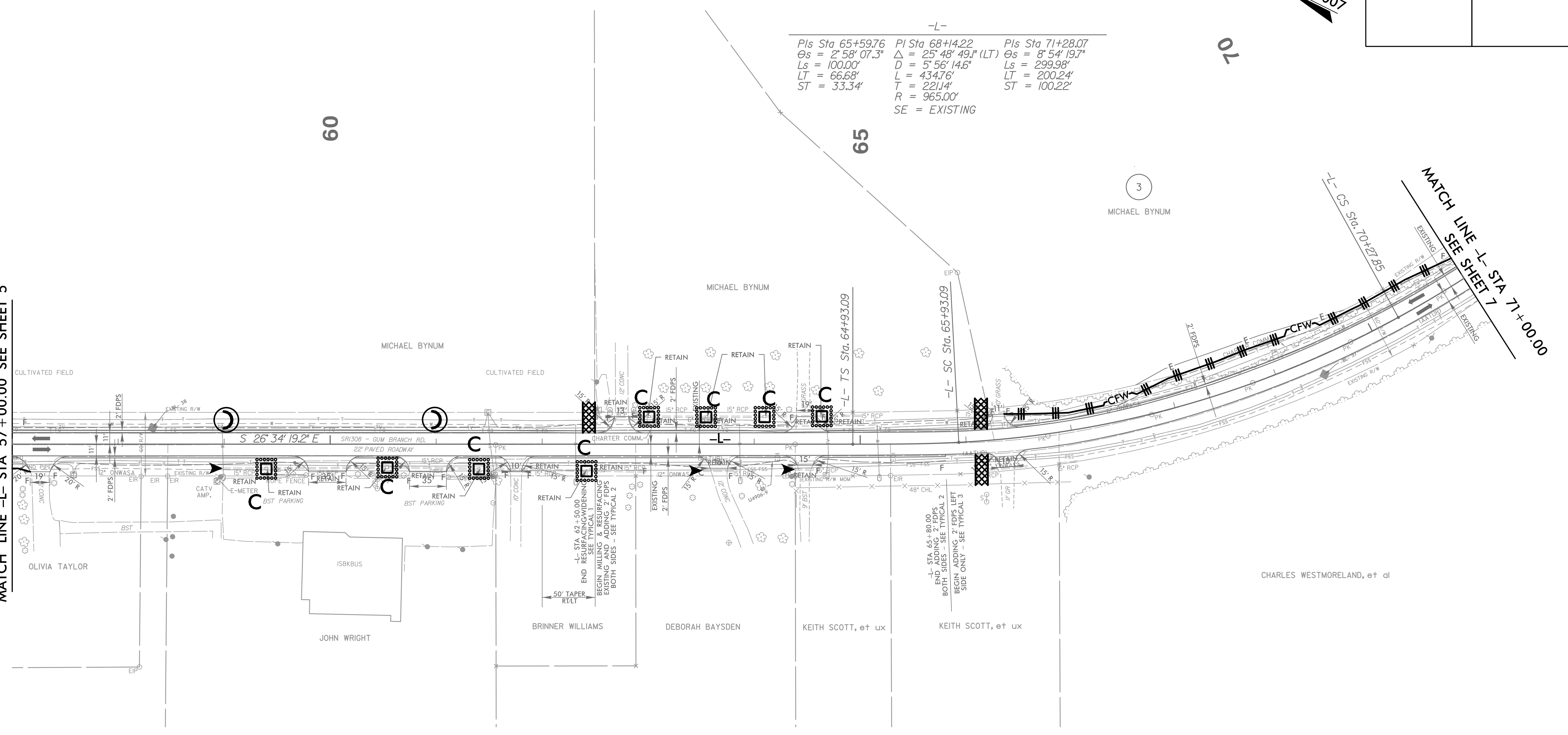


-L-

Pls Sta 65+59.76	Pls Sta 68+14.22	Pls Sta 71+28.07
$\Theta_s = 2^\circ 58' 07.3''$	$\Delta = 25^\circ 48' 49.1''$ (LT)	$\Theta_s = 8^\circ 54' 19.7''$
$L_s = 100.00'$	$D = 5^\circ 56' 14.6''$	$L_s = 299.98'$
$LT = 66.68'$	$L = 434.76'$	$LT = 200.24'$
$ST = 33.34'$	$T = 221.14'$	$ST = 100.22'$
	$R = 965.00'$	

SE = EXISTING

MATCH LINE -L- STA 57+00.00 SEE SHEET 5



DESIGN EXCEPTION REQUESTED FOR LANE WIDTHS (11') AND USABLE SHOULDER (4' MINIMUM)

NOTE: ALL DRIVEWAY RADII ARE 10' UNLESS OTHERWISE NOTED

FOR -L- PROFILE, SEE SHEET 27 AND 28

1/1/2009 10:56:06 AM EC-6_Const-6.dgn