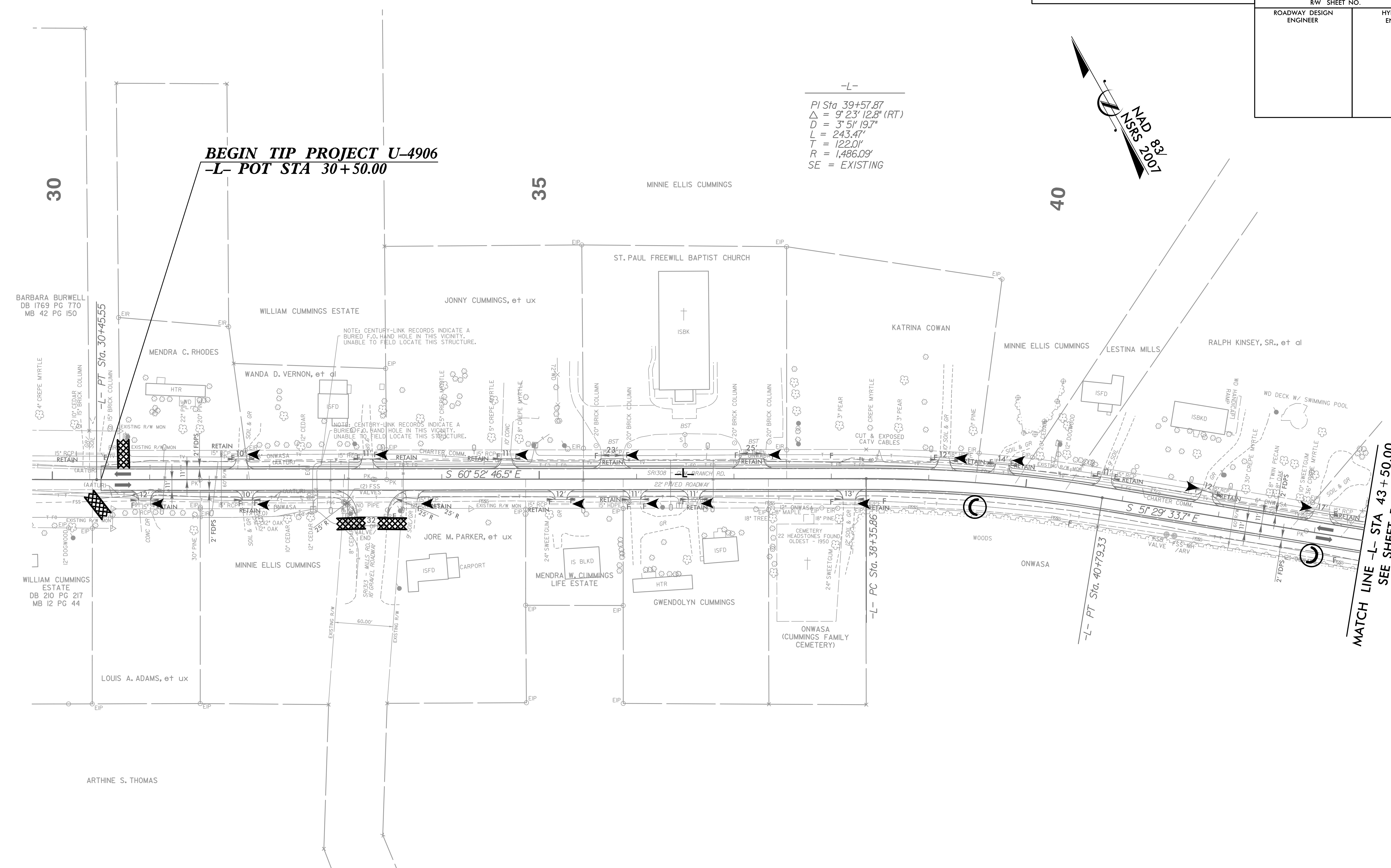
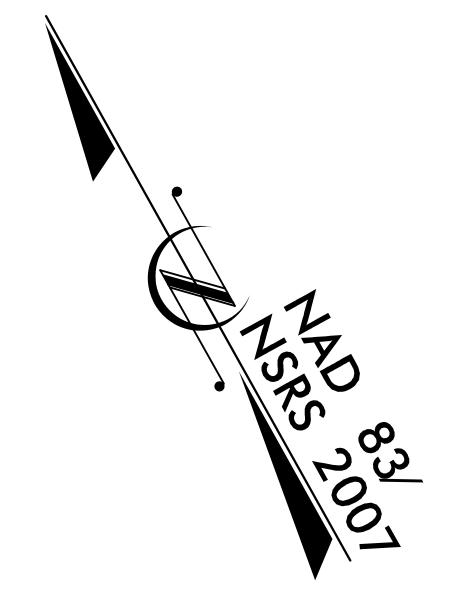


5/14/99

PROJECT REFERENCE NO.	SHEET NO.
U-4906	EC-27/CONST.4
RW SHEET NO.	
ROADWAY DESIGN ENGINEER	HYDRAULICS ENGINEER

-L-  
 PI Sta 39+57.87  
 $\Delta = 9' 23' 12.8''$  (RT)  
 $D = 3' 51' 19.7''$   
 $L = 243.47'$   
 $T = 122.01'$   
 $R = 1,486.09'$   
 SE = EXISTING



**BEGIN TIP PROJECT U-4906**  
**-L- POT STA 30+50.00**

**MATCH LINE -L- STA 43+50.00**  
**SEE SHEET 5**

DESIGN EXCEPTION REQUESTED FOR LANE WIDTHS (11') AND USABLE SHOULDER (4' MINIMUM)

NOTE: ALL DRIVEWAY RADII ARE 10' UNLESS OTHERWISE NOTED.

FOR -L- PROFILE, SEE SHEET 27

1/1/2008 10:06:06-EC-4\_Const-4.dgn  
 HNTB