

8.17.99

REVISIONS

2017-09-14 RW Revision - Property Lines for Parcel 89 & 90, were Updated, Revised PUE, on Parcel 70, Revised TCE on Parcels 90, 91 & 92, Revised ROW on Parcel 92, Removed TCE from Parcels 101, 88 & 112, Added PUE, on Parcels 87, 88, 89, 90 & 92, DIM

2017-09-19 RW Revision - Revised TCE on Parcel 77, C&G

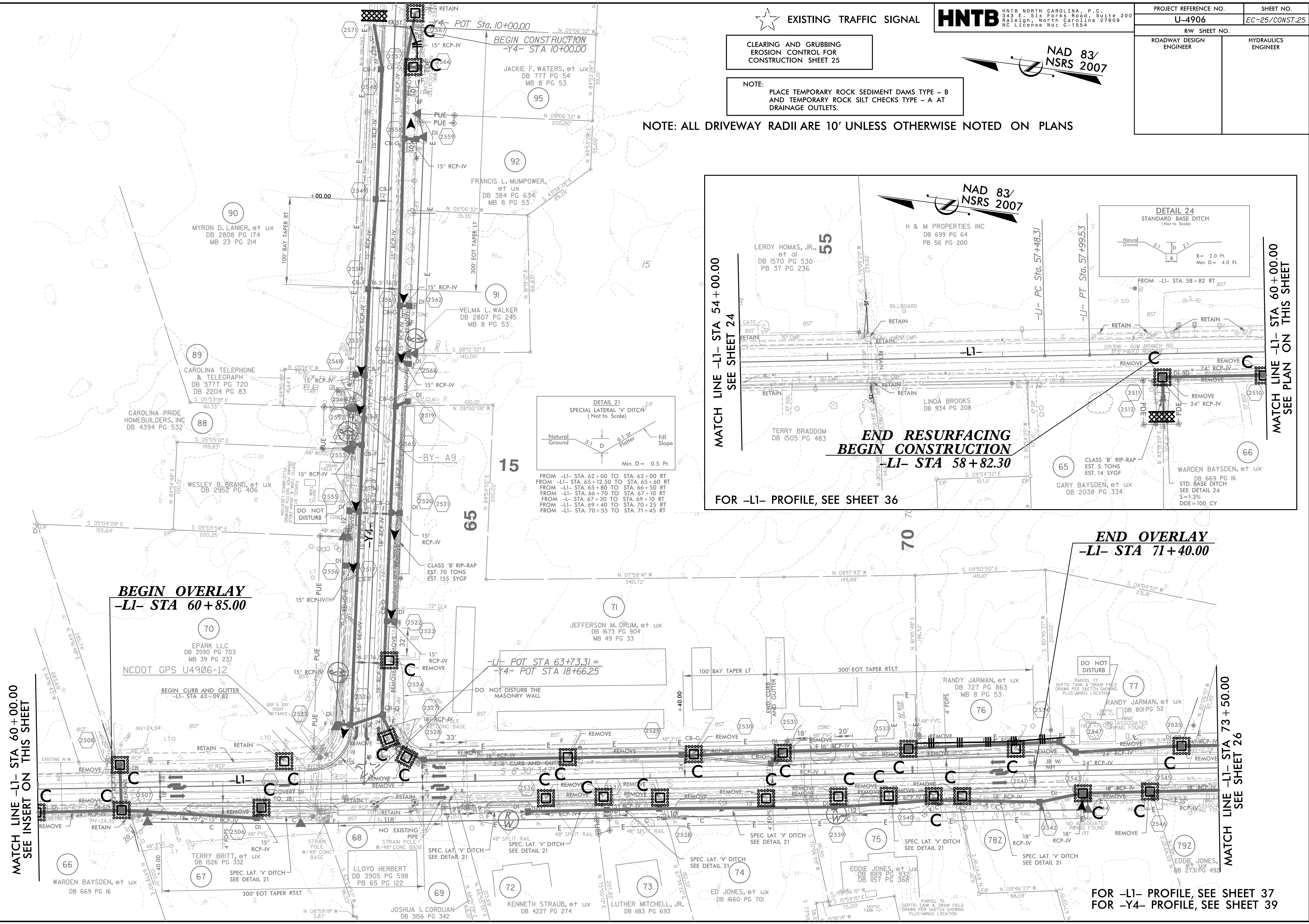
2018-04-25 RW Revision - Revised TCE on Parcel 77, C&G

2018-11-28 RW Revision - Changed ROW to TCE on Parcel 70, 88, 90, 91 & 92, Removed TCE on Parcel 87, 89 & 90, Revised PUE, on Parcel 89, Added Parcel 95, due to TCE around drainage structure 2566, Added TDE to Parcels 70, 87, 88, 89, 90, Removed PUE on Parcel 87, C&G

2018-12-12 RW Revision - Revised TCE to ROW on Parcel 70, 88, 91 & 92, Added PUE on Parcel 70, 88, Revised TCE on Parcel 91 and 92, C&G

2021-04-14 RW Revision - Revised TCE to ROW on Parcel 78 and 92, DIM

5/18/2021 EC-25-Const-25.dgn



EXISTING TRAFFIC SIGNAL

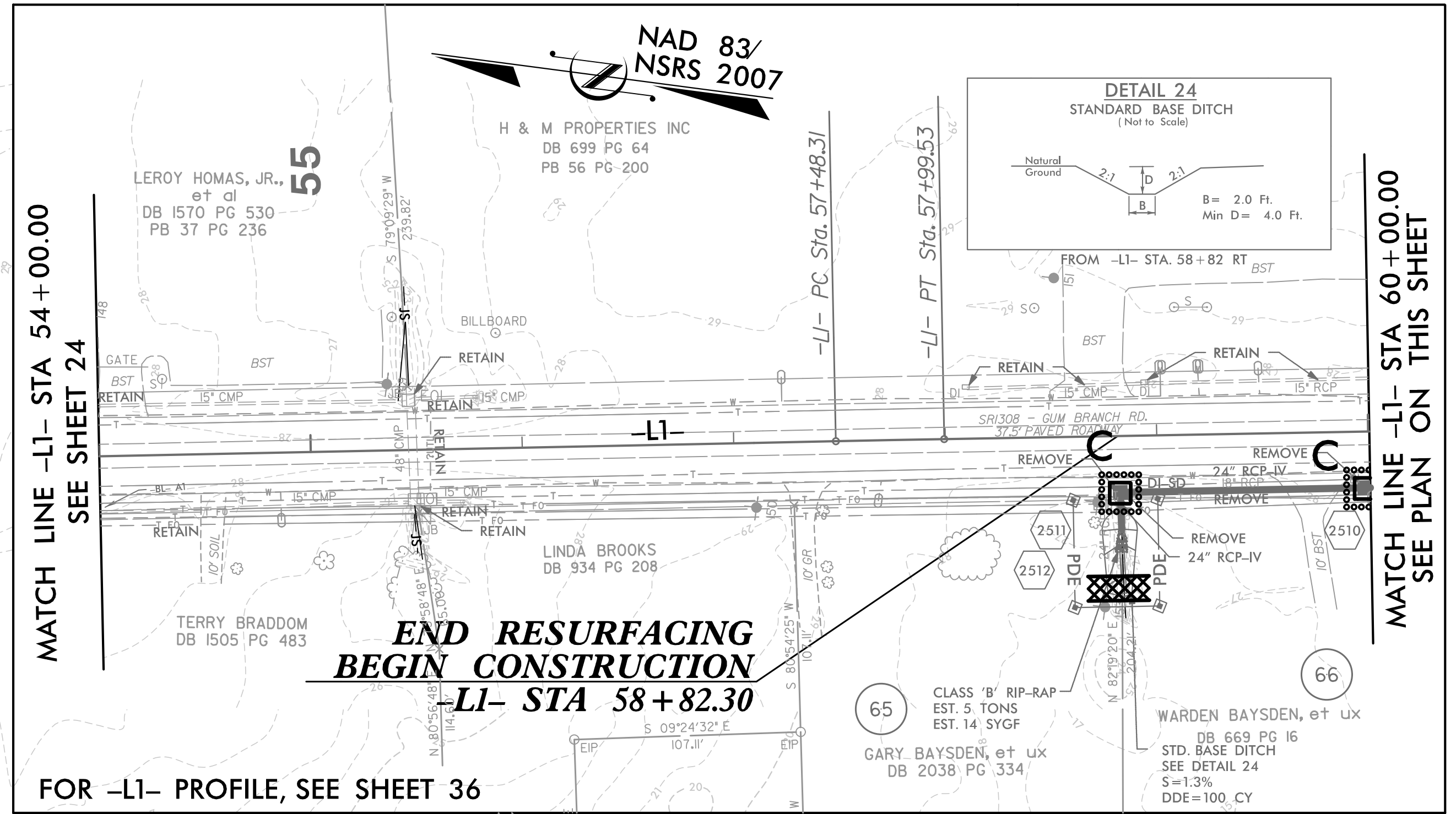
HNTB HNTB NORTH CAROLINA, P.C.
343 E. Six Forks Road, Suite 200
Raleigh, North Carolina 27609
NC License No: C-1554

PROJECT REFERENCE NO.	SHEET NO.
U-4906	EC-25/CONST.25
RW SHEET NO.	
ROADWAY DESIGN ENGINEER	HYDRAULICS ENGINEER

CLEARING AND GRUBBING
EROSION CONTROL FOR
CONSTRUCTION SHEET 25

NOTE:
PLACE TEMPORARY ROCK SEDIMENT DAMS TYPE - B
AND TEMPORARY ROCK SILT CHECKS TYPE - A AT
DRAINAGE OUTLETS.

NOTE: ALL DRIVEWAY RADII ARE 10' UNLESS OTHERWISE NOTED ON PLANS



BEGIN OVERLAY
-LI- STA 60+85.00

END OVERLAY
-LI- STA 71+40.00

MATCH LINE -LI- STA 60+00.00
SEE INSERT ON THIS SHEET

MATCH LINE -LI- STA 73+50.00
SEE SHEET 26

FOR -LI- PROFILE, SEE SHEET 37
FOR -Y4- PROFILE, SEE SHEET 39