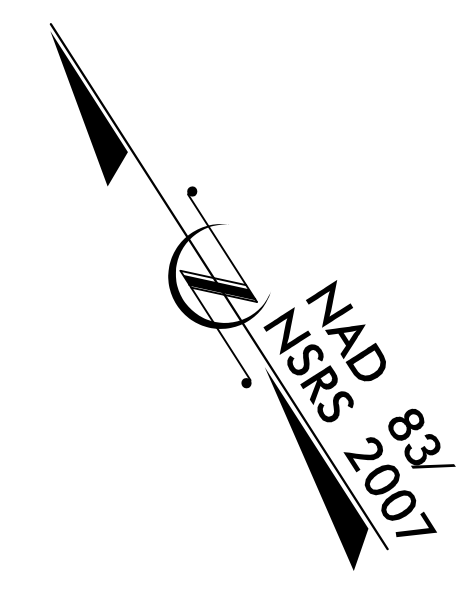


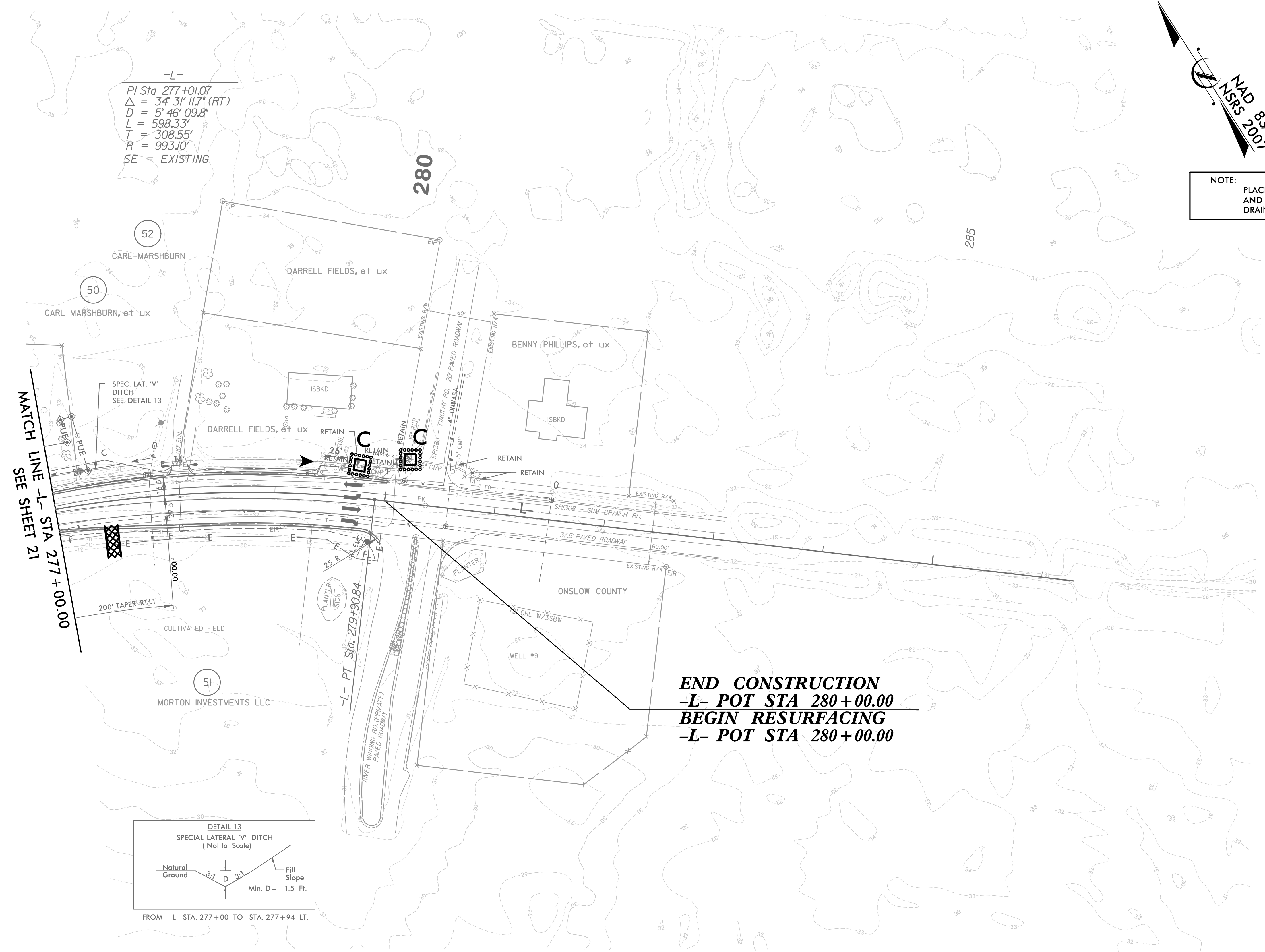
8/17/99

PROJECT REFERENCE NO.	SHEET NO.
U-4906	EC-22/CONST.22
RW SHEET NO.	
ROADWAY DESIGN ENGINEER	HYDRAULICS ENGINEER



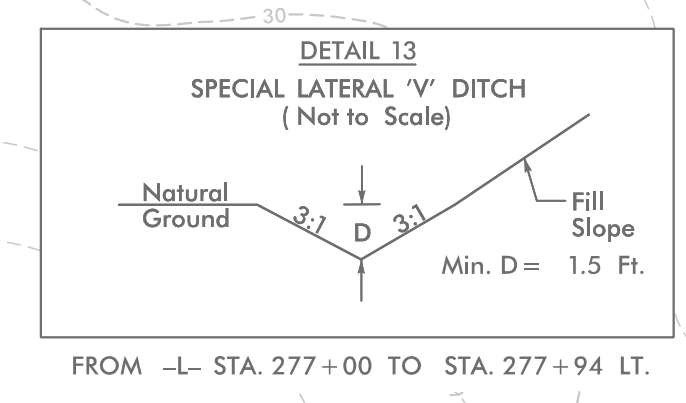
NOTE:
 PLACE TEMPORARY ROCK SEDIMENT DAMS TYPE - B
 AND TEMPORARY ROCK SILT CHECKS TYPE - A AT
 DRAINAGE OUTLETS.

CLEARING AND GRUBBING
 EROSION CONTROL FOR
 CONSTRUCTION SHEET 22



-L-
 PI Sta 277+01.07
 $\Delta = 34' 31'' 11.7'' (RT)$
 $D = 5' 46'' 09.8''$
 $L = 598.33'$
 $T = 308.55'$
 $R = 993.10'$
 SE = EXISTING

END CONSTRUCTION
-L- POT STA 280+00.00
BEGIN RESURFACING
-L- POT STA 280+00.00



DESIGN EXCEPTION REQUESTED FOR LANE WIDTHS (11') AND USABLE SHOULDER (4' MINIMUM)

NOTE: ALL DRIVEWAY RADII ARE 10' UNLESS OTHERWISE NOTED ON PLANS

FOR -L- PROFILE, SEE SHEET 35

1/1/2009 11:06:56 AM EC-22_Const-22.dgn