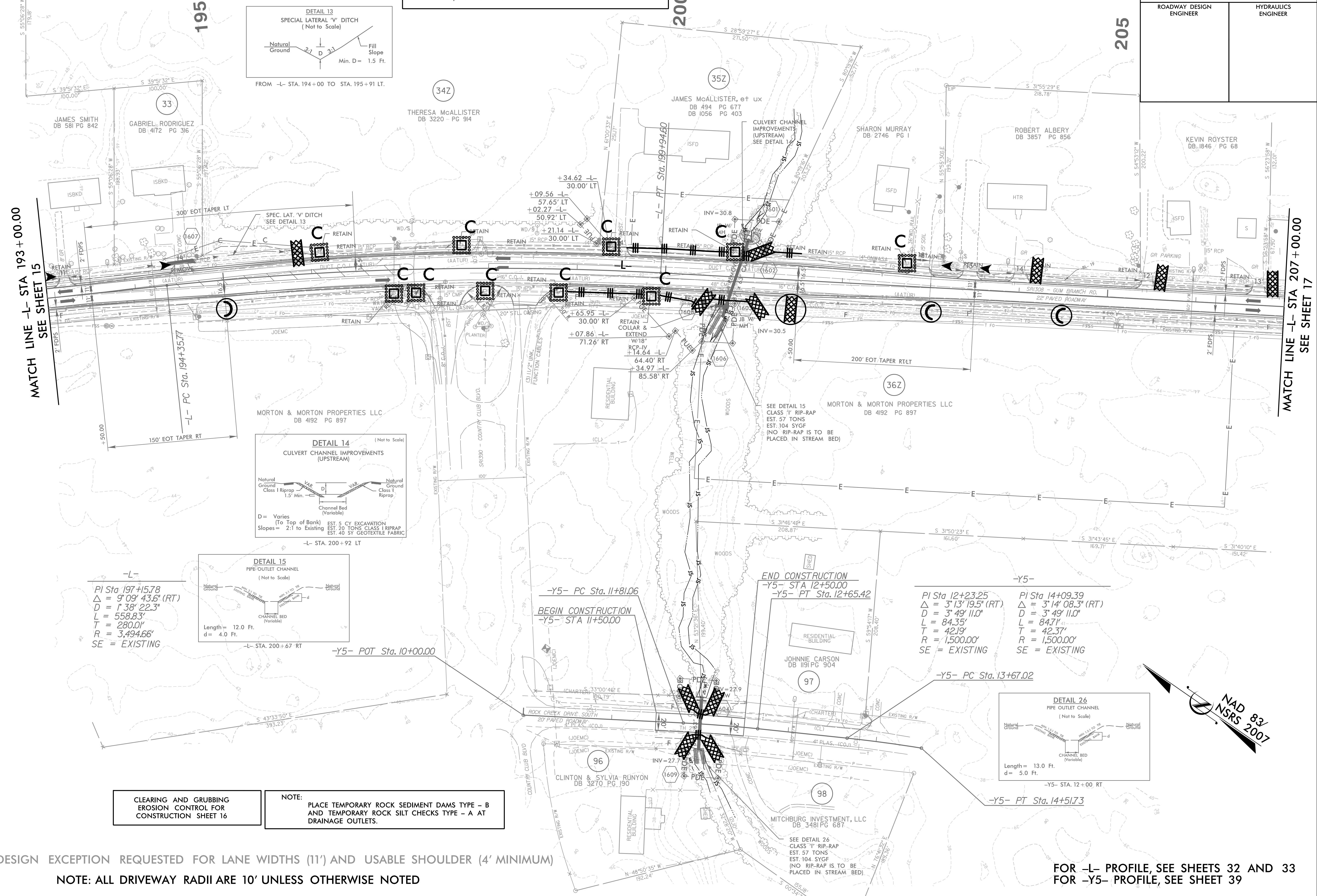


5/14/99

PROJECT REFERENCE NO.	SHEET NO.
U-4906	EC-16/CONST.16
RW SHEET NO.	
ROADWAY DESIGN ENGINEER	HYDRAULICS ENGINEER

NOTE: UTILIZE COIR FIBER MATTING ADJACENT TO WETLANDS /JURISDICTIONAL AREAS, AND AS DIRECTED



MATCH LINE -L- STA 207 + 00.00  
SEE SHEET 17

-L-  
 PI Sta 197+15.78  
 $\Delta = 9^{\circ}09'43.6''$  (RT)  
 D = 1'38'22.3"  
 L = 558.83'  
 T = 280.01'  
 R = 3,494.66'  
 SE = EXISTING

-Y5- PC Sta. 11+81.06  
 BEGIN CONSTRUCTION  
 -Y5- STA 11+50.00

END CONSTRUCTION  
 -Y5- STA 12+50.00  
 -Y5- PT Sta. 12+65.42

PI Sta 12+23.25  
 $\Delta = 3^{\circ}13'19.5''$  (RT)  
 D = 3'49'11.0"  
 L = 84.35'  
 T = 42.19'  
 R = 1,500.00'  
 SE = EXISTING

PI Sta 14+09.39  
 $\Delta = 3^{\circ}14'08.3''$  (RT)  
 D = 3'49'11.0"  
 L = 84.71'  
 T = 42.37'  
 R = 1,500.00'  
 SE = EXISTING

CLEARING AND GRUBBING  
 EROSION CONTROL FOR  
 CONSTRUCTION SHEET 16

NOTE: PLACE TEMPORARY ROCK SEDIMENT DAMS TYPE - B  
 AND TEMPORARY ROCK SILT CHECKS TYPE - A AT  
 DRAINAGE OUTLETS.

DESIGN EXCEPTION REQUESTED FOR LANE WIDTHS (11') AND USABLE SHOULDER (4' MINIMUM)

NOTE: ALL DRIVEWAY RADII ARE 10' UNLESS OTHERWISE NOTED

FOR -L- PROFILE, SEE SHEETS 32 AND 33  
 FOR -Y5- PROFILE, SEE SHEET 39

5/18/2006 EC-16\_Const-16.dgn