

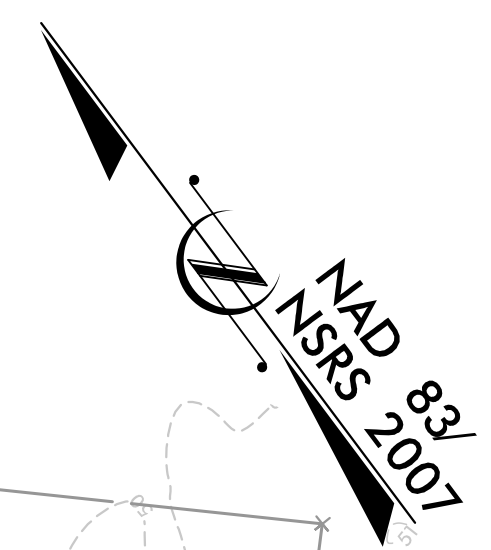
5/14/99

**HNTB** HNTB NORTH CAROLINA, P.C.  
343 E. Six Forks Road, Suite 200  
Raleigh, North Carolina 27609  
NC License No: C-1554

PROJECT REFERENCE NO.	SHEET NO.
U-4906	EC-12/CONST.12
RW SHEET NO.	
ROADWAY DESIGN ENGINEER	HYDRAULICS ENGINEER

CLEARING AND GRUBBING  
EROSION CONTROL FOR  
CONSTRUCTION SHEET 12

NOTE:  
PLACE TEMPORARY ROCK SEDIMENT DAMS TYPE - B  
AND TEMPORARY ROCK SILT CHECKS TYPE - A AT  
DRAINAGE OUTLETS.

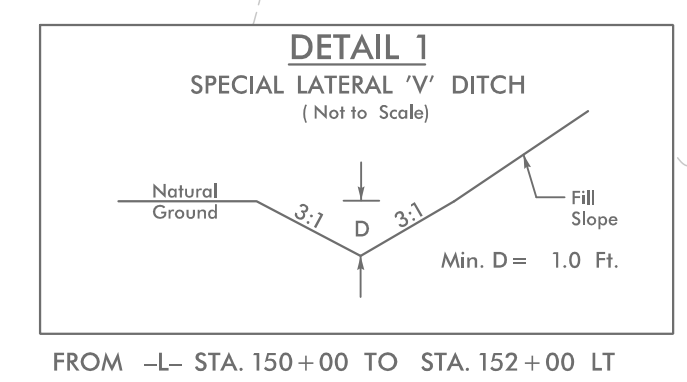
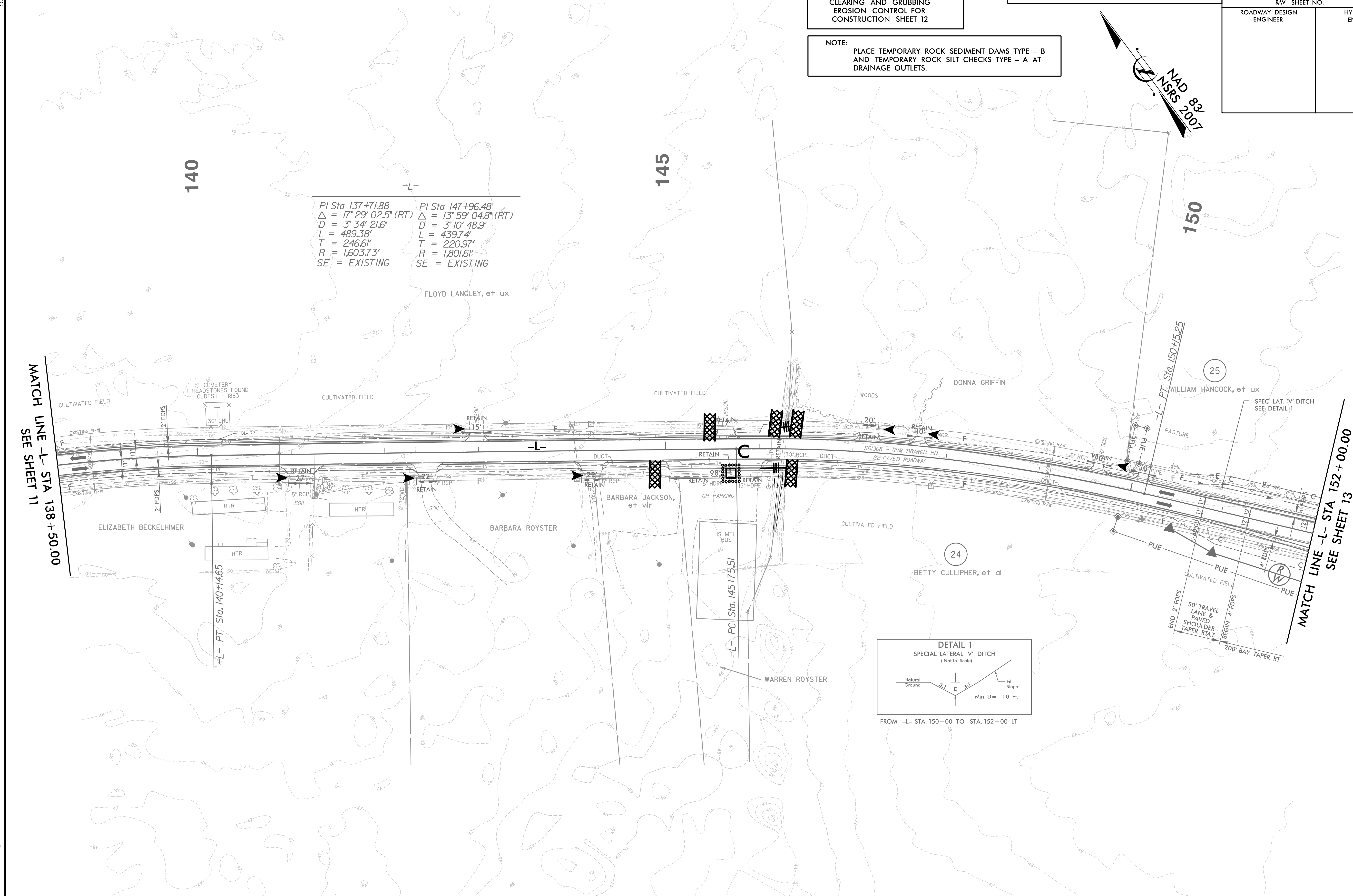


PI Sta 137+71.88 Δ = 17° 29' 02.5" (RT) D = 3' 34' 21.6" L = 489.38' T = 246.61' R = 1,603.73' SE = EXISTING	PI Sta 147+96.48 Δ = 13° 59' 04.8" (RT) D = 3' 10' 48.9" L = 439.74' T = 220.97' R = 1,801.61' SE = EXISTING
--	--

FLOYD LANGLEY, et ux

MATCH LINE -L- STA 138 + 50.00  
SEE SHEET 11

MATCH LINE -L- STA 152 + 00.00  
SEE SHEET 13



DESIGN EXCEPTION REQUESTED FOR LANE WIDTHS (11') AND USABLE SHOULDER (4' MINIMUM)

NOTE: ALL DRIVEWAY RADII ARE 10' UNLESS OTHERWISE NOTED

FOR -L- PROFILE, SEE SHEETS 30 AND 31

1/11/2006 12:06:56 EC-12\_Const+12.dgn