

8/17/99

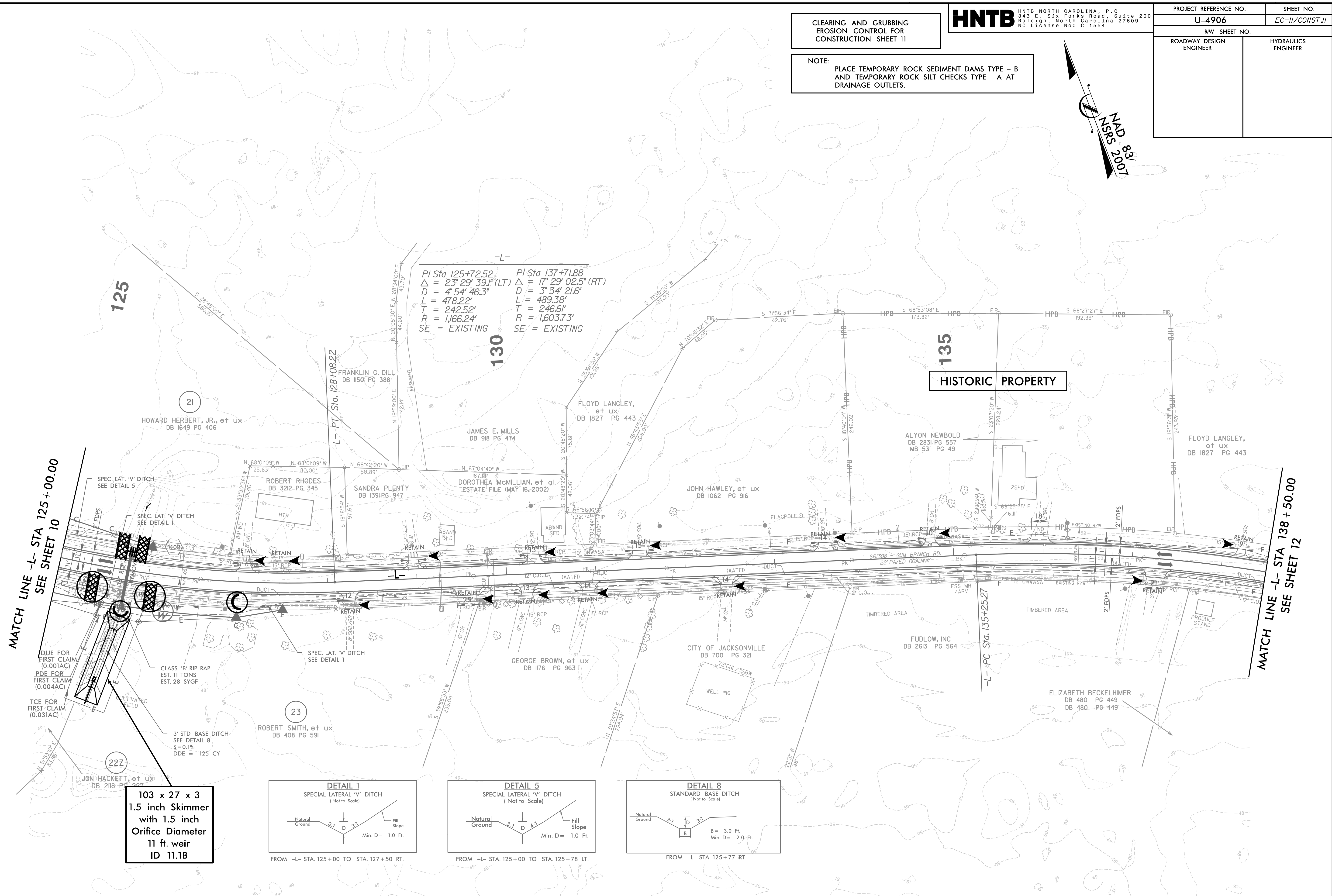
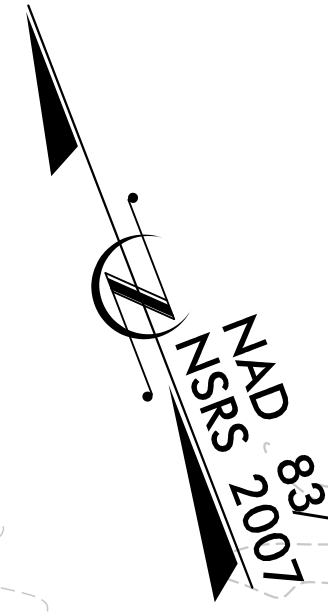
5/18/2021 10:06:56 EC-11\_Const-11.dgn

CLEARING AND GRUBBING  
EROSION CONTROL FOR  
CONSTRUCTION SHEET 11

**HNTB** HNTB NORTH CAROLINA, P.C.  
343 E. Six Forks Road, Suite 200  
Raleigh, North Carolina 27609  
NC License No: C-1554

PROJECT REFERENCE NO. <b>U-4906</b>	SHEET NO. <b>EC-11/CONST.11</b>
RW SHEET NO.	
ROADWAY DESIGN ENGINEER	HYDRAULICS ENGINEER

NOTE:  
PLACE TEMPORARY ROCK SEDIMENT DAMS TYPE - B  
AND TEMPORARY ROCK SILT CHECKS TYPE - A AT  
DRAINAGE OUTLETS.



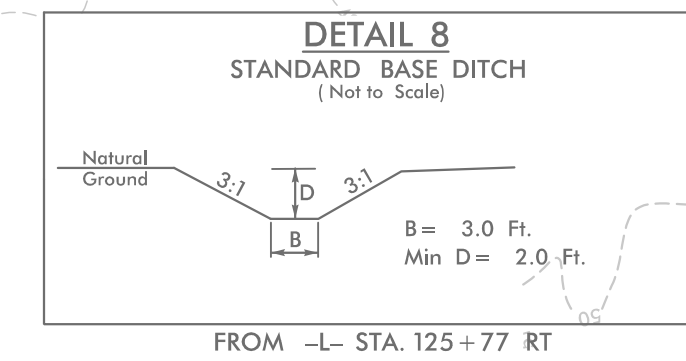
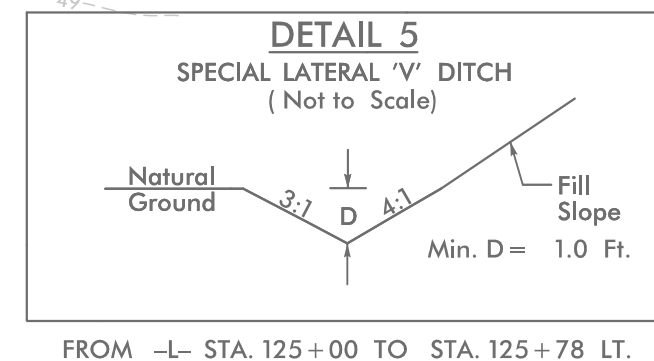
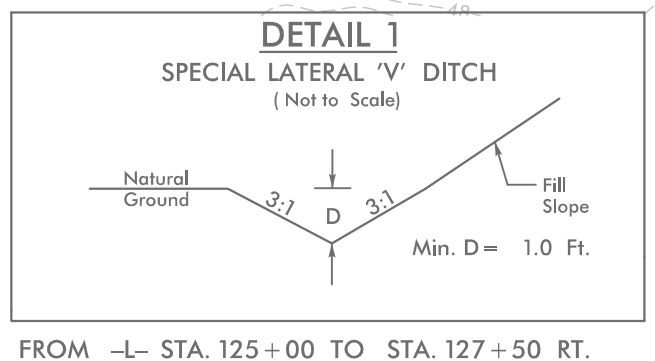
$PI\ Sta\ 125+72.52$   
 $\Delta = 23^\circ 29' 39.1'' (LT)$   
 $D = 4' 54' 46.3''$   
 $L = 478.22'$   
 $T = 242.52'$   
 $R = 1,663.24'$   
 $SE = EXISTING$

$PI\ Sta\ 137+71.88$   
 $\Delta = 17^\circ 29' 02.5'' (RT)$   
 $D = 3' 34' 21.6''$   
 $L = 489.38'$   
 $T = 246.61'$   
 $R = 1,603.73'$   
 $SE = EXISTING$

MATCH LINE -L- STA 125+00.00  
SEE SHEET 10

MATCH LINE -L- STA 138+50.00  
SEE SHEET 12

103 x 27 x 3  
1.5 inch Skimmer  
with 1.5 inch  
Orifice Diameter  
11 ft. weir  
ID 11.1B



DESIGN EXCEPTION REQUESTED FOR LANE WIDTHS (11') AND USABLE SHOULDER (4' MINIMUM)  
NOTE: ALL DRIVEWAY RADII ARE 10' UNLESS OTHERWISE NOTED

FOR -L- PROFILE, SEE SHEET 30