

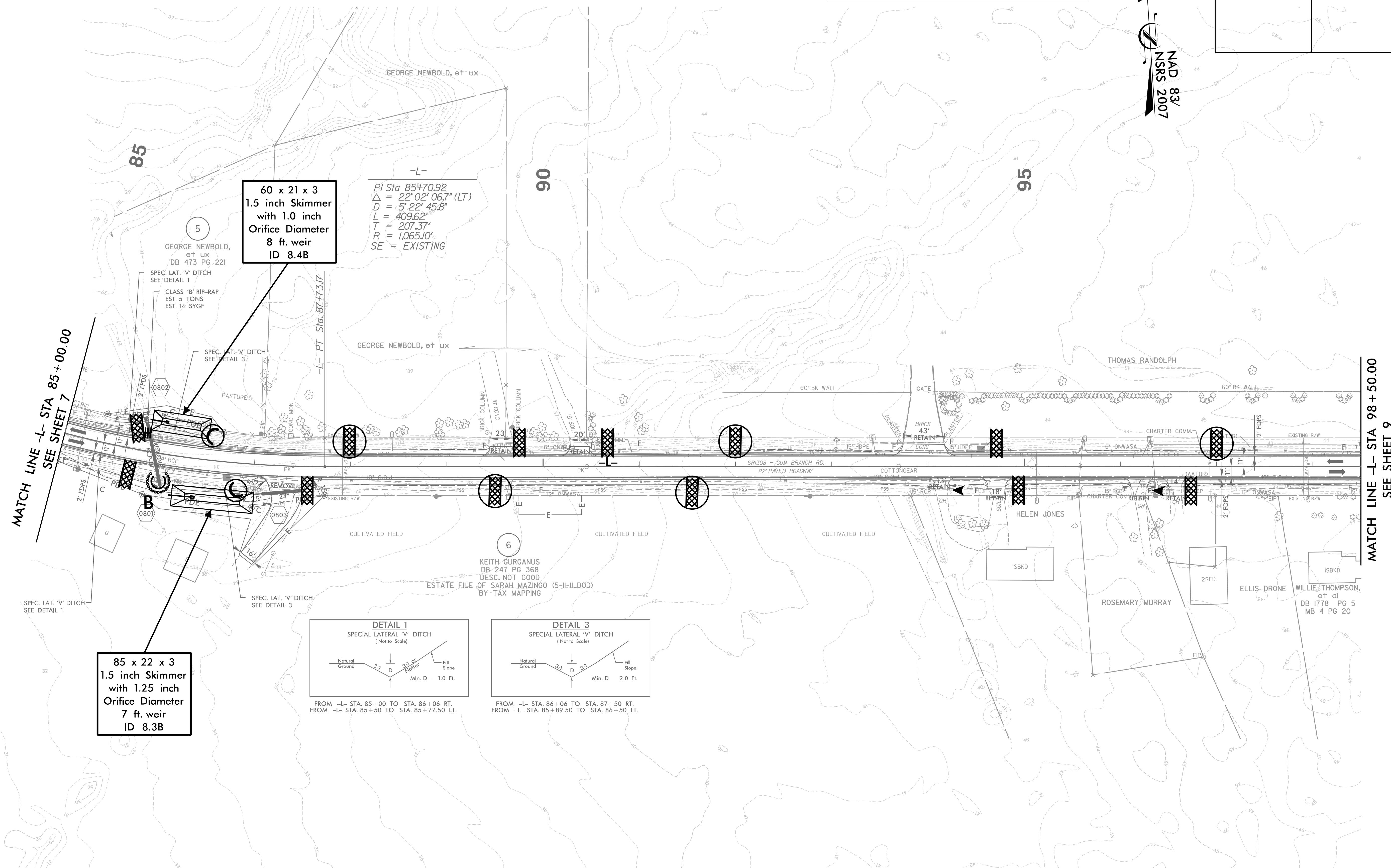
5/14/99

CLEARING AND GRUBBING
EROSION CONTROL FOR
CONSTRUCTION SHEET 8

HNTB HNTB NORTH CAROLINA, P.C.
343 E. SIX FORKS ROAD, SUITE 200
RALEIGH, NORTH CAROLINA 27609
NC LICENSE NO: C-1554

PROJECT REFERENCE NO.	SHEET NO.
U-4906	EC-8/CONST.8
RW SHEET NO.	
ROADWAY DESIGN ENGINEER	HYDRAULICS ENGINEER

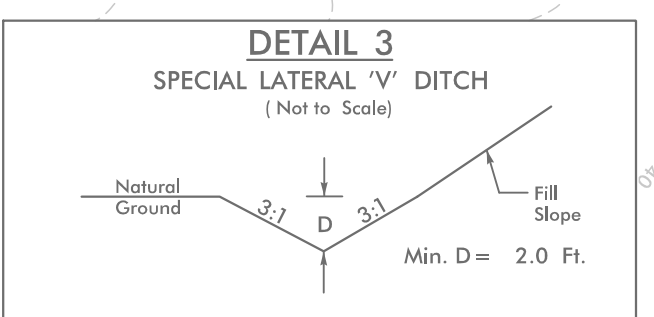
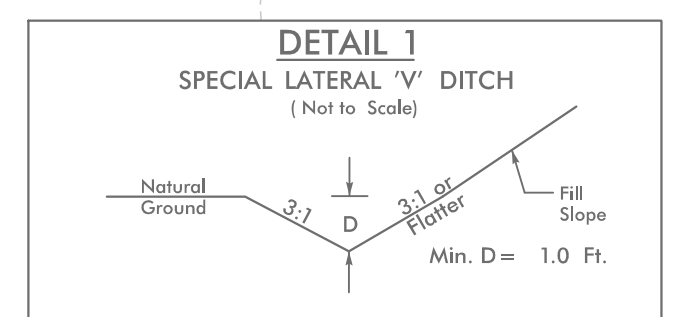
NOTE:
PLACE TEMPORARY ROCK SEDIMENT DAMS TYPE - B
AND TEMPORARY ROCK SILT CHECKS TYPE - A AT
DRAINAGE OUTLETS.



60 x 21 x 3
1.5 inch Skimmer
with 1.0 inch
Orifice Diameter
8 ft. weir
ID 8.4B

-L-
PI Sta 85+70.92
 $\Delta = 22' 02" 06.7" (LT)$
 $D = 5' 22" 45.8"$
 $L = 409.62'$
 $T = 207.37'$
 $R = 1,065.10'$
SE = EXISTING

85 x 22 x 3
1.5 inch Skimmer
with 1.25 inch
Orifice Diameter
7 ft. weir
ID 8.3B



FROM -L- STA. 85+00 TO STA. 86+06 RT.
FROM -L- STA. 85+50 TO STA. 85+77.50 LT.

FROM -L- STA. 86+06 TO STA. 87+50 RT.
FROM -L- STA. 85+89.50 TO STA. 86+50 LT.

DESIGN EXCEPTION REQUESTED FOR LANE WIDTHS (11') AND USABLE SHOULDER (4' MINIMUM)

NOTE: ALL DRIVEWAY RADII ARE 10' UNLESS OTHERWISE NOTED

FOR -L- PROFILE, SEE SHEET 28 AND 29

1/1/2009 9:06:06-EC-8_Const-8.dgn
HNTB