

5/14/99

1/1/2008 10:06:06-EC-7_Const-7.dgn
HNTB

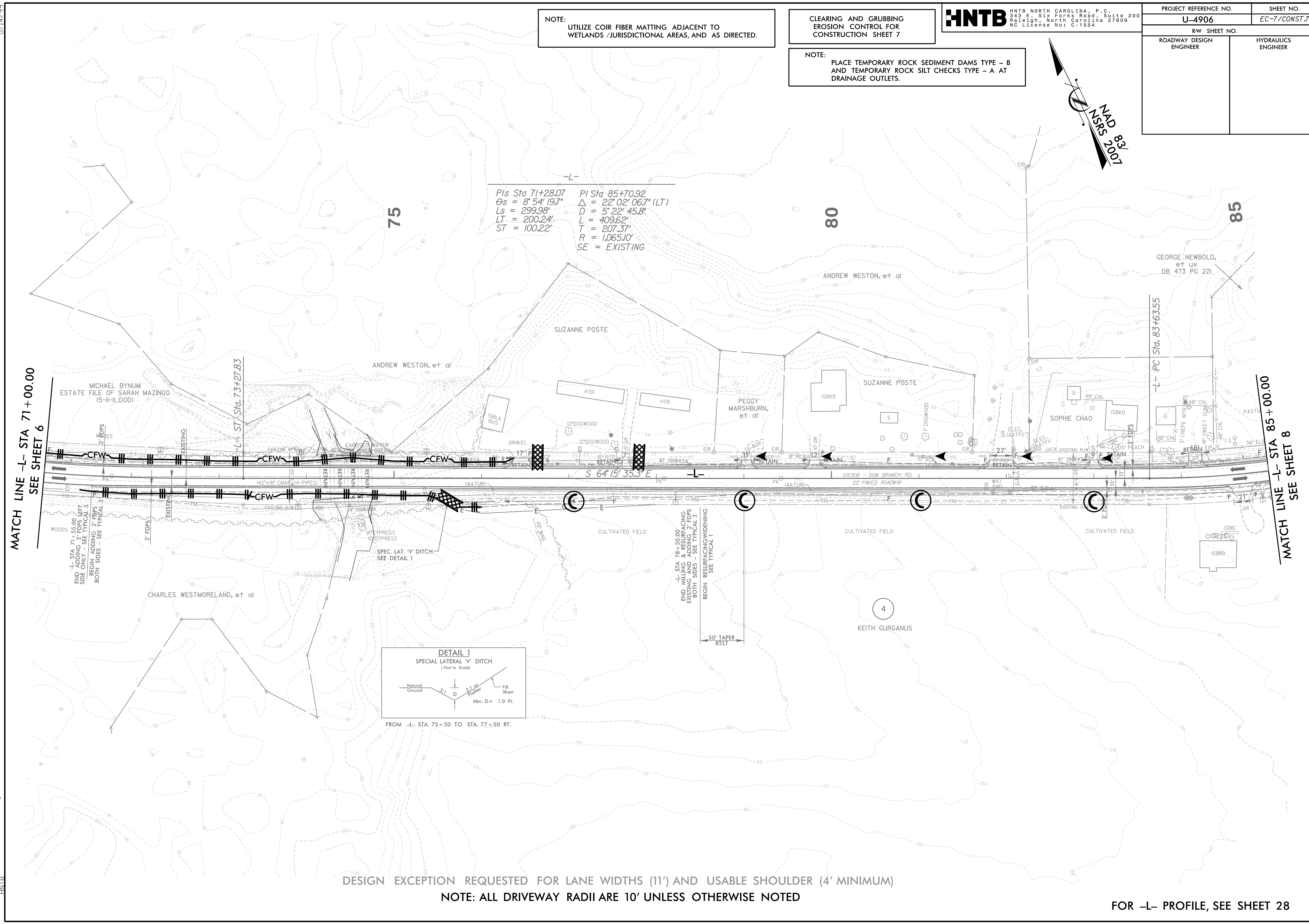
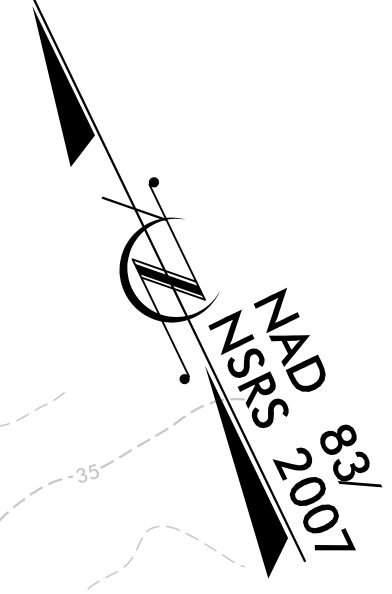
NOTE:
UTILIZE COIR FIBER MATTING ADJACENT TO
WETLANDS / JURISDICTIONAL AREAS, AND AS DIRECTED.

CLEARING AND GRUBBING
EROSION CONTROL FOR
CONSTRUCTION SHEET 7

HNTB HNTB NORTH CAROLINA, P.C.
343 E. Six Forks Road, Suite 200
Raleigh, North Carolina 27609
NC License No: C-1554

PROJECT REFERENCE NO.	SHEET NO.
U-4906	EC-7/CONST.7
RW SHEET NO.	
ROADWAY DESIGN ENGINEER	HYDRAULICS ENGINEER

NOTE:
PLACE TEMPORARY ROCK SEDIMENT DAMS TYPE - B
AND TEMPORARY ROCK SILT CHECKS TYPE - A AT
DRAINAGE OUTLETS.

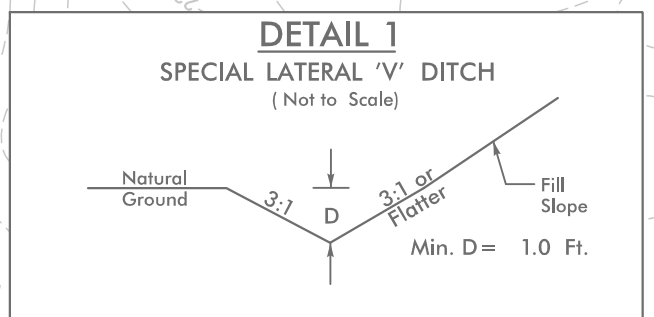


$PI\ Sta\ 71+28.07$
 $\Delta s = 8' 54' 19.7"$
 $Ls = 299.98'$
 $LT = 200.24'$
 $ST = 100.22'$

$PI\ Sta\ 85+70.92$
 $\Delta = 22' 02' 06.7" (LT)$
 $D = 5' 22' 45.8"$
 $L = 409.62'$
 $T = 207.37'$
 $R = 1,065.10'$
 $SE = EXISTING$

MATCH LINE -L- STA 71+00.00
SEE SHEET 6

MATCH LINE -L- STA 85+00.00
SEE SHEET 8



FROM -L- STA. 75+50 TO STA. 77+50 RT.

DESIGN EXCEPTION REQUESTED FOR LANE WIDTHS (11') AND USABLE SHOULDER (4' MINIMUM)
NOTE: ALL DRIVEWAY RADII ARE 10' UNLESS OTHERWISE NOTED

FOR -L- PROFILE, SEE SHEET 28