


SURVEY CONTROL SHEET

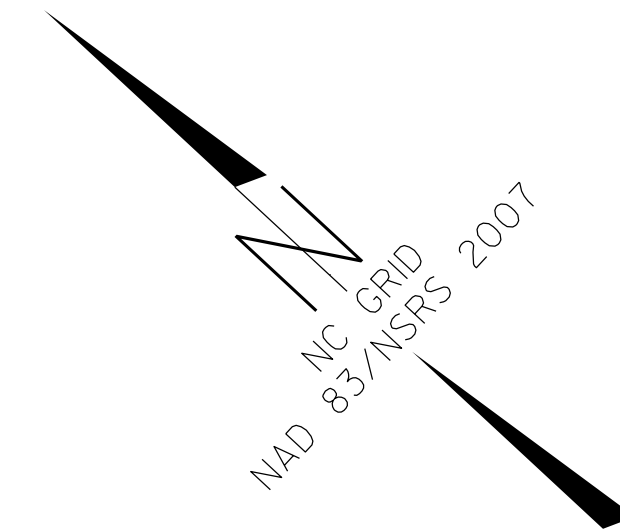
W/EXISTING CENTERLINE ALIGNMENTS PRIOR TO CONSTRUCTION

PROJECT REFERENCE NO. U-4906	SHEET NO. RW02C-3
Location and Surveys	
LOCATION & SURVEYS DIVISION 3 5310 BARBADOS BLVD, #102 CASTLE HAYNE, NC 28429 (910) 341-2280	
PROJECT SURVEYOR 	
DOCUMENT NOT CONSIDERED FINAL UNLESS ALL SIGNATURES COMPLETED	

EY3									
POINT	N	E	BEARING	DIST	DELTA	D	L	T	R
POT	400215.639	2461167.081							
LINE			S 05°51'16.8" W	366.46					
PC	399851.087	2461129.700							
CURVE			S 30°28'42.3" W	333.33	49°14'51.0"(RT)	14°19'26.2"	343.81	183.33	400.00
PT	399563.820	2460960.632							
LINE			S 55°06'07.8" W	298.15					
POT	399393.244	2460716.098							

EY4									
POINT	N	E	BEARING	DIST	DELTA	D	L	T	R
POT	397661.214	2462360.445							
LINE			S 35°53'33.9" W	116.11					
PC	397567.152	2462292.374							
CURVE			S 38°11'33.6" W	252.88	04°35'59.5"(RT)	01°49'06.5"	252.95	126.54	3150.75
PT	397368.403	2462136.015							
LINE			S 40°29'33.4" W	346.43					
POT	397104.943	2461911.058							

EY5				
POINT	N	E	BEARING	DIST
POT	395305.086	2463322.864		
LINE			S 84°52'24.3" W	1106.27
POT	395206.234	2462221.024		

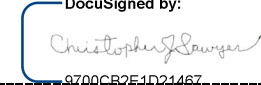


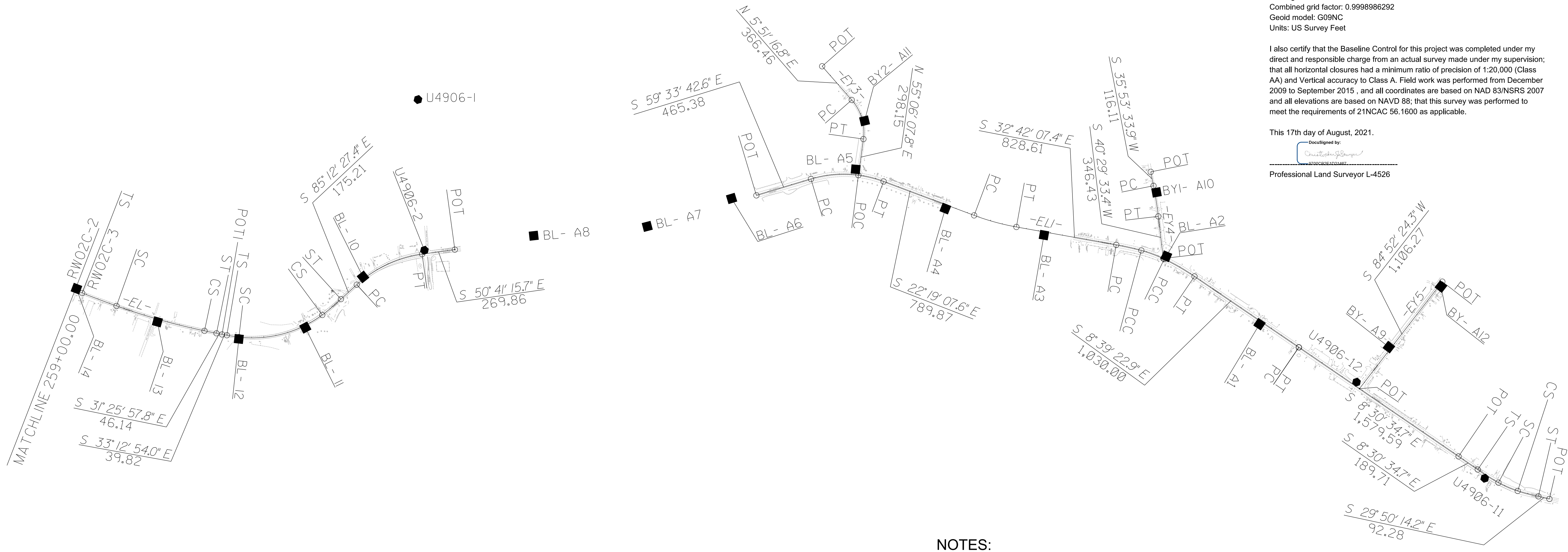
I, CHRISTOPHER J. SAWYER, PLS, certify that the Project Control was [performed/verified] under my supervision from an actual GPS survey made under my supervision and the following information was used to perform the survey:

Class of survey: **AA**
 Type of GPS field procedure: NC-VRS-RTN
 Dates of survey: December 2009 to September 2015
 Datum/Epoch: NAD 83/NSRS 2007
 Published/Fixed-control use: Project Control N/A for RTN
 [Project Control if applicable, N/A for RTN]
 Localized around: U4906-7
 Northing: 413606.2397
 Easting: 2447928.3325
 Combined grid factor: 0.9998986292
 Geoid model: G09NC
 Units: US Survey Feet

I also certify that the Baseline Control for this project was completed under my direct and responsible charge from an actual survey made under my supervision; that all horizontal closures had a minimum ratio of precision of 1:20,000 (Class AA) and Vertical accuracy to Class A. Field work was performed from December 2009 to September 2015, and all coordinates are based on NAD 83/NSRS 2007 and all elevations are based on NAVD 88; that this survey was performed to meet the requirements of 21NCAC 56.1600 as applicable.

This 17th day of August, 2021.

DocuSigned by:

 Professional Land Surveyor L-4526



NOTES:

1. PROJECT CONTROL WAS ESTABLISHED USING GNSS, THE GLOBAL NAVIGATION SATELLITE SYSTEM.
2. THE SURVEY CONTROL DATA FOR THIS PROJECT HAS BEEN COMPILED FROM VARIOUS SOURCES. IF FURTHER INFORMATION REGARDING PROJECT CONTROL IS NEEDED, PLEASE CONTACT THE LOCATION AND SURVEYS UNIT.