


SURVEY CONTROL SHEET

W/EXISTING CENTERLINE ALIGNMENTS PRIOR TO CONSTRUCTION

PROJECT REFERENCE NO. U-4906	SHEET NO. RW02C-2
Location and Surveys	
LOCATION & SURVEYS DIVISION 3 5310 BARBADOS BLVD. #102 CASTLE HAYNE, NC 28429 (910) 341-2280	
PROJECT SURVEYOR 	
DOCUMENT NOT CONSIDERED FINAL UNLESS ALL SIGNATURES COMPLETED	

EY1				
POINT	N	E	BEARING	DIST
POT	411539.138	2451365.293	S 34°56'38.8" W	461.58
LINE				
POT	411160.772	2451100.908		

EY2									
POINT	N	E	BEARING	DIST	DELTA	D	L	T	R
POT	410980.054	2451150.349	S 72°45'54.3" W	167.22					
LINE									
PC	410930.509	2450990.638	S 61°05'54.1" W	413.74	23°20'00.4"(LT)	05°36'02.7"	416.61	211.23	1023.00
CURVE									
PT	410730.546	2450628.430	S 49°25'53.9" W	371.63					
LINE									
POT	410488.856	2450346.130							

I, CHRISTOPHER J. SAWYER, PLS, certify that the Project Control was [performed/verified] under my supervision from an actual GPS survey made under my supervision and the following information was used to perform the survey:

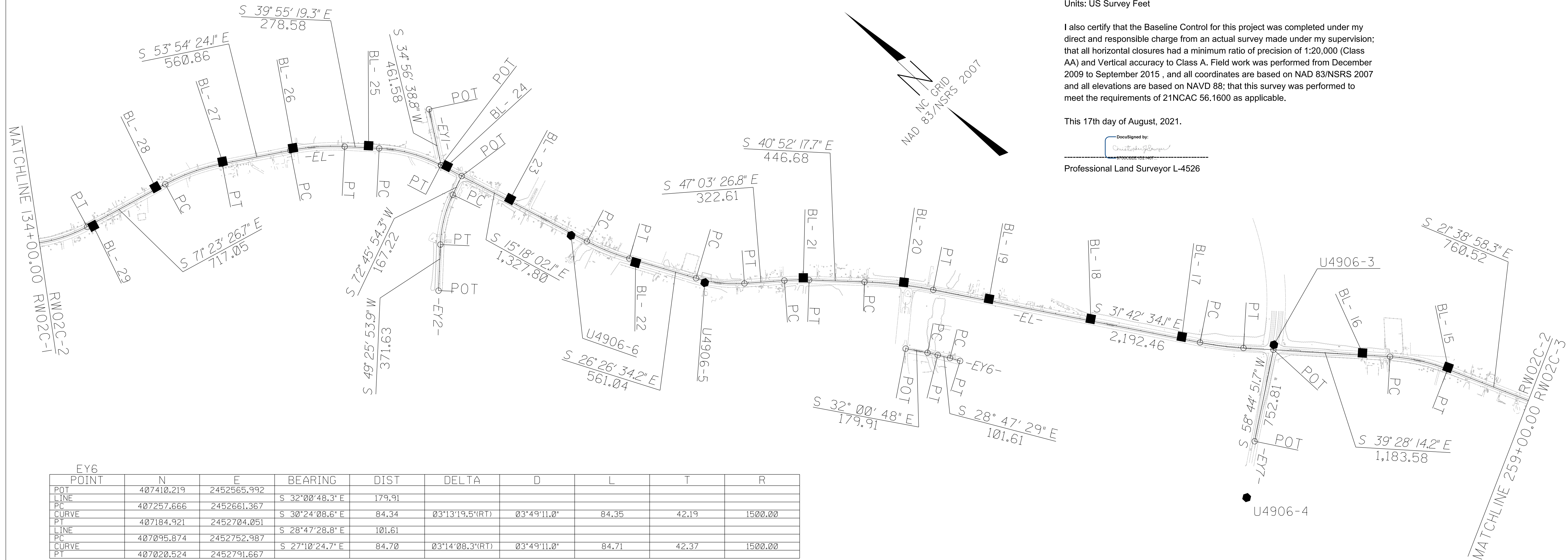
Class of survey: **AA**
 Type of GPS field procedure: NC-VRS-RTN
 Dates of survey: December 2009 to September 2015
 Datum/Epoch: NAD 83/NSRS 2007
 Published/Fixed-control use: Project Control N/A for RTN
 [Project Control if applicable, N/A for RTN]
 Localized around: U4906-7
 Northing: 413606.2397
 Easting: 2447928.3325
 Combined grid factor: 0.9998986292
 Geoid model: G09NC
 Units: US Survey Feet

I also certify that the Baseline Control for this project was completed under my direct and responsible charge from an actual survey made under my supervision; that all horizontal closures had a minimum ratio of precision of 1:20,000 (Class AA) and Vertical accuracy to Class A. Field work was performed from December 2009 to September 2015, and all coordinates are based on NAD 83/NSRS 2007 and all elevations are based on NAVD 88; that this survey was performed to meet the requirements of 21NCAC 56.1600 as applicable.

This 17th day of August, 2021.

DocuSigned by:

 Professional Land Surveyor L-4526



EY6									
POINT	N	E	BEARING	DIST	DELTA	D	L	T	R
POT	407410.219	2452565.992	S 32°00'48.3" E	179.91					
LINE									
PC	407257.666	2452661.367	S 30°24'08.6" E	84.34	03°13'19.5"(RT)	03°49'11.0"	84.35	42.19	1500.00
CURVE									
PT	407184.921	2452704.051	S 28°47'28.8" E	101.61					
LINE									
PC	407095.874	2452752.987	S 27°10'24.7" E	84.70	03°14'08.3"(RT)	03°49'11.0"	84.71	42.37	1500.00
CURVE									
PT	407020.524	2452791.667							

EY7				
POINT	N	E	BEARING	DIST
POT	405229.924	2454576.073	S 58°44'51.7" W	752.81
LINE				
POT	404839.362	2453932.505		

NOTES:

1. PROJECT CONTROL WAS ESTABLISHED USING GNSS, THE GLOBAL NAVIGATION SATELLITE SYSTEM.
2. THE SURVEY CONTROL DATA FOR THIS PROJECT HAS BEEN COMPILED FROM VARIOUS SOURCES. IF FURTHER INFORMATION REGARDING PROJECT CONTROL IS NEEDED, PLEASE CONTACT THE LOCATION AND SURVEYS UNIT.