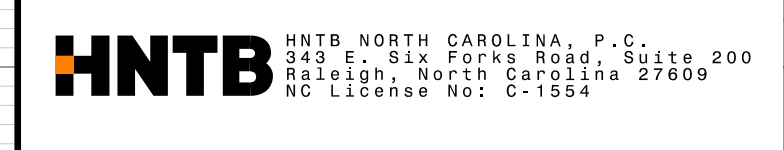
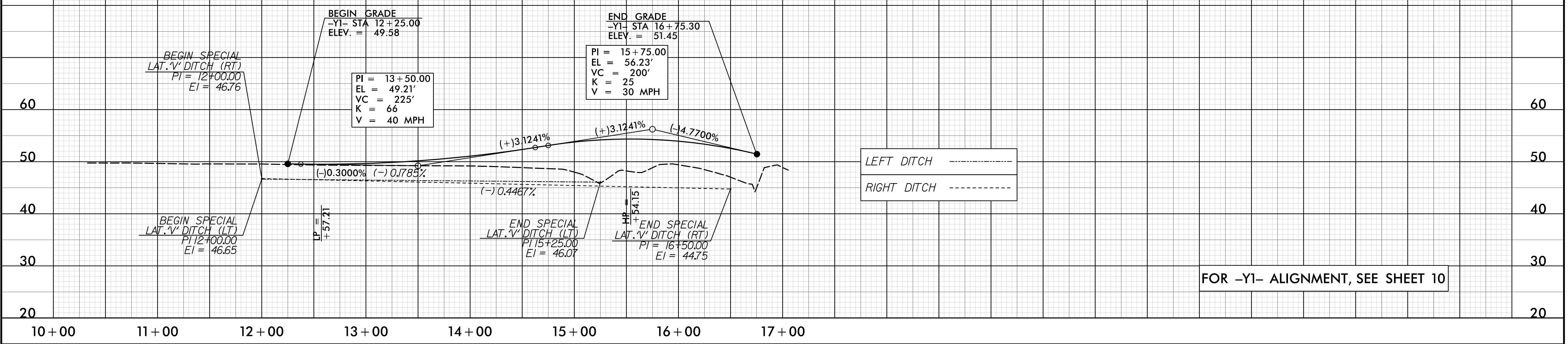


5/28/21



PROJECT REFERENCE NO. U-4906	SHEET NO. 38
ROADWAY DESIGN ENGINEER	HYDRAULICS ENGINEER
DOCUMENT NOT CONSIDERED FINAL UNLESS ALL SIGNATURES COMPLETED	

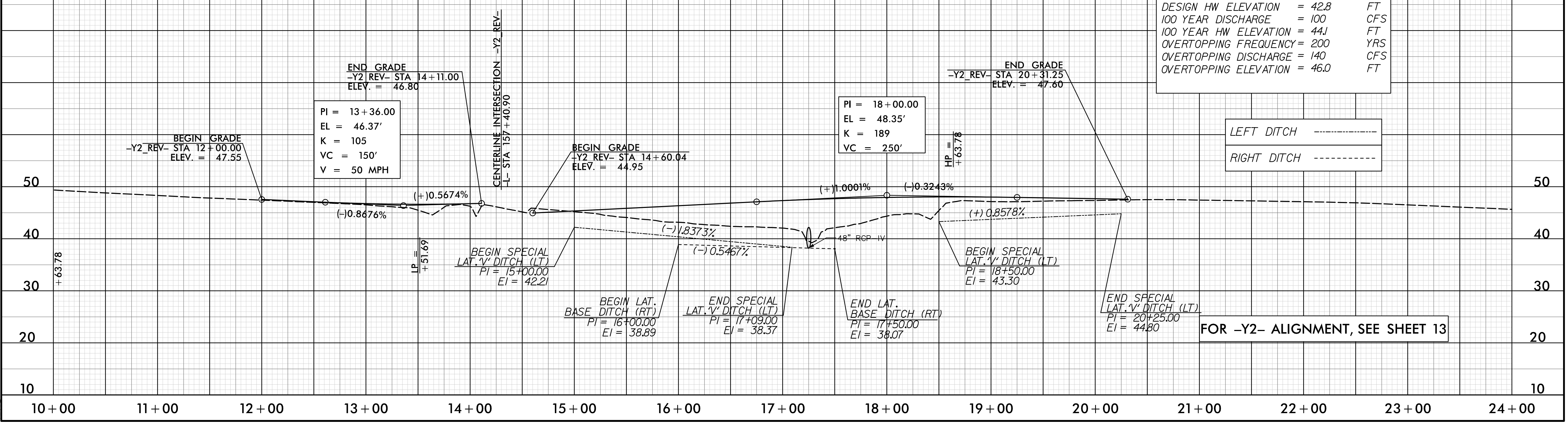
- Y1 -



- Y2_REV -

PIPE HYDRAULIC DATA
-Y2_REV- Sta.17+25 (STR #1306)

DRAINAGE AREA	= 191	AC
DESIGN FREQUENCY	= 25	YRS
DESIGN DISCHARGE	= 65	CFS
DESIGN HW ELEVATION	= 42.8	FT
100 YEAR DISCHARGE	= 100	CFS
100 YEAR HW ELEVATION	= 44J	FT
OVERTOPPING FREQUENCY	= 200	YRS
OVERTOPPING DISCHARGE	= 140	CFS
OVERTOPPING ELEVATION	= 46.0	FT



15-JUN-2021 13:24
N:\Roadway\ProJ\4906_rdy_pf1_psh38.dgn
A:\FILE