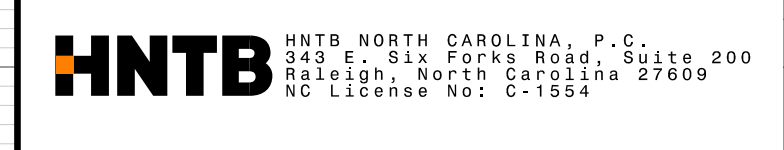


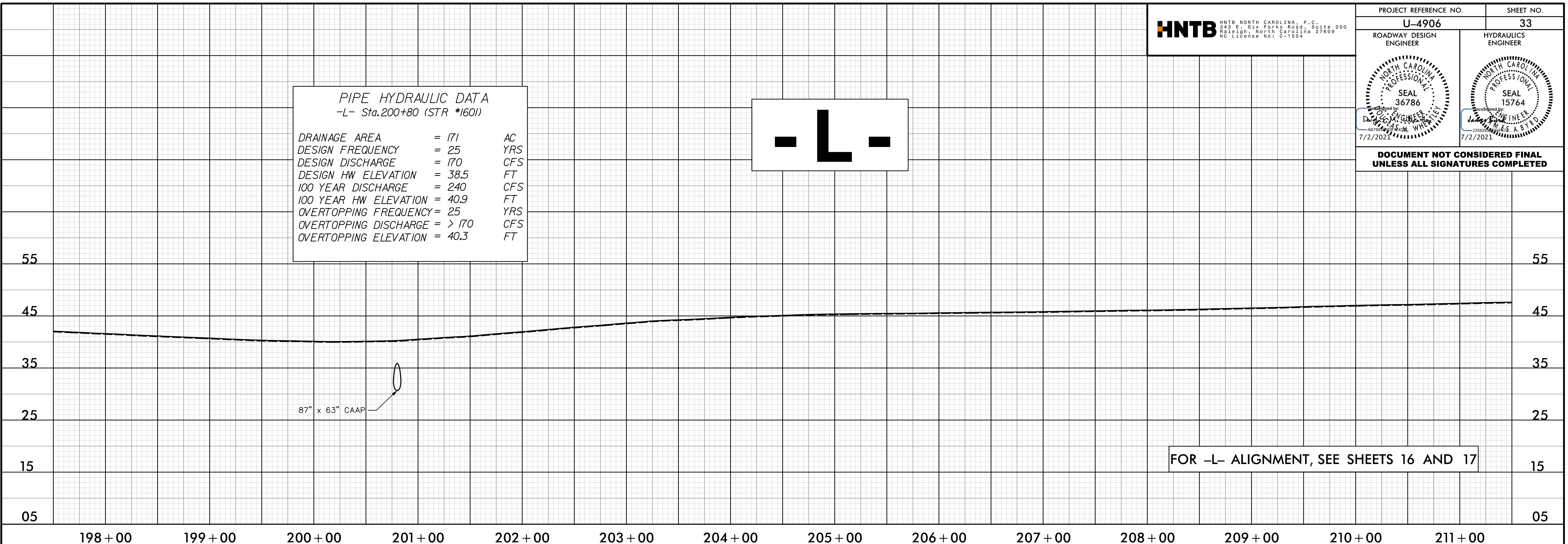
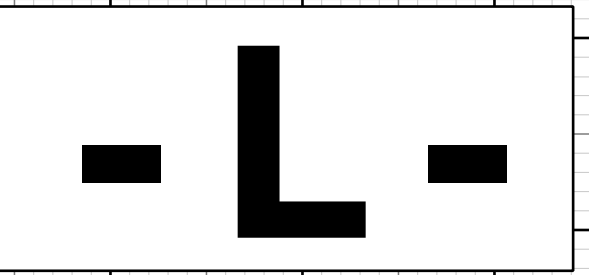
5/28/21



PROJECT REFERENCE NO. U-4906	SHEET NO. 33
ROADWAY DESIGN ENGINEER	HYDRAULICS ENGINEER

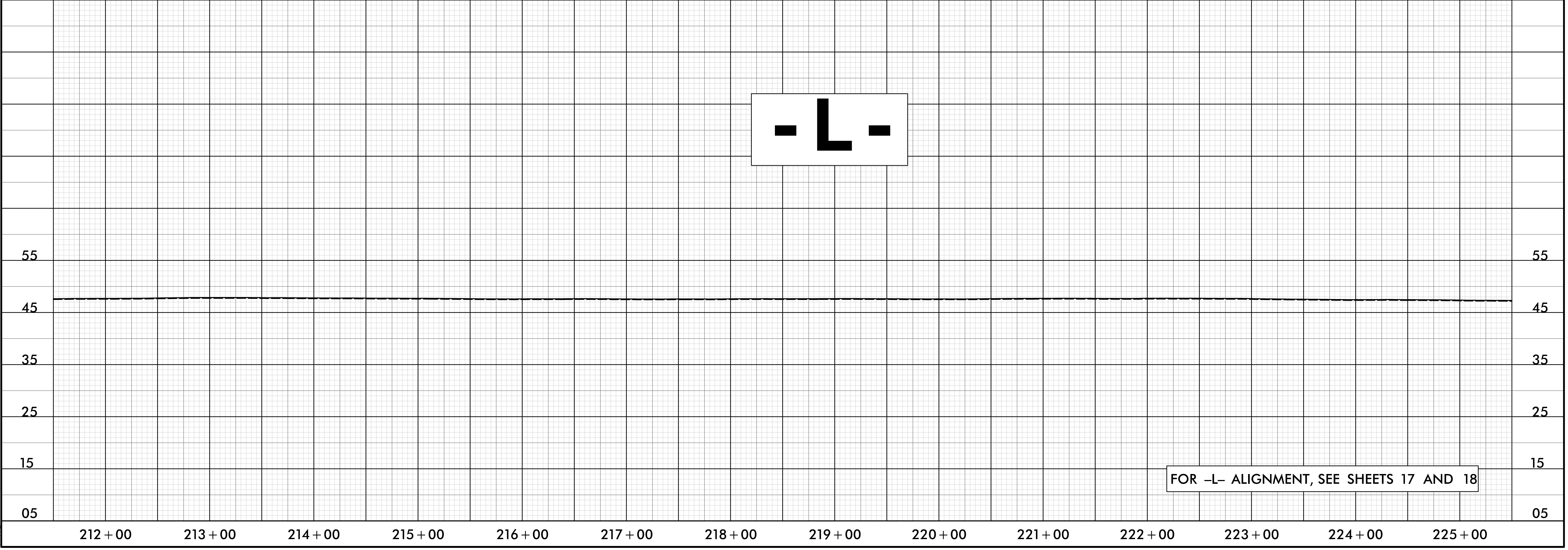
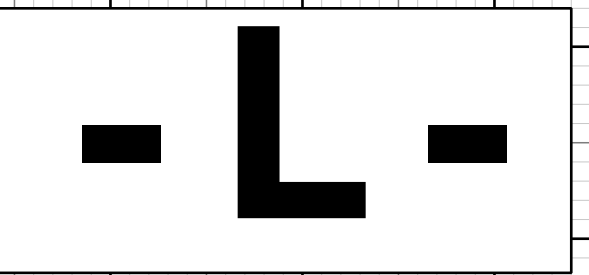
PIPE HYDRAULIC DATA
 -L- Sta.200+80 (STR #1601)

DRAINAGE AREA	= 171	AC
DESIGN FREQUENCY	= 25	YRS
DESIGN DISCHARGE	= 170	CFS
DESIGN HW ELEVATION	= 38.5	FT
100 YEAR DISCHARGE	= 240	CFS
100 YEAR HW ELEVATION	= 40.9	FT
OVERTOPPING FREQUENCY	= 25	YRS
OVERTOPPING DISCHARGE	= > 170	CFS
OVERTOPPING ELEVATION	= 40.3	FT



FOR -L- ALIGNMENT, SEE SHEETS 16 AND 17

15-JUN-2021 13:23
N:\Roadway\Pro\14906_rdy_pf1_psh33.dgn
HNTB



FOR -L- ALIGNMENT, SEE SHEETS 17 AND 18