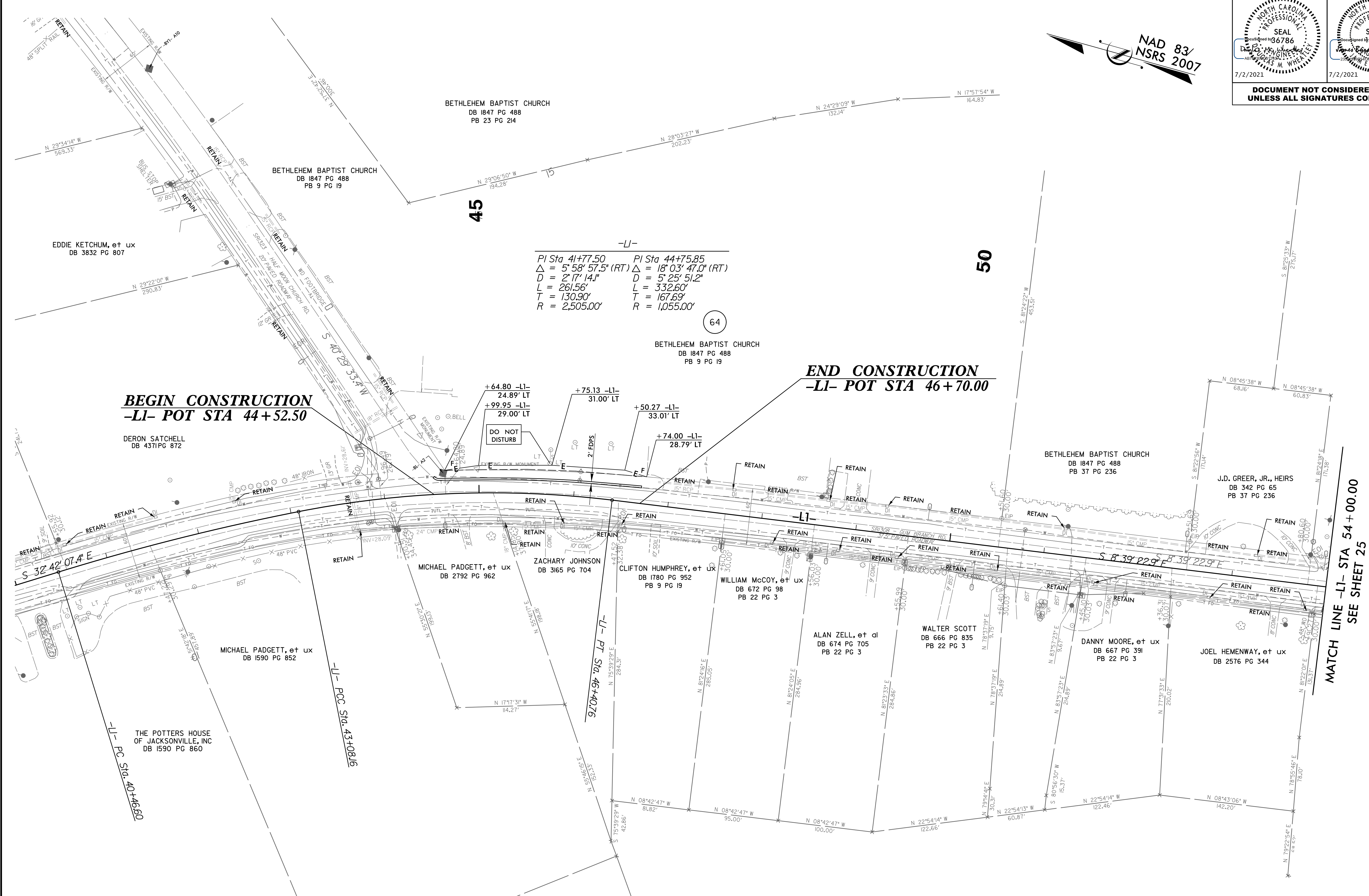
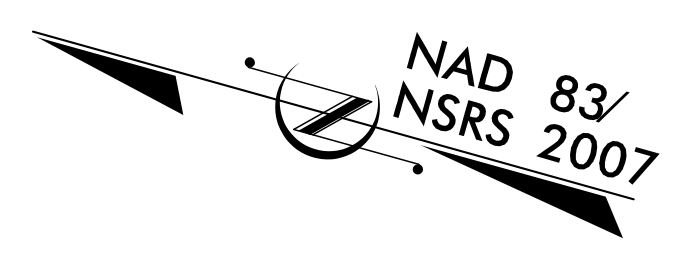


8.17/99

PROJECT REFERENCE NO. U-4906		SHEET NO. 24
RW SHEET NO.		
ROADWAY DESIGN ENGINEER	HYDRAULICS ENGINEER	
DOCUMENT NOT CONSIDERED FINAL UNLESS ALL SIGNATURES COMPLETED		



-LI-

PI Sta 41+77.50 Δ = 5° 58' 57.5" (RT) D = 2' 17" 14.1" L = 261.56' T = 130.90' R = 2,505.00'	PI Sta 44+75.85 Δ = 18° 03' 47.0" (RT) D = 5' 25" 51.2" L = 332.60' T = 167.69' R = 1,055.00'
---	--

64

BEGIN CONSTRUCTION
-LI- POT STA 44+52.50

END CONSTRUCTION
-LI- POT STA 46+70.00

MATCH LINE -LI- STA 54+00.00
SEE SHEET 25

DESIGN EXCEPTION REQUESTED FOR LANE WIDTHS (11') AND USABLE SHOULDER (4' MINIMUM)

FOR -LI- PROFILE, SEE SHEET 36

15-JUN-2021 13:23
\\regdwed\p\proj\4906_r\dj_psh24.dgn
HNTB