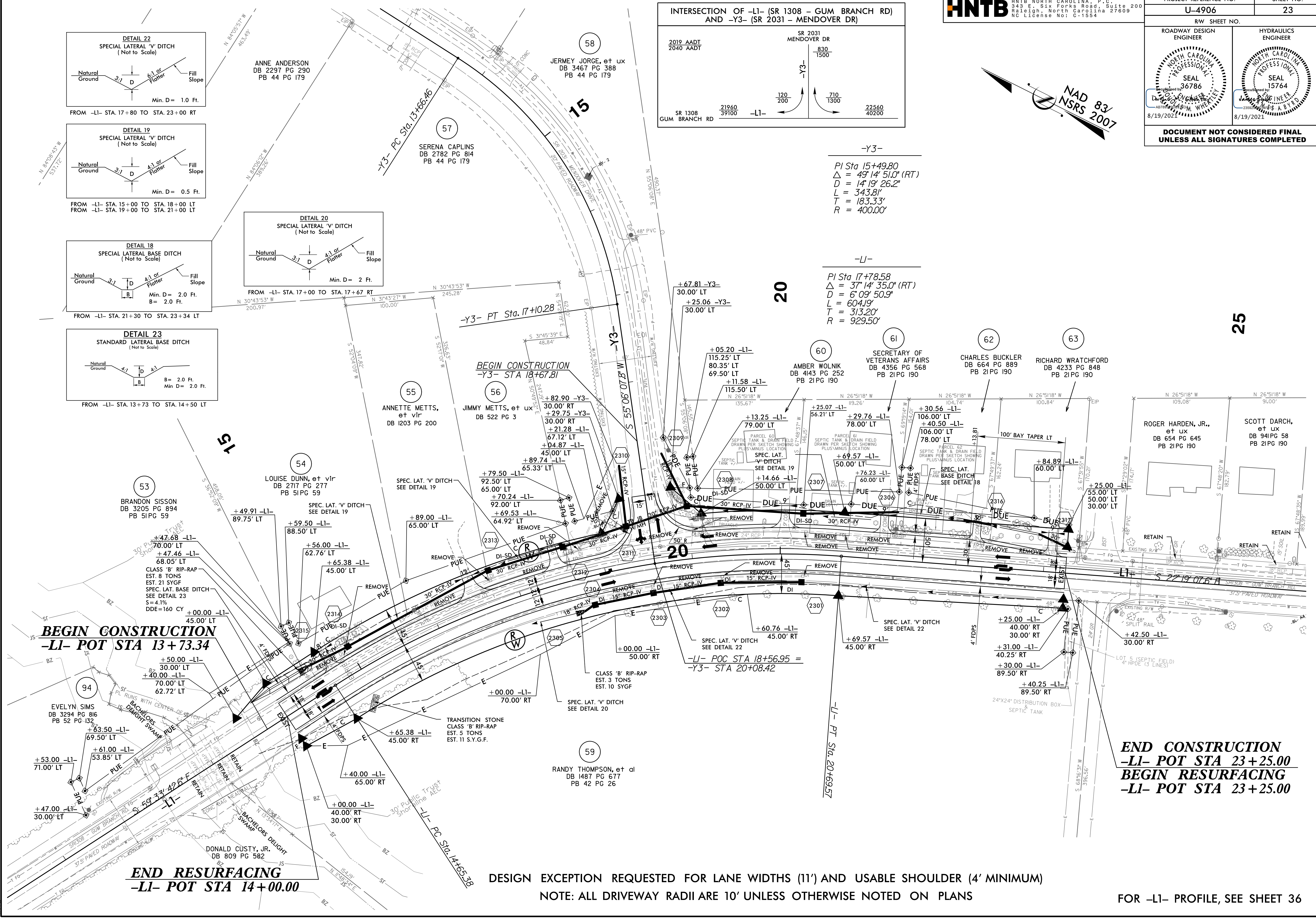
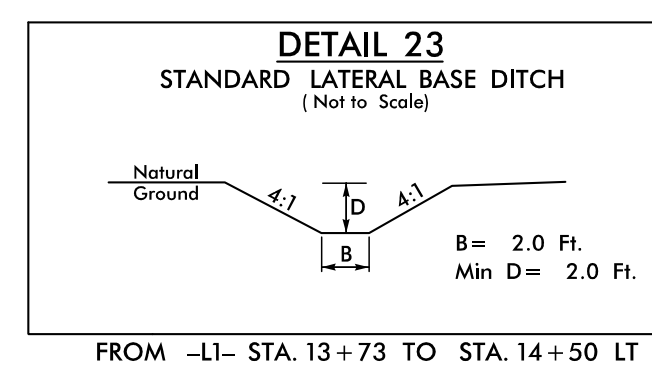
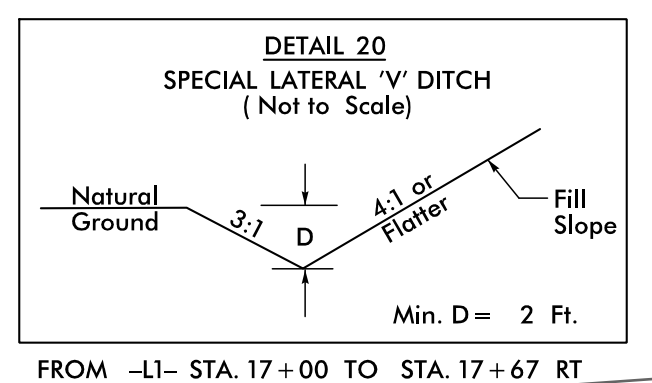
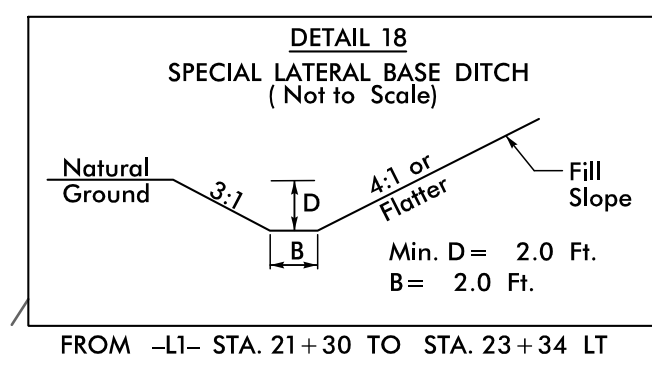
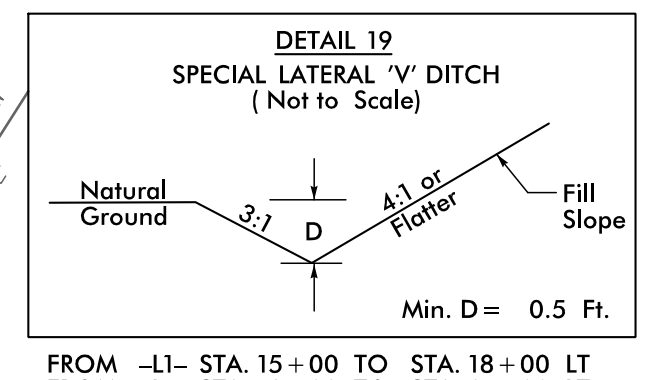
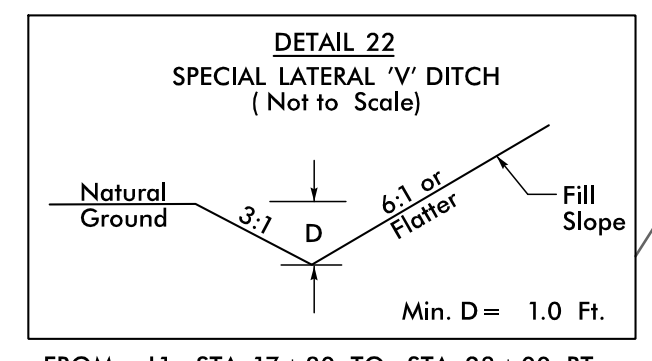
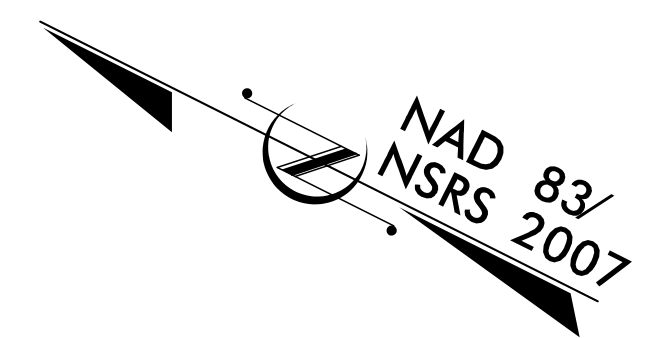
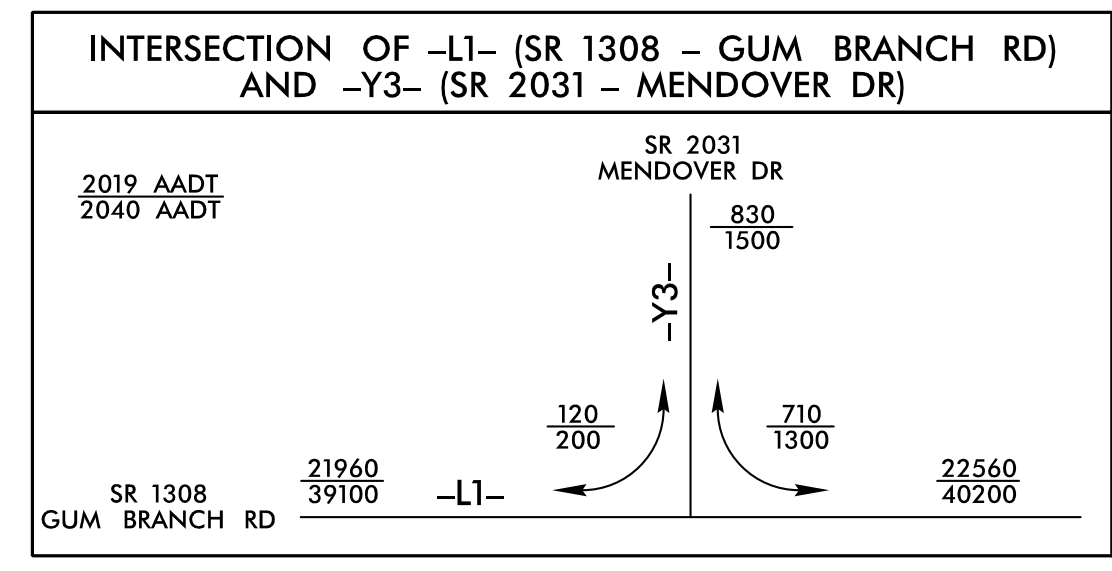


5/14/2018
18-AUG-2021 13:35
\\regdev\proj\144906_rdlj_psh23.dgn

PROJECT REFERENCE NO. U-4906	SHEET NO. 23
RW SHEET NO.	
ROADWAY DESIGN ENGINEER	HYDRAULICS ENGINEER
DOCUMENT NOT CONSIDERED FINAL UNLESS ALL SIGNATURES COMPLETED	



DESIGN EXCEPTION REQUESTED FOR LANE WIDTHS (11') AND USABLE SHOULDER (4' MINIMUM)
NOTE: ALL DRIVEWAY RADII ARE 10' UNLESS OTHERWISE NOTED ON PLANS

FOR -L1- PROFILE, SEE SHEET 36