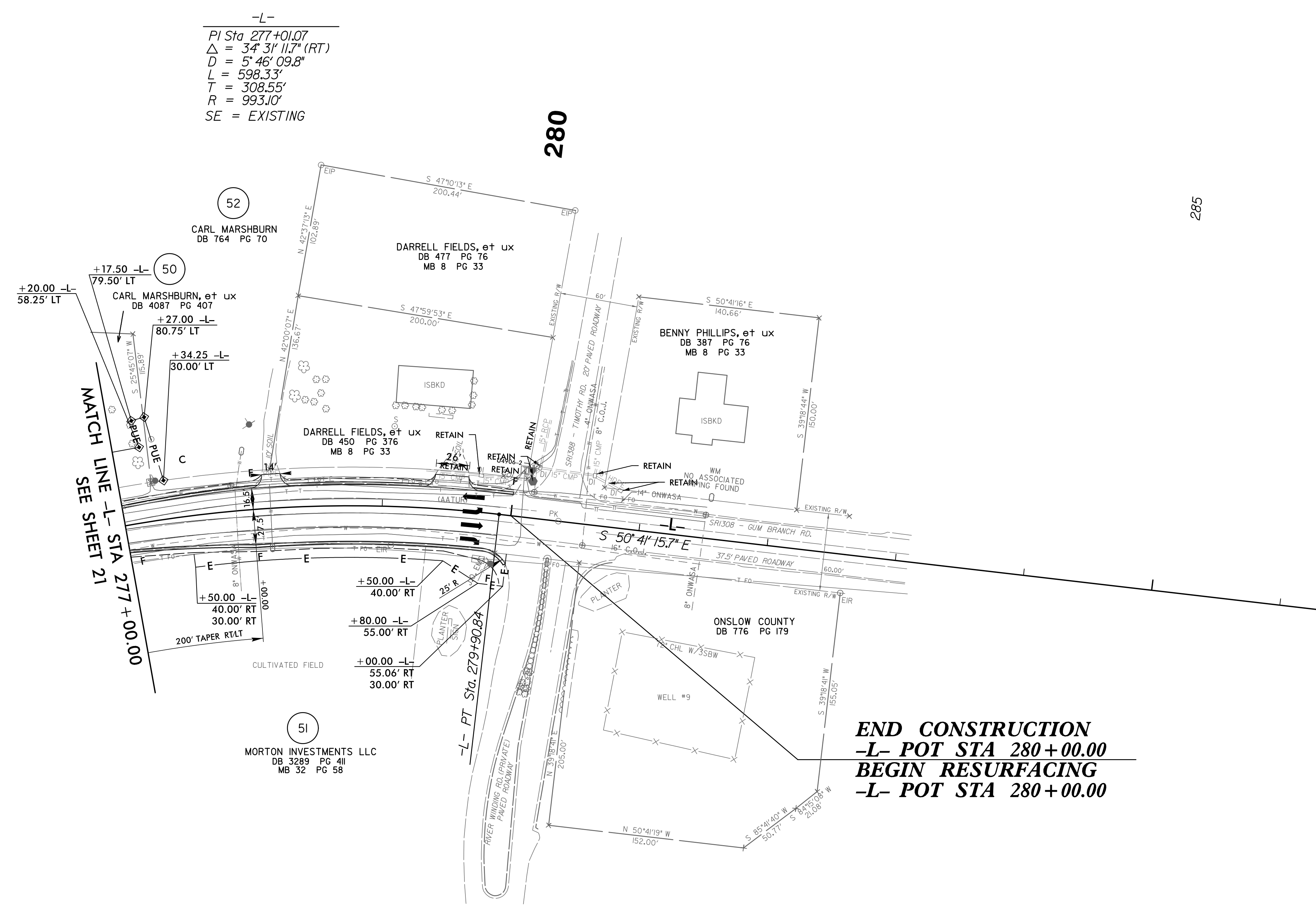
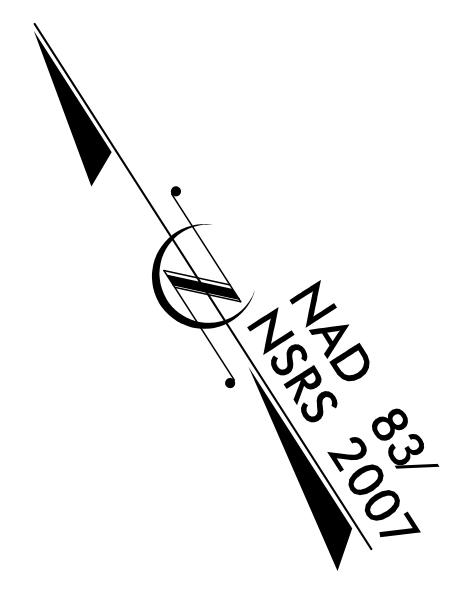


8/17/99

PROJECT REFERENCE NO. U-4906	SHEET NO. 22
RW SHEET NO.	
ROADWAY DESIGN ENGINEER	HYDRAULICS ENGINEER
DOCUMENT NOT CONSIDERED FINAL UNLESS ALL SIGNATURES COMPLETED	



-L-
 PI Sta 277+01.07
 $\Delta = 34' 31'' 11.7''$ (RT)
 $D = 5' 46'' 09.8''$
 $L = 598.33'$
 $T = 308.55'$
 $R = 993.10'$
 SE = EXISTING

DESIGN EXCEPTION REQUESTED FOR LANE WIDTHS (11') AND USABLE SHOULDER (4' MINIMUM)

NOTE: ALL DRIVEWAY RADII ARE 10' UNLESS OTHERWISE NOTED ON PLANS

FOR -L- PROFILE, SEE SHEET 15

15-JUN-2021 13:23
 \\regdway\p\proj\4906_r\dj_psh22.dgn
 DJP