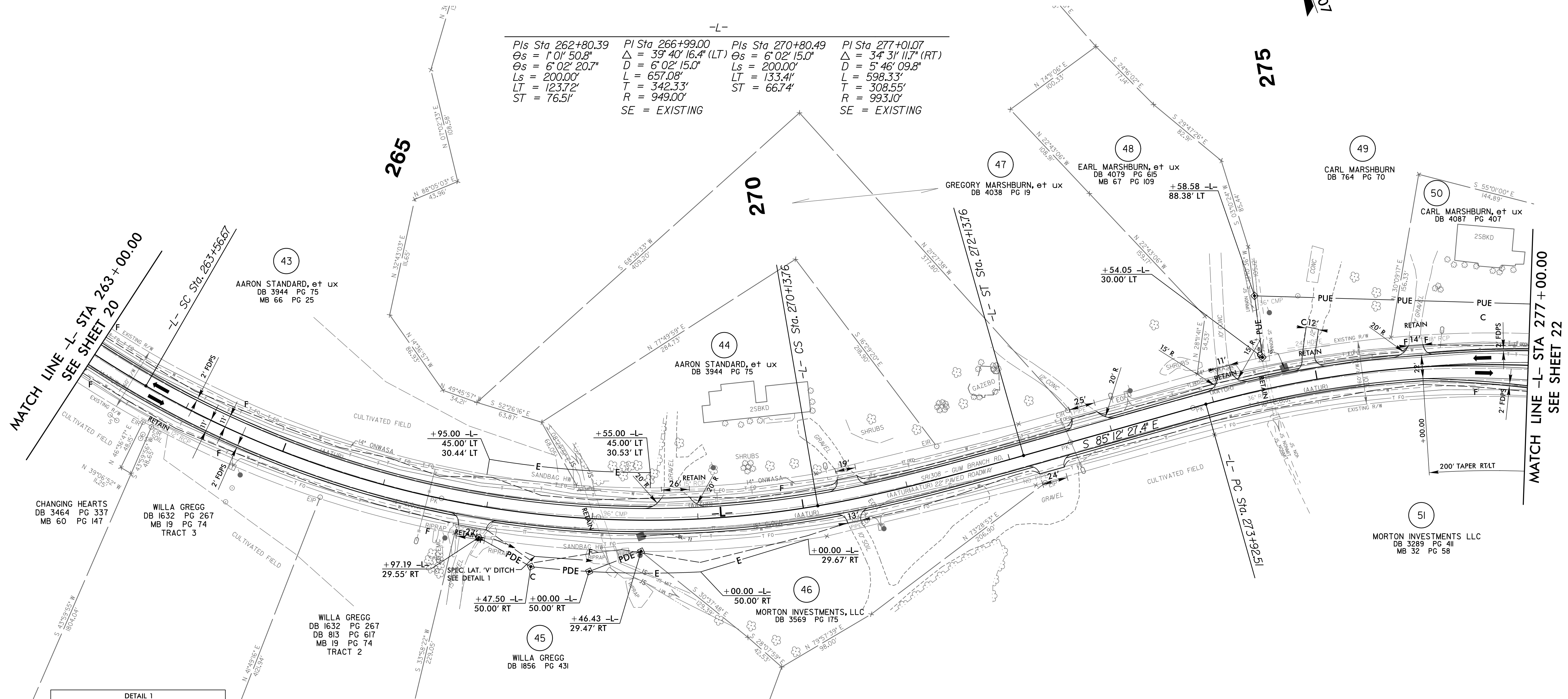
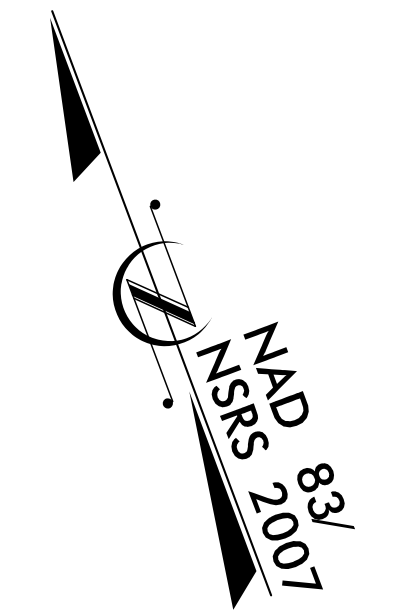


PROJECT REFERENCE NO. U-4906		SHEET NO. 21
RW SHEET NO.		
ROADWAY DESIGN ENGINEER	HYDRAULICS ENGINEER	
DOCUMENT NOT CONSIDERED FINAL UNLESS ALL SIGNATURES COMPLETED		

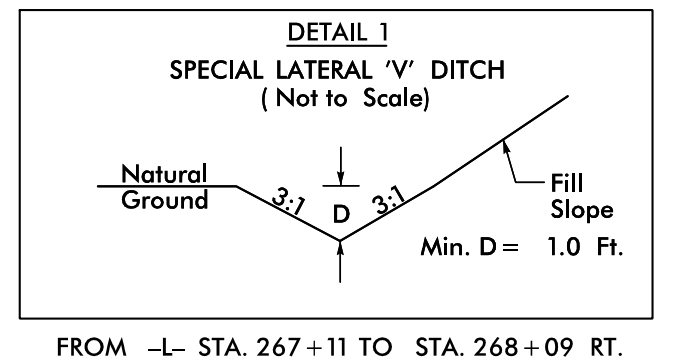


-L-

Pls Sta 262+80.39 θs = 1°01'50.8" θs = 6°02'20.7" Ls = 200.00' LT = 123.72' ST = 76.51'	PI Sta 266+99.00 Δ = 39°40'16.4" (LT) D = 6°02'15.0" L = 657.08' T = 342.33' R = 949.00' SE = EXISTING	Pls Sta 270+80.49 θs = 6°02'15.0" Ls = 200.00' LT = 133.41' ST = 66.74'	PI Sta 277+01.07 Δ = 34°31'11.7" (RT) D = 5°46'09.8" L = 598.33' T = 308.55' R = 993.10' SE = EXISTING
--	--	---	--

MATCH LINE -L- STA 263+00.00
SEE SHEET 20

MATCH LINE -L- STA 277+00.00
SEE SHEET 22



DESIGN EXCEPTION REQUESTED FOR LANE WIDTHS (11') AND USABLE SHOULDER (4' MINIMUM)

NOTE: ALL DRIVEWAY RADII ARE 10' UNLESS OTHERWISE NOTED ON PLANS

FOR -L- PROFILE, SEE SHEET 35