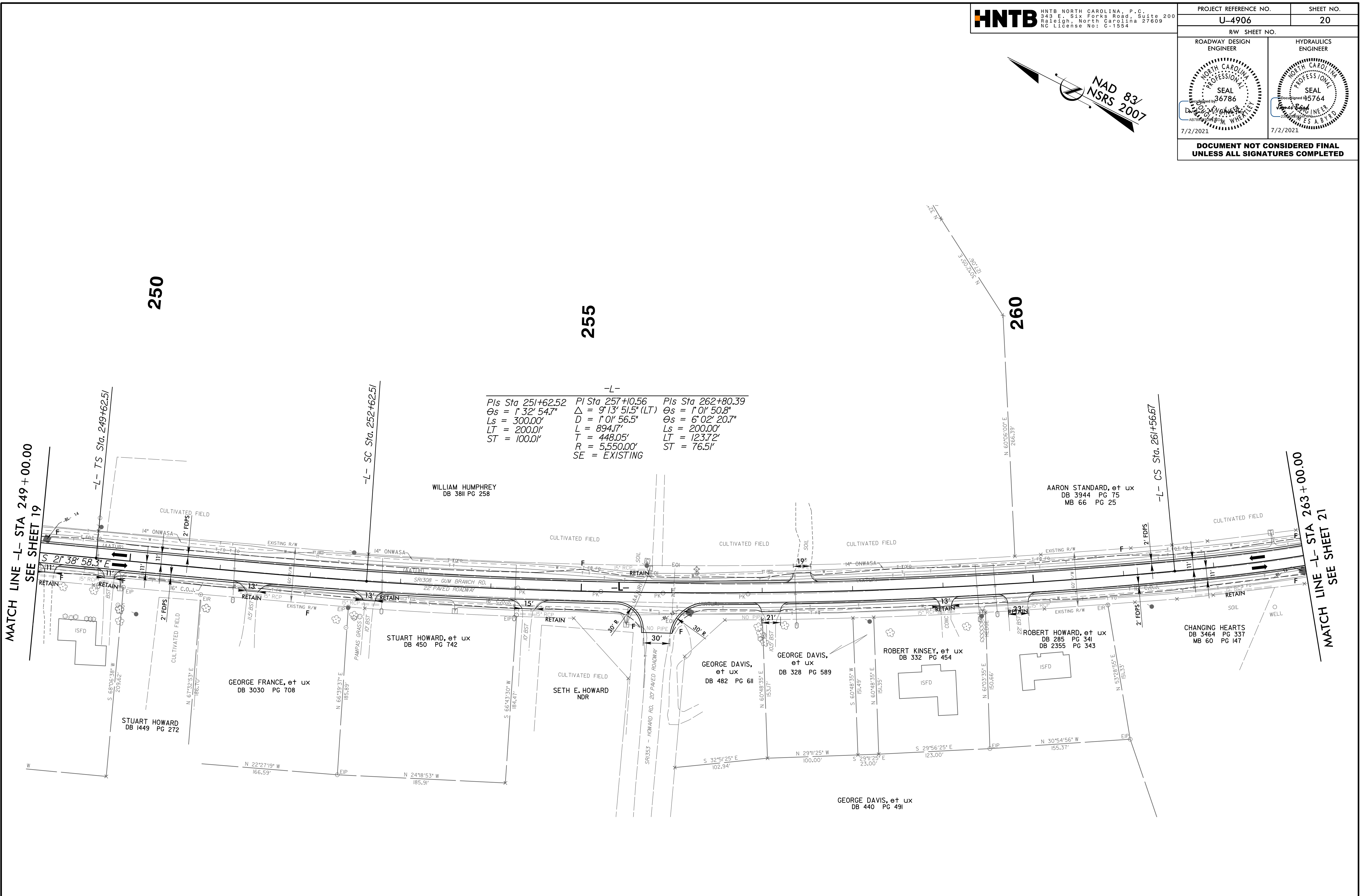
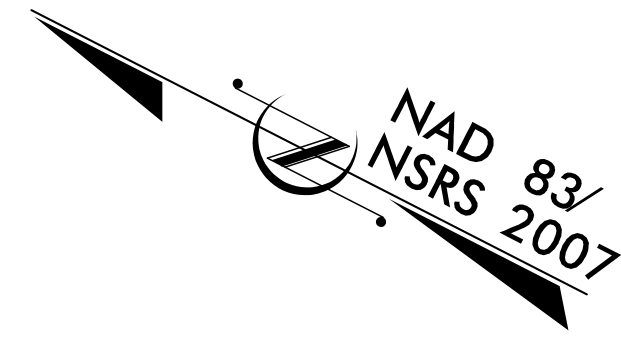


PROJECT REFERENCE NO. U-4906	SHEET NO. 20
RW SHEET NO.	
ROADWAY DESIGN ENGINEER	HYDRAULICS ENGINEER
7/2/2021	7/2/2021
DOCUMENT NOT CONSIDERED FINAL UNLESS ALL SIGNATURES COMPLETED	



-L-

<i>PIs Sta 251+62.52</i>	<i>PI Sta 257+10.56</i>	<i>PIs Sta 262+80.39</i>
<i>θs = 1° 32' 54.7"</i>	<i>Δ = 9° 13' 51.5" (LT)</i>	<i>θs = 1° 01' 50.8"</i>
<i>Ls = 300.00'</i>	<i>D = 1° 01' 56.5"</i>	<i>θs = 6° 02' 20.7"</i>
<i>LT = 200.01'</i>	<i>L = 894.17'</i>	<i>Ls = 200.00'</i>
<i>ST = 100.01'</i>	<i>T = 448.05'</i>	<i>LT = 123.72'</i>
	<i>R = 5,550.00'</i>	<i>ST = 76.51'</i>
	<i>SE = EXISTING</i>	

DESIGN EXCEPTION REQUESTED FOR LANE WIDTHS (11') AND USABLE SHOULDER (4' MINIMUM)
 NOTE: ALL DRIVEWAY RADII ARE 10' UNLESS OTHERWISE NOTED ON PLANS

FOR -L- PROFILE, SEE SHEETS 34 AND 35